

## POSH COMMANDER



**16,000 BHP / 202.69 TBP / DP2 / AHTS Call Sign: 9V3970**

**Class Notation** ABS +A1, Towing Vessel, Fire Fighting Vessel Class 1, Offshore Support Vessel AH, (E) +AMS, +ACCU, +DPS-2

### Principal Particulars

Flag	Singapore
Year Built	2011
Place Built	USC Keihin Shipyard, Yokohama, Japan
Design Draft	6.00 m
Max Summer Draft	6.60 m
Gross Tonnage	3,261.0 T
Net Tonnage	978.0 T
Deadweight (Max Draft)	3,186.0 T @ 6.60 m draft
Displacement	6,080.0 T
IMO No.	9514286
Design	USC 180T BP AHTS No. 0057

### Dimensions

Length Overall	75.27 m
Beam Overall	18.00 m
Depth Moulded	8.10 m

### Performance

Max Speed	12.00 kts
Economical Speed	10.00 kts

\* Subject to actual weather and operating conditions

### Cargo Deck

Deck Cargo Area	516.0 m <sup>2</sup>
Deck Cargo Dimension	34.4 m x 15.0 m
Deck Cargo Capacity	1,000.0 T
Deck Strength	10.0 T/m <sup>2</sup> (Aft to Fr.16); 5.0 T/m <sup>2</sup> (Fr.16 - Fr.51)
Reefer Points	8 (4 x 440v, 4 x 220v)

### Capacities

Fuel Tank	1542 m <sup>3</sup>
Fresh Water	590.9 m <sup>3</sup>
Drill Water *	705.8 m <sup>3</sup>
Ballast Water *	705.8 m <sup>3</sup>
Dry Bulk Tank	250.0 m <sup>3</sup> (in 4 tanks)
Endurance	~32 days @ 75% ME Load

### Discharging Rates

Fresh Water/Pump	1 x 200 m <sup>3</sup> /hr@90 m head
Fuel/Pump	1 x 150 m <sup>3</sup> /hr@90 m head

### Accommodation

1 - Berth Cabins	14
2 - Berth Cabins	6
4 - Berth Cabins	1
Total (POB)	30

### Deck Crane

Fixed Crane	SWL 5.0 T @ 14.0 m radius (TTS)
Movable Crane	SWL 4.5 T @ 13.0 m radius (Triplex)

### Dynamic Positioning System

DP Class	DP 2, Converteam ADP21 - Independent Joystick
References	2 x DGPS + 1 x Cyscan + 1 x Mini Rada-Scan
VRU	2

### Main Engines & Generators

Main Engines	Wartsila / 12V32, 2 x 8,000 BHP each
Shaft Generators	AVK (Wartsila), 2 x 2,240 kW each
Diesel Generators	Caterpillar C18 / SR4, 2 x 500 kW each
Emergency Generators	Caterpillar C4.4 / LSA 44.2 S7, 1 x 72 kW each

### Thrusters & Propulsion

Bow Thruster	Kawasaki 2 x Tunnel Thruster @ 800 kW (12.0 T)
Stern Thruster	Kawasaki 1 x Tunnel Thruster @ 800 kW (12.0 T)
Propellers	Wartsila, 4 Bladed, 2 x CP Propellers in fixed nozzles
Rudders	Rolls Royce 2 x independent high lift flap type

### Anchor Handling/Tow Equipment

Tow/Anchor Handling Winch	Rolls-Royce/Reverse Waterfall/1 x SL350W/BSL350W
Stall Pull Capacity	350.0 T
Brake Holding Capacity	450.0 T @ 1st layer of rope on the drum
Tow Drum Capacity	2,500.0 m x 77.0 mm dia wire
Anchor Handling Capacity	2,500.0 m x 77.0 mm dia wire
Secondary Winch Capacity	NIL
Storage Reel Capacity	2 x 1,500.0 m x 77.0 mm dia wire
Tugger Winch	Rolls-Royce 2 x 17.0 T each
Capstan	2 x 10.0 T each
Shark Jaws	2 x Triplex H-500 (SWL 500.0 T)
Tow Pins	2 x Triplex S-200 (SWL 200.0 T vertical)
Stern Roller	5.0 m x 3.0 m dia (SWL 500.0 T)
Gypsies	2 x 76.0 mm + 2 x 84.0 mm + 1 x 90.0 mm
Chain Locker	2 x 102 m <sup>3</sup>

### Tow/Anchor Handling Wires

Main Tow Wire	1,500.0 m x 76.0 mm dia wire
Spare Tow Wire	1,500.0 m x 76.0 mm dia wire
Anchor Handling Wire	1,500.0 m x 76.0 mm dia wire

### Mooring Equipment

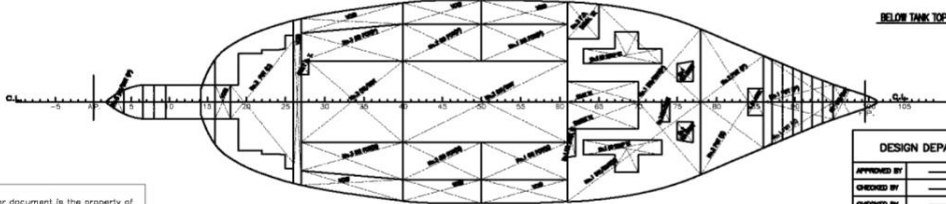
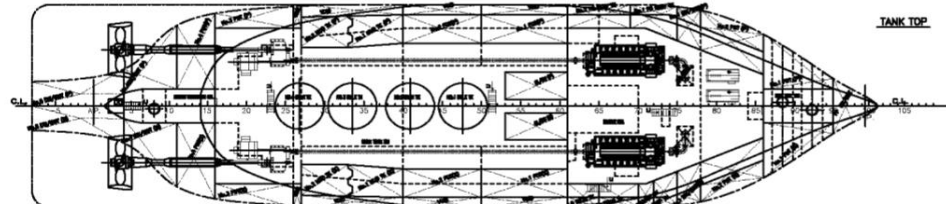
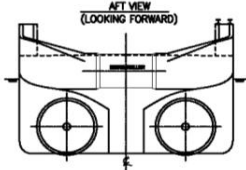
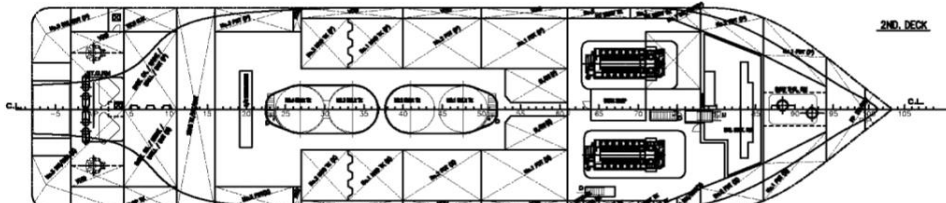
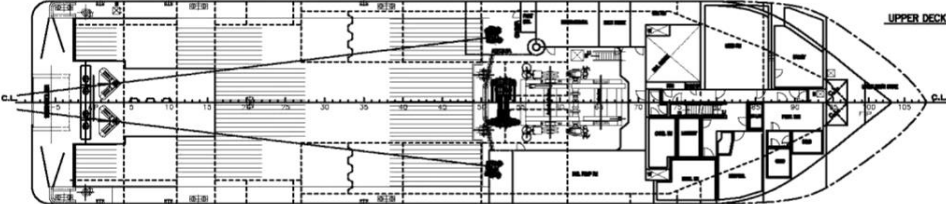
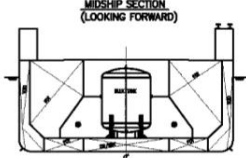
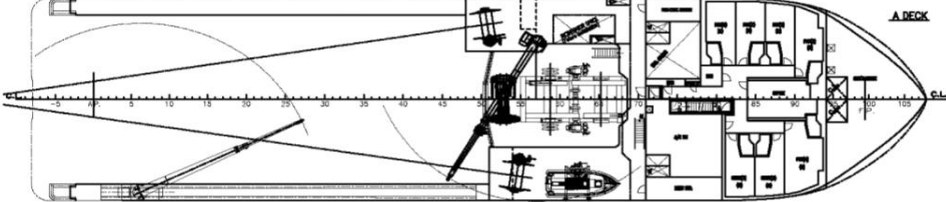
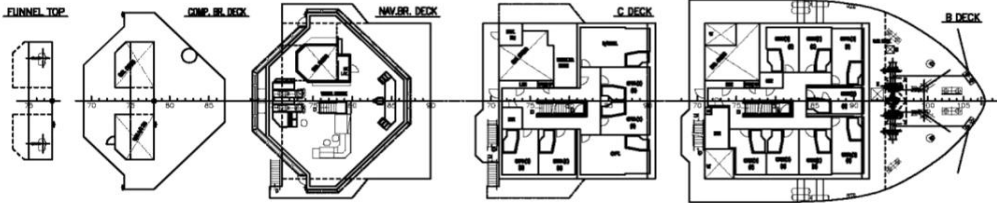
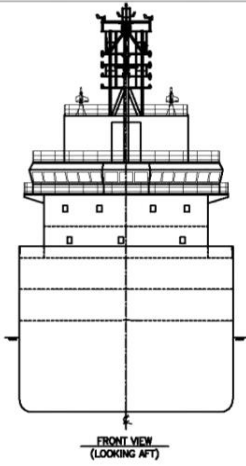
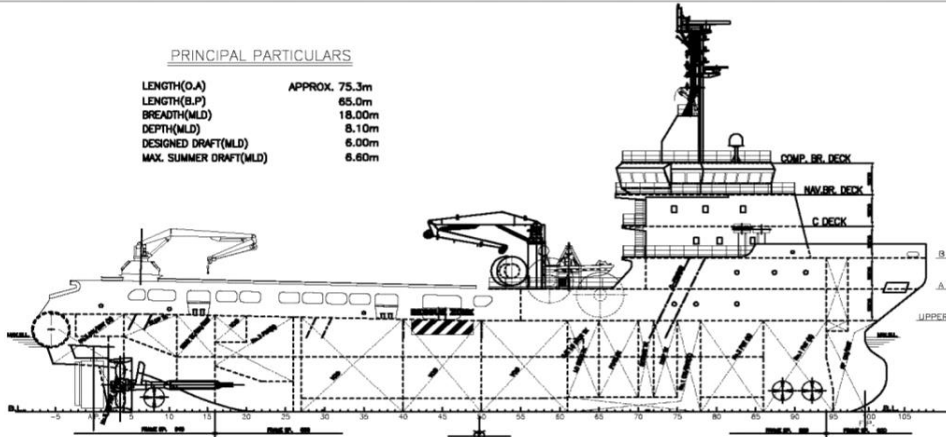
Anchor	2 x HHP Stockless Anchor, 2,138 kg
Anchor Chain	2 x 495.0 m x 46.0 mm dia
Anchor Windlass	15 T @ 12 m/min

### Fire Fighting and Rescue

Firefighting System	FiFi 1
FiFi Pump	2 x 1,762 m <sup>3</sup> /hr
FiFi Monitors	2 x 1,200 m <sup>3</sup> /hr
Spray Booms	2 x 6.0 m/Fixed nozzle
Dispersant Capacity	12.19 m <sup>3</sup>
Foam Capacity	23.53 m <sup>3</sup>
Rescue Boat	1 x 15 man/water-jet/144 hp
Life Rafts	6 x 16 man
Life Buoys	10
Life Jackets	42
Fixed H2S Detection System	Yes

**PRINCIPAL PARTICULARS**

LENGTH(O.A)            APPROX. 75.3m  
 LENGTH(B.P)            65.0m  
 BREADTH(MLD)          18.00m  
 DEPTH(MLD)            8.10m  
 DESIGNED DRAFT(MLD)    6.00m  
 MAX. SUMMER DRAFT(MLD) 6.80m



This drawing or document is the property of Universal Shipbuilding Corp. and must in no case wholly or partially be copied, shown or given to a third party without the expressed consent of Universal Shipbuilding Corp.

DESIGN DEPARTMENT	PLAN No.	180T BP AHTS
APPROVED BY	SNo.0056/57	
CHECKED BY		
DESIGNED BY		
DRAWN BY		
DATE OF SCALE	June 18, 2009	
1/200	Universal Shipbuilding Corporation	DWG. No. 4011100-10
		REV. 1

**GENERAL ARRANGEMENT**