

PW L 801



Floating Sheerleg 800T Lift Capacity

Principal Particulars:

Classification	: Korean Register of Shipping
Flag	: Singapore
Port of Registry	: Singapore
Year Built	: 2007
Length Overall	: 75.0 m
Beam Overall	: 32.0 m
Depth Moulded	: 5.00 m
Max Draught	: 3.50 m

Capacities:

Gross Tonnage	: 4,350 tons
Nett Tonnage	: 1,305 tons
Fuel Tank	: 322 m ³
Fresh Water	: 624 m ³
Quarters	: 20 persons

Anchoring & Mooring Equipment:

Anchor Windlass	: 2 sets
Capacity	: 15 metric tons x 10 m/min (1 Gypsy wheel, 1 wire drum)
Anchor (stockless)	: 3.78 metric tons / 1 set, 4.05 tons / 1 set
Anchor chain	: 56 mm Dia / 412.5 m
Anchor wire	: 34 mm Dia / 500.0 m

Fwd Anchor winch	: 2 sets
Capacity	: 15 metric tons x 15m/min
Anchor (stockless)	: 4.05 metric tons / 2 sets
Anchor chain	: 62mm Dia / 30 m with wire rope 34 mm Dia x 500 m – 2 sets

Aft Anchor winch	: 2 sets
Capacity	: 20 metric tons x 15m/min
Anchor (stockless)	: 4.89 metric tons / 2 sets
Anchor chain	: 62mm Dia / 30 m with wire rope 34 mm Dia x 500 m – 2 sets

Mooring Winch (Outside)	: 2 sets
Pulling Capacity	: 20 metric tons x 15m/min
Wire Rope	: 38mm Dia x 500m – 2 rolls

Mooring Winch (Inside)	: 2 sets
Pulling Capacity	: 20 metric tons x 15m/min
Wire Rope	: 38mm Dia x 500m – 2 rolls

Sheerlegs:

Boom Length	: 87 m
Max Lifting Capacity	: 800 metric tons
Main Hook	: 2 x 400 metric tons at Boom Angle 60°
Auxiliary Hook	: 1 x 300 metric tons at Boom Angle 50°
Whip	: 2 x 15 metric tons
Lifting Height of Main Hook	: 79.5 M at Boom Angle 60°

Main Hoisting Winches	: 2 Wire Drums
Line Pull	: 25 /12.5 metric tons x 15/30 m/min
Wire Size / Length	: 2 sets x 42 mm Dia / 2,300 m

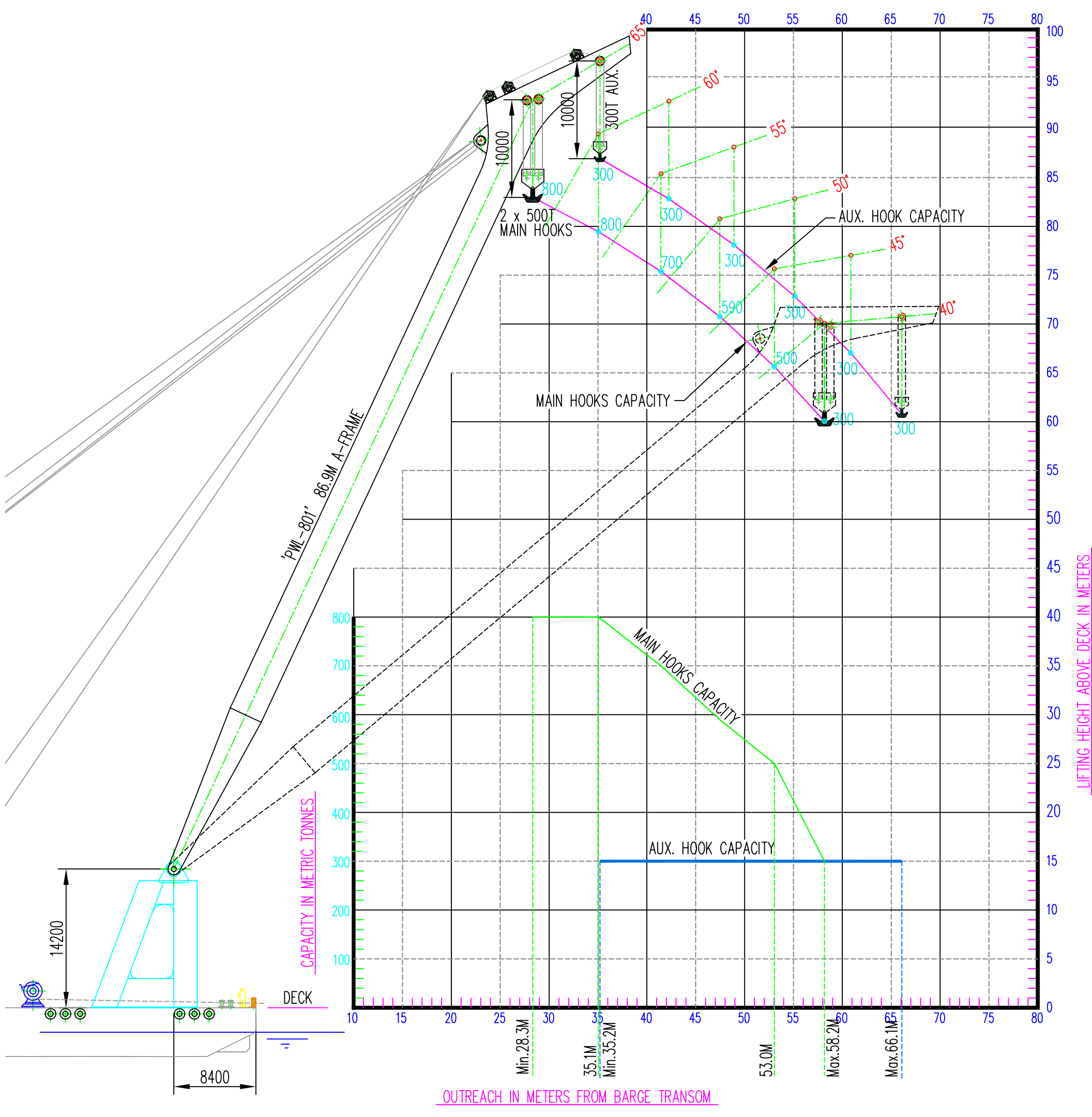
Auxiliary Hoisting winches	: 2 Wire Drums
Line Pull	: 25 /12.5 metric tons x 15/30 m/min
Wire Size / Length	: 1 set x 42 mm Dia / 1,800 m

Topping Winch	: 2 sets
Line Pull	: 45.0 metric tons x 15 m/min
Brake Capacity	: 152.6 M/T
Wire Size / Length	: 2 x 50 mm Dia 2,300 m

Deck Crane	
Type	: SC736 (Susan Industry)
Capacity	: 6 tons x 2.6m (1 set)

Auxiliary Equipment

Generator	
Capacity	: 2 x 104Kw (AC 445 x 130KVA, 60Hz)
Type	: PNK – Brushless / Self Exciting
Aux Engine (Diesel) x 2 sets	: 1 x 16 Kw (AC 225V, 3PH, 60Hz)
Capacity	: 170 PS x 1,800 rpm
Type	: ADT 136T / 4 cycle



CAPACITY DIAGRAM 'PWL-801'
SCALE 1:400

'PWL-801' Lifting Capacity Table

Boom Angle	2 x Main Hooks			1 x Main Hook	Aux. Hook		
	Capacity (MT)	Outreach (m)	Hook Height (m)	Capacity (MT)	Capacity (MT)	Outreach (m)	Hook Height (m)
65.0	800.0	28.3	83.0	400.0	300.0	35.2	86.9
64.5	800.0	29.0	82.6	400.0	300.0	35.9	86.5
64.0	800.0	29.7	82.3	400.0	300.0	36.6	86.2
63.5	800.0	30.4	82.0	400.0	300.0	37.4	85.8
63.0	800.0	31.1	81.6	400.0	300.0	38.1	85.4
62.5	800.0	31.7	81.3	400.0	300.0	38.8	84.9
62.0	800.0	32.4	80.9	400.0	300.0	39.5	84.5
61.5	800.0	33.1	80.6	400.0	300.0	40.2	84.1
61.0	800.0	33.7	80.2	400.0	300.0	40.9	83.7
60.5	800.0	34.4	79.8	400.0	300.0	41.6	83.3
60.0	800.0	35.1	79.5	400.0	300.0	42.2	82.8
59.5	789.8	35.7	79.1	400.0	300.0	42.9	82.4
59.0	779.6	36.4	78.7	400.0	300.0	43.6	81.9
58.5	769.4	37.0	78.3	400.0	300.0	44.3	81.5
58.0	759.3	37.6	77.9	400.0	300.0	45.0	81.0
57.5	749.3	38.3	77.5	400.0	300.0	45.6	80.5
57.0	739.3	38.9	77.1	400.0	300.0	46.3	80.1
56.5	729.4	39.6	76.7	400.0	300.0	47.0	79.6
56.0	719.5	40.2	76.2	400.0	300.0	47.6	79.1
55.5	709.7	40.8	75.8	400.0	300.0	48.3	78.6
55.0	700.0	41.4	75.4	400.0	300.0	48.9	78.1
54.5	688.7	42.1	74.9	400.0	300.0	49.6	77.6
54.0	677.4	42.7	74.5	400.0	300.0	50.2	77.1
53.5	666.2	43.3	74.1	400.0	300.0	50.8	76.6
53.0	655.1	43.9	73.6	400.0	300.0	51.5	76.1
52.5	644.1	44.5	73.1	400.0	300.0	52.1	75.5
52.0	633.1	45.1	72.7	400.0	300.0	52.7	75.0
51.5	622.2	45.7	72.2	400.0	300.0	53.3	74.5
51.0	611.4	46.3	71.7	400.0	300.0	53.9	73.9
50.5	600.7	46.9	71.3	400.0	300.0	54.5	73.4
50.0	590.0	47.5	70.8	400.0	300.0	55.1	72.8
49.5	580.7	48.0	70.3	400.0	300.0	55.7	72.3
49.0	571.4	48.6	69.8	400.0	300.0	56.3	71.7
48.5	562.2	49.2	69.3	400.0	300.0	56.9	71.1
48.0	553.1	49.7	68.8	400.0	300.0	57.5	70.6
47.5	544.1	50.3	68.3	400.0	300.0	58.1	70.0
47.0	535.1	50.9	67.8	400.0	300.0	58.6	69.4
46.5	526.2	51.4	67.2	400.0	300.0	59.2	68.8
46.0	517.4	52.0	66.7	400.0	300.0	59.8	68.2
45.5	508.7	52.5	66.2	400.0	300.0	60.3	67.6
45.0	500.0	53.0	65.6	400.0	300.0	60.9	67.0
44.5	479.2	53.6	65.1	400.0	300.0	61.4	66.4
44.0	458.5	54.1	64.6	400.0	300.0	62.0	65.8
43.5	438.0	54.6	64.0	400.0	300.0	62.5	65.2
43.0	417.7	55.2	63.5	400.0	300.0	63.0	64.6
42.5	397.6	55.7	62.9	397.6	300.0	63.5	63.9
42.0	377.7	56.2	62.3	377.7	300.0	64.1	63.3
41.5	358.0	56.7	61.8	358.0	300.0	64.6	62.7
41.0	338.5	57.2	61.2	338.5	300.0	65.1	62.0
40.5	319.1	57.7	60.6	319.1	300.0	65.6	61.4
40.0	300.0	58.2	60.1	300.0	300.0	66.1	60.8