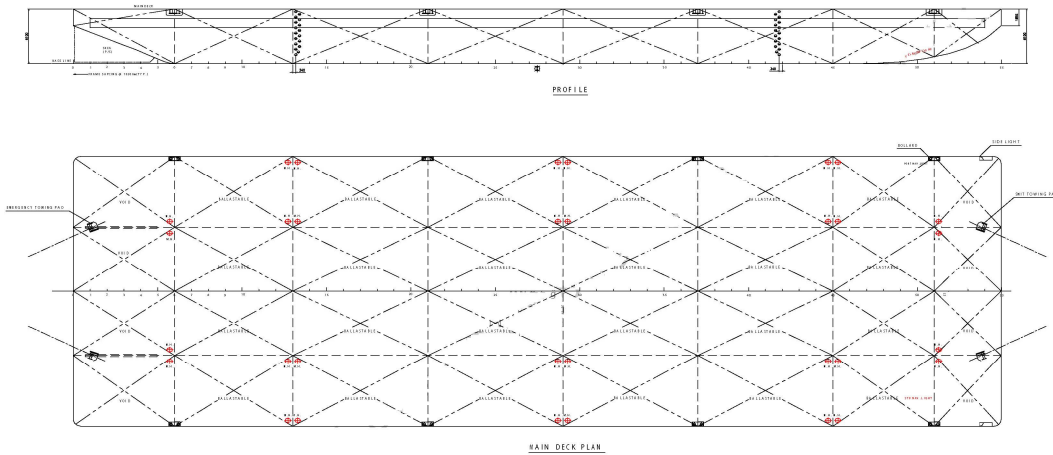



Maritime Courage



330 X 100 X 20 ft / 11,000 (TONS) DWT / DECK/ BALLAST TANK BARGE

Name of Vessel	Maritime Courage
Year Built / Registry	2011 / Singapore
Principal Dimensions	330 x 100 x 20 ft (100.58 x 30.48 x 6.10m)
Classification	ABS  A1 Deck/ Tank Barge
Draft	4.514 m
GRT / NRT	4,951 t / 1,486 t
Deadweight	Approx 11,000 t
Deck Loading	20 t/m ²
Hull Plating Thickness	Deck plating 20 mm, bottom plating 14 mm, side shell plating 14 mm
Bulkheads	3 longitudinal b/h plating thickness 10 mm 7 transverse b/h plating thickness 10 mm
Tanks	32 tanks ballastable through manholes on deck
Outfitting	1 x diesel engine driven steel winch with 1 x 240 ft galvanized wire rope, 1 x 2100 kg stockless anchor, 3 x navigational light stand, 2 x skegs, 8 x mooring bollards, 2 x Smit type towing pads, Suitable no. of tyre fenders tied to eye pads on deck and aluminium anodes
Painting	Internal and External hull are blasted and coated with 2 x Coaltar Epoxy paints. Additional coating of 1 x tropical anti-fouling has been added to the bottom plating. Deck plating is coated with 1 x Coaltar Epoxy paint.