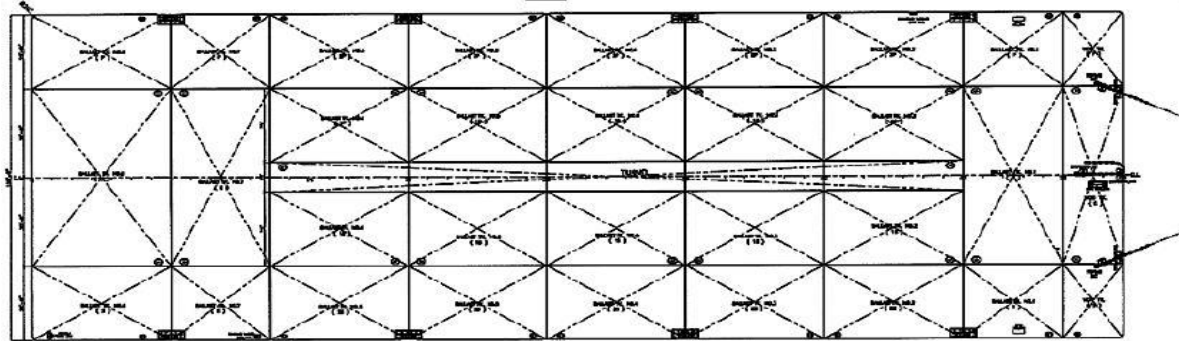
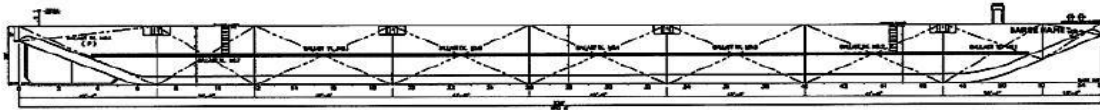


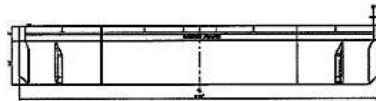
WINPOSH 3301



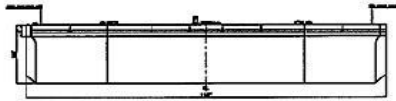
Deck Plan



Profile




Aft View



Fwd View

330 X 110 X 20 ft / 12,200 (TONS) DWT / DECK / BALLAST TANK BARGE

Name of Vessel	WINPOSH 3301
Year Built / Registry	2007 / Indonesia
Principal Dimensions	330 x 110 x 20 ft
Classification	ABS  A1 Deck/ Tank Barge
Draft	4 m
GRT / NRT	5,345 t / 1,603 t
Deadweight	Approx 12,200 t
Deck Loading	20 t/m ²
Hull Plating Thickness	Deck plating 18 mm, bottom plating 12mm, side shell plating 12 mm
Bulkheads	3 longitudinal b/h plating thickness 10 mm 8 transverse b/h plating thickness 10 mm
Tanks	33 tanks ballastable through manholes on deck
Outfitting	1 x 2280 kg anchor with hand winch 6 sets double bitt bollards each Port and Starboard 3 sets towing brackets at bow and 2 sets at stern all fitted with chafing chains 58 heavy duty tyre fenders 33 manholes on deck one for each tank with recess type in cargo area