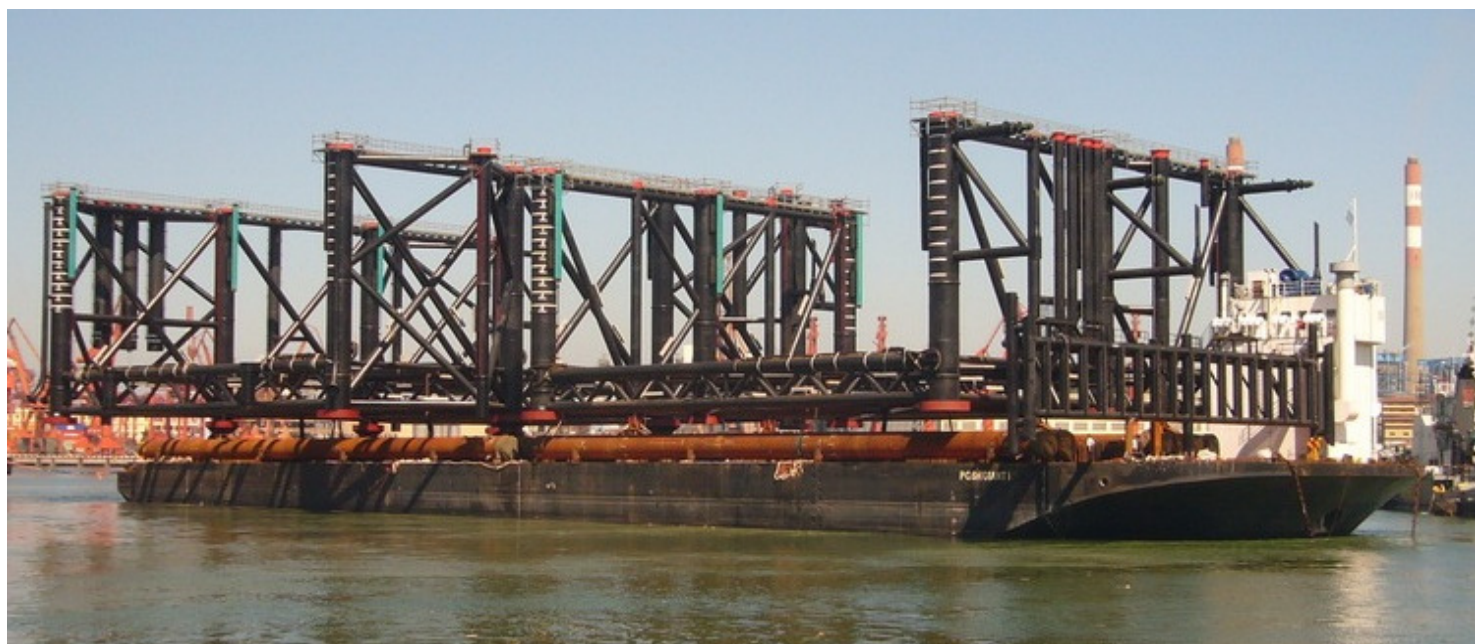


## POSH GIANT I



### 20,000 DWT CLASS HEAVY LIFT SUBMERSIBLE/DECK CARGO BARGE

#### Principal Particulars:

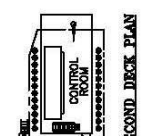
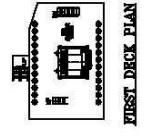
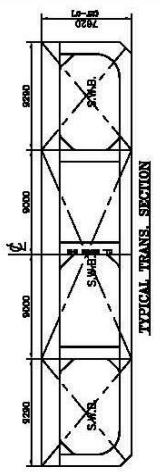
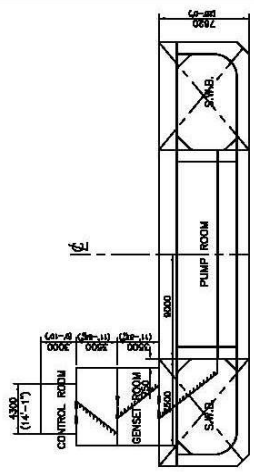
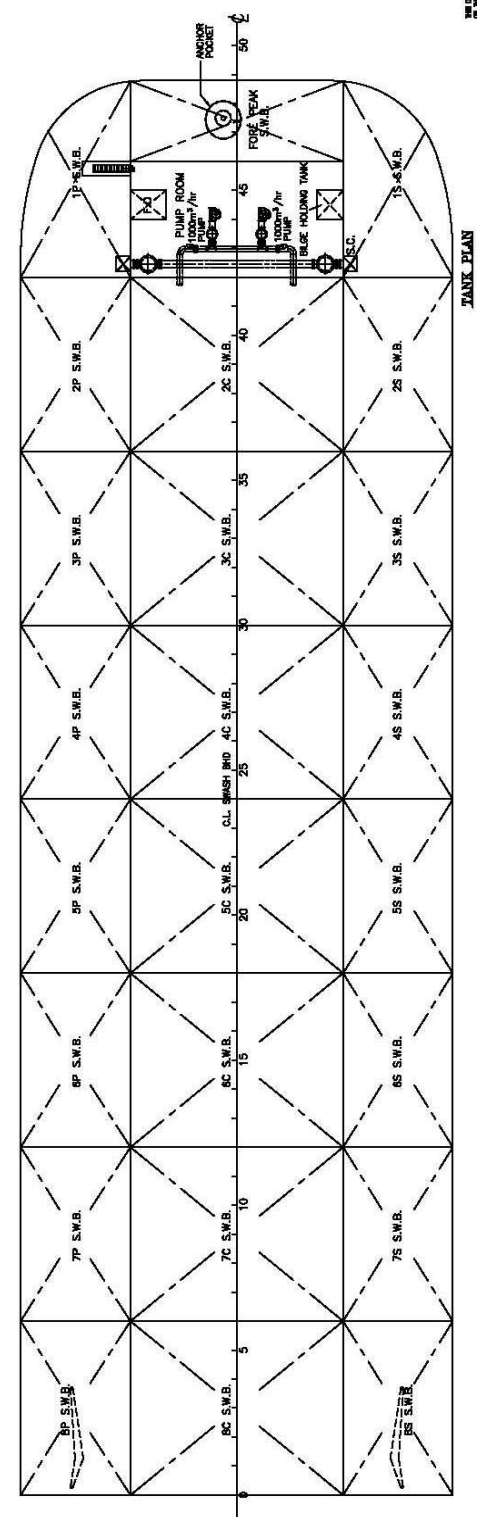
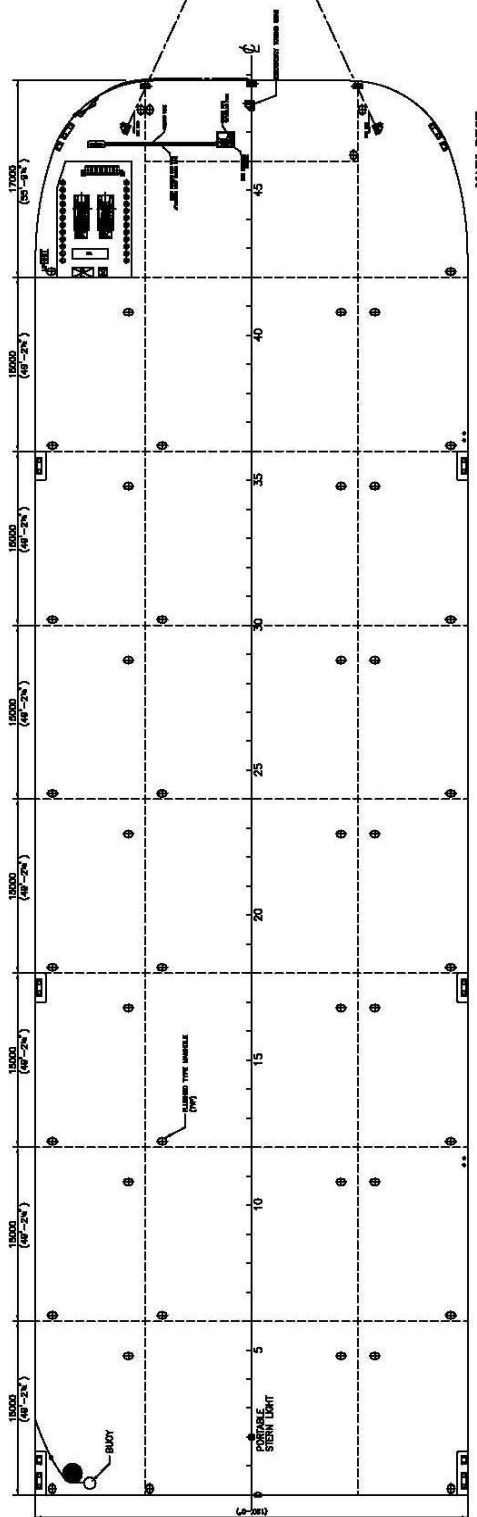
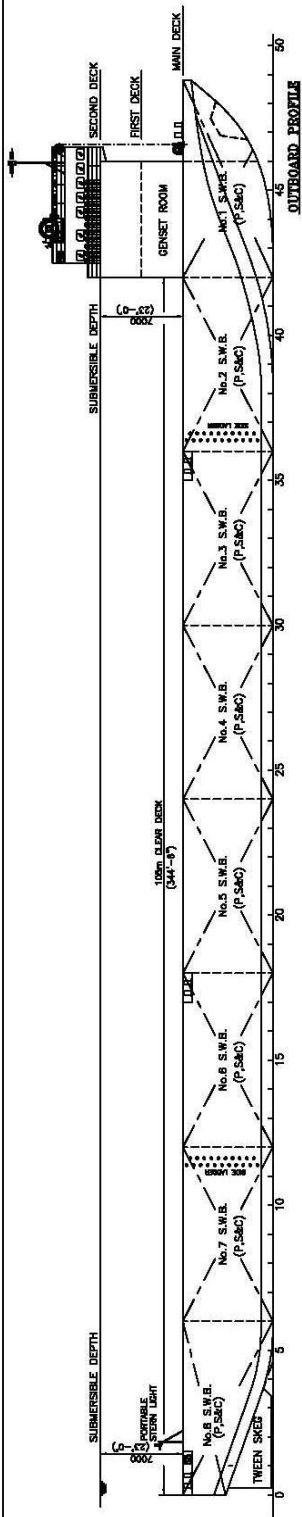
Classification	: ABS, A1 Semi-submersible tank barge
Year Built	: 2008
Port of Registry	: Singapore
Length Overall	: 122.00 m
Length B.P.	: 116.76 m
Breadth Moulded	: 36.58 m
Depth Moulded	: 7.62 m
Maximum Draft	: 5.794 m
Draft (Summer Load)	: 5.89 m
Displacement (Max Draft)	: 24,177.93 tonnes
Deadweight (Max Draft)	: 18,973.52 tonnes
Max. Submerged Draft	: 14.62 m
Max. Submersion	: 7.0 m (23Ft) abv Main Deck
IMO No	: 9465007
Official No	: 394061
GRT	: 9772
NRT	: 2931
Deck Loading (Uniform)	: 20 tonnes/m <sup>2</sup>
Free Deck Area	: about 4,200 m <sup>2</sup>
Watertight Compartments	: 25 Nos
Ballast Tanks	: 24 Nos
Fuel Storage Capacity	: 30 m <sup>3</sup>
Ballast Pumps	: 2 at 1,000m <sup>3</sup> /Hr at abt 25m WH
Generators	: 2x480kW, 440V, 3Ph, 50Hz
Winch & Bow Anchor	: 1 x Anchor Winch with 3540kg stokless bow anchor

#### Equipped With:

- Trim/Heel/Draft Indicators
- Remote Sounding System on all Ballast Tanks.
- Removable Stern Caissons.

#### Vessels Ideally Suited For:

- Submerging Irrespective of Waterdepth.
- Transportation of Offshore Modules, Jackets and Constructions Parts.
- Transportation of all types of floating Equipment: Rigs, Dredges, pontoons, Ferries, Vessels, River Barges, Tugs etc.
- Transportation of Pipes, Logs, Timber etc.
- Dry Docking of Rigs, Dredgers, Tugs and Barges in Remote Areas.
- Precise Positioning, with regard to Heel & Angle underneath the Cargo.



**PRINCIPAL PARTICULARS:**  
 LENGTH O.A. 122.00 m (400'-3")  
 BEAM MLD. 36.58 m (120'-0")  
 DEPTH MLD. 7.62 m (25'-0")  
 FRAME SPACING 2.50 m (8'-2 1/4")  
 DECK LOADING 20 t/m<sup>2</sup>  
 COMPLIMENT NIL  
 SUBMERSIBLE DEPTH 7 m (23'-0") ABOVE MAIN DECK

NO.	REVISION	DATE	BY	CHKD.	APP'D.	DESCRIPTION
1						ISSUED FOR CONSTRUCTION
2						REVISION
3						REVISION
4						REVISION
5						REVISION
6						REVISION
7						REVISION
8						REVISION
9						REVISION
10						REVISION
11						REVISION
12						REVISION
13						REVISION
14						REVISION
15						REVISION
16						REVISION
17						REVISION
18						REVISION
19						REVISION
20						REVISION
21						REVISION
22						REVISION
23						REVISION
24						REVISION
25						REVISION
26						REVISION
27						REVISION
28						REVISION
29						REVISION
30						REVISION
31						REVISION
32						REVISION
33						REVISION
34						REVISION
35						REVISION
36						REVISION
37						REVISION
38						REVISION
39						REVISION
40						REVISION
41						REVISION
42						REVISION
43						REVISION
44						REVISION
45						REVISION
46						REVISION
47						REVISION
48						REVISION
49						REVISION
50						REVISION
51						REVISION
52						REVISION
53						REVISION
54						REVISION
55						REVISION
56						REVISION
57						REVISION
58						REVISION
59						REVISION
60						REVISION
61						REVISION
62						REVISION
63						REVISION
64						REVISION
65						REVISION
66						REVISION
67						REVISION
68						REVISION
69						REVISION
70						REVISION
71						REVISION
72						REVISION
73						REVISION
74						REVISION
75						REVISION
76						REVISION
77						REVISION
78						REVISION
79						REVISION
80						REVISION
81						REVISION
82						REVISION
83						REVISION
84						REVISION
85						REVISION
86						REVISION
87						REVISION
88						REVISION
89						REVISION
90						REVISION
91						REVISION
92						REVISION
93						REVISION
94						REVISION
95						REVISION
96						REVISION
97						REVISION
98						REVISION
99						REVISION
100						REVISION

**General Arrangement**  
 SUBMERSIBLE DECK CARGO BARGE  
 CONAN WU & ASSOCIATES  
 1:2000 CA158/G-1 II

THIS DRAWING AND THE INFORMATION CONTAINED HEREIN ARE HEREBY  
 GUARANTEED TO BE ACCURATE AND COMPLETE TO THE BEST OF OUR KNOWLEDGE  
 AND BELIEF AT THE TIME OF THE ISSUANCE OF THIS DRAWING. THE USER  
 OF THIS DRAWING SHALL BE RESPONSIBLE FOR OBTAINING ALL NECESSARY  
 PERMITS AND REGULATIONS FROM THE APPROPRIATE AGENCIES.  
 CONAN WU & ASSOCIATES  
 1:2000 CA158/G-1 II