

POSH MAYSA

3,150 BHP / 49.4M / Utility Maintenance Vessel



Class Notation **ABS +A1, Offshore Support Vessel, (E), +AMS, UWILD, CRC, SPS, RW**

Principal Particulars

Flag	Singapore
Year Built	2016
Place Built	PaxOcean Engineering Pte Ltd, Zhuhai, China
Design Draft	2.90 m
Max Summer Draft	3.50 m
Gross Tonnage	1,285 T
Net Tonnage	385 T
Deadweight(Max Draft)	710 T @ 3.5 m draft
Displacement	1,666 T
IMO No.	9812846
Design	PX1091 50 m
Call Sign	9V5131

Dimensions

Length Overall	50 m
Beam Overall	15 m
Depth Moulded	5 m

Performance

Max Speed	11 - 12 kts*
Economical Speed	8 - 10 kts*

* Subject to actual weather and operating conditions

Cargo Deck

Deck Cargo Area	Approx. 200m ²
Deck Cargo Dimension	About 11 m x 13 m
Deck Cargo Capacity	400T
Deck Strength	3 T/m ²
Reefer Points	4 (2 x 440v, 2 x 230v)

Capacities

Fuel Tank	240 m ³
Fresh Water	140 m ³

Discharging Rates

Fresh Water/Pump	90 m ³ /hr@20 m head
Fuel/Pump	90 m ³ /hr@20 m head

Accommodation

1 man x 7 Berth Cabins	7
2 man x 11 Berth Cabins	22
3 man x 6 Berth Cabins	18
Total (POB)	47

Machinery & Equipment

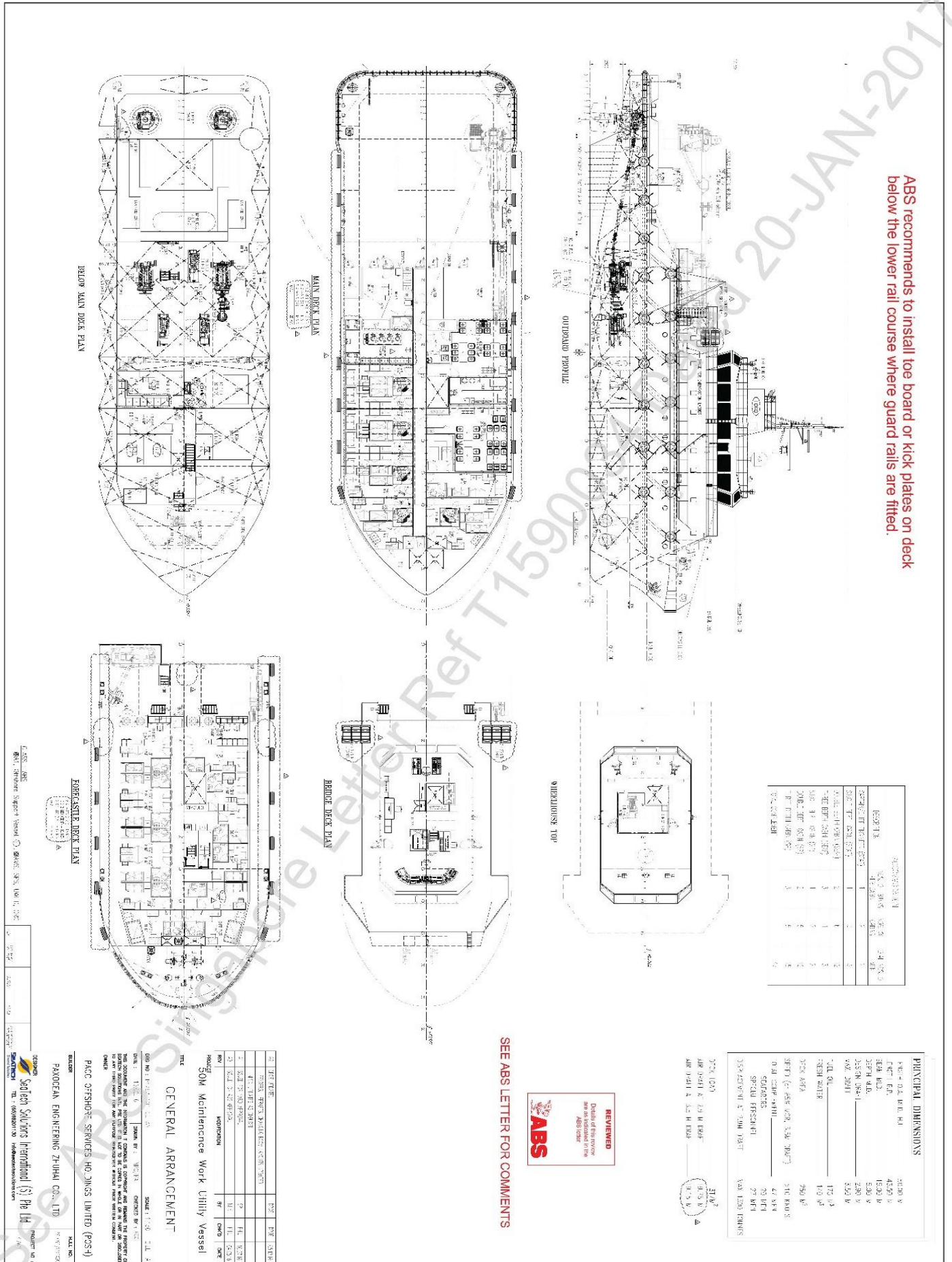
Main Engines	2 x Caterpillar 3512C developing 970kW @ 1,200 rpm each (2 x 1,300bhp)
Generators	3 x Cummins KTA19-D(M1) 485kW each
Emergency Generator	1 x Cummins 6BT5.9-D(M) 91kW
Capstan	2 x 3T each
Propellers	2 x Schottel SRP 1012FP Azimuth Propellers
Bow Thruster	2 x Kawasaki KT-32B3 Controllable Pitch 280kW each
Deck Crane	1 x Heela HMR240/30-2S SWL 20T @ 4m; SWL 1.5T @ 30m

Oil Spill Equipment

Dispersant Capacity	Nil
Foam Capacity	Nil
Rescue Boat	1 x 6-man SK45K FRP Rescue Boat
Life rafts	6 x 30-man
Life Buoys	8
Life Jackets	56

POSH MAYSA

3,150 BHP / 49.4M / Utility Maintenance Vessel



ABS recommends to install toe board or kick plates on deck below the lower rail course where guard rails are fitted.

SEE ABS LETTER FOR COMMENTS



GENERAL ARRANGEMENT

PROJECT: SOM Maintenance Work Utility Vessel

DATE: 13.02.2017

DESIGNER: PAOCC OFFSHORE SERVICES HOUSING LIMITED (PSS-)

ENGINEER: PAOCCAN ENGINEERING ZHIMAI CO., LTD

REVIEWER: KAY JIN CHAN

SEACHOON
Seachoon Services International (S) Pte Ltd
100 Robinson Road, #10-01, Singapore 068902