

# POSH MARIAM

## 3,150 BHP / 49.4M / Utility Maintenance Vessel



Class Notation: ABS +A1, Offshore Support Vessel, (E), +AMS, UWILD, CRC, SPS, RW

### Principal Particulars

Flag	Singapore
Year Built	2016
Place Built	Jinjiang Shipbuilding & Engineering Pte Ltd, China
Design Draft	3.50 m
Max Summer Draft	3.41 m
Gross Tonnage	1,134 T
Net Tonnage	340 T
Deadweight (Max Draft)	913 T @ 3.41 m draft
Displacement	1,883 T
IMO No.	9809617
Design	POET 49 m
Call Sign	9V5130

### Dimensions

Length Overall	49.4 m
Beam Overall	15 m
Depth Moulded	4.45 m

### Performance

Max Speed	11 - 12 kts*
Economical Speed	8 - 10 kts*

\* Subject to actual weather and operating conditions

### Cargo Deck

Deck Cargo Area	Approx. 200m <sup>2</sup> (including portable deck store)
Deck Cargo Dimension	About 11 m x 18 m
Deck Cargo Capacity	400T
Deck Strength	5 T/m <sup>2</sup>
Reefer Points	4 (2 x 440v, 2 x 230v)

### Capacities

Fuel Tank	193 m <sup>3</sup>
Fresh Water	144 m <sup>3</sup>

### Discharging Rates

Fresh Water/Pump	45 m <sup>3</sup> /hr@50 m head
Fuel/Pump	50 m <sup>3</sup> /hr@50 m head

### Accommodation

1 man x 7 Berth Cabins	7
2 man x 17 Berth Cabins	34
Total (POB)	41 men

### Machinery & Equipment

Main Engines	2 x Niigata Engine 6L25HX developing 1,176 kW @ 750 rpm each (2 x 1,575 BHP)
Generators	4 x Cummins Diesel Main Generator 300kW 415V 3Ph 50Hz, Model:CXMXTA11-IMO-T2
Emergency Generator	1 x 90 kW 415V 3Ph 50Hz
Capstan	2 Electro-hydraulic winches x 5.0 T each
Shaft Generators	Leroy 2 x 1,200 kW each
Diesel Generators	Leroy 2 x 425 kW @ 3 x 440 V 60 Hz
Emergency Generators	Volvo Penta 1 x 196 kW
Propellers	2 x Niigata Diesel-Engine X ZP-11A Z-Peller
Bow Thruster	2 x Kawasaki 260kW, Model:KT-32B3
Deck Crane	1 x SCM Hydraulic Telescopic deck crane YQS1800 - 20 T @ 4 m; 0.5 T @ 30 m

### Oil Spill Equipment

Dispersant Capacity	8.2 m <sup>3</sup>
Foam Capacity	8.2 m <sup>3</sup>
Rescue Boat	1 unit Jiangyin Wolong JY45DR FRP boat
Life rafts	4 x 37-man and 1 x 6-man
Life Buoys	12
Life Jackets	52

Particulars given herein are believed to be correct but not guaranteed. Owner reserves the rights to amend specifications without notification.

# POSH MARIAM

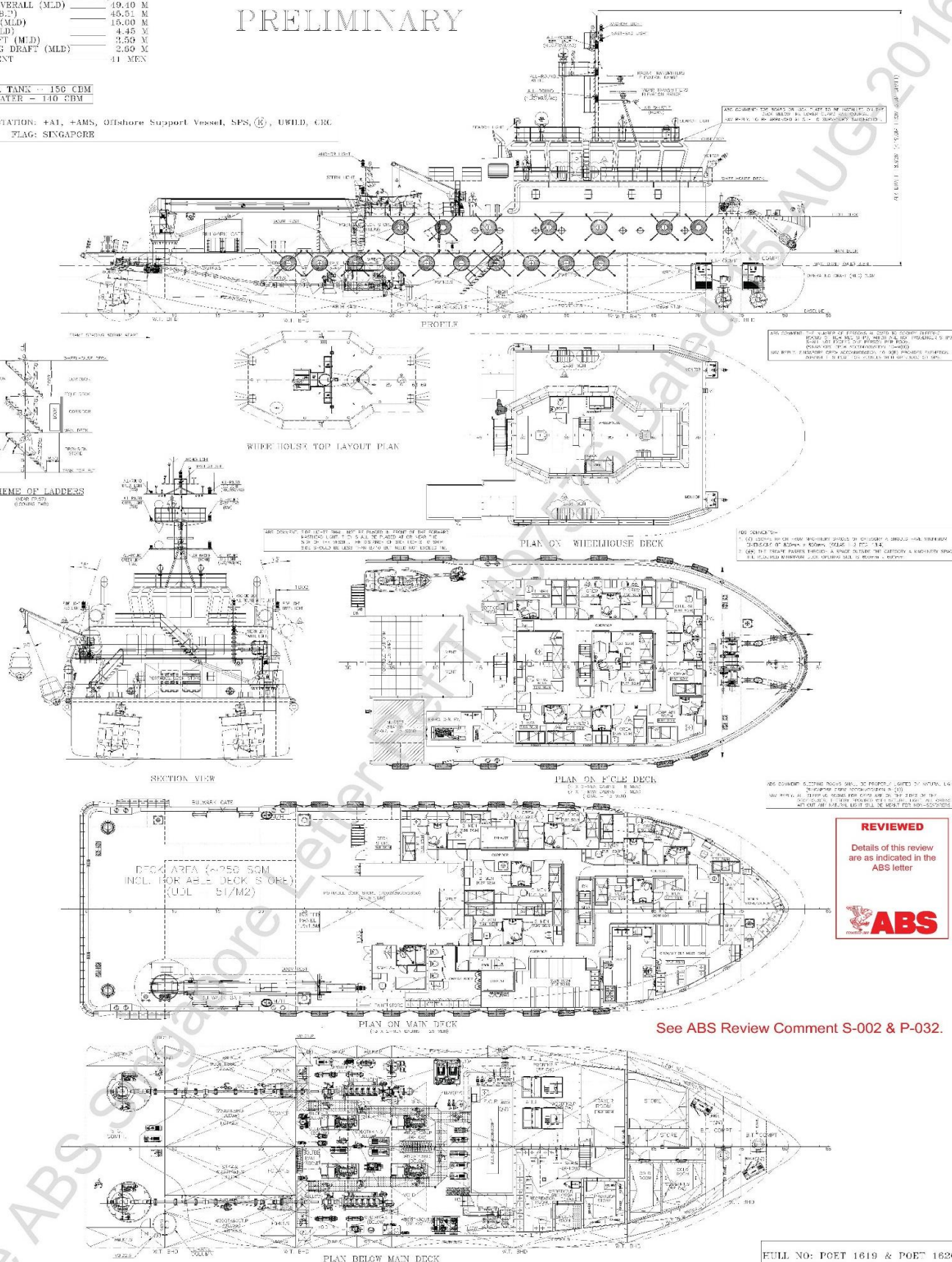
3,150 BHP / 49.4M / Utility Maintenance Vessel

PRINCIPAL DIMENSION (APPROX.)  
 LENGTH OVERALL (M.L.D) 49.40 M  
 LENGTH (B.P.) 45.51 M  
 BREADTH (M.L.D) 15.00 M  
 DEPTH (M.L.D) 4.45 M  
 MAX. DRAFT (M.L.D) 3.50 M  
 OPERATING DRAFT (M.L.D) 2.60 M  
 COMPLIMENT 41 MEN

PRELIMINARY

FUEL OIL TANK -- 150 CBM  
 FRESH WATER -- 140 CBM

CLASS NOTATION: +A1, +AMS, Offshore Support Vessel, SPS, (U), UWILD, CIC  
 FLAG: SINGAPORE



**REVIEWED**  
 Details of this review  
 are as indicated in the  
 ABS letter

See ABS Review Comment S-002 & P-032.

NO.	REV.	DESCRIPTION	DATE	BY	CHKD.	DATE	BY	CHKD.
1	0	ISSUED FOR APPROVAL	20.01.2015	gms	gms			
2	1	DESIGN UPDATE AS MARKED ABOVE	20.01.2015	gms	gms	20.01.15	gms	gms
3	2	DESIGN UPDATE AS MARKED ABOVE	31.02.2015	gms	gms	20.05.15	gms	gms
4	3	DESIGN UPDATE AS MARKED ABOVE	11.03.2015	gms	gms			
5	4	DESIGN UPDATE AS MARKED ABOVE	11.03.2015	gms	gms	23.05.15	gms	gms
6	5	DESCRIPTION OF ALTERATION	04.06.15	BT	BT			

FULL NO: POET 1819 & POET 1620

PROJECT: JELLY SHALLOW WATER  
 VESSEL: JELLY SHALLOW VESSEL

DESIGNED BY: GENERAL ARRANGING  
 DRAWN BY: POE S/PBUILDING & ENGINEERING PTE LTD  
 CHECKED BY: POE S/PBUILDING & ENGINEERING PTE LTD

DATE: 20.01.15

SCALE: 1:100

PROJECT NO: 150101

REV: 05