

POSH HOURIA

3,150 BHP / 49.4M / Utility Maintenance Vessel



Class Notation

ABS +A1, Offshore Support Vessel, (E), +AMS, UWILD, CRC, SPS, RW

Principal Particulars

Flag	Singapore
Year Built	2017
Place Built	Jinjiang Shipbuilding & Engineering Pte Ltd, China
Design Draft	3.50 m
Max Summer Draft	3.41 m
Gross Tonnage	1,134 T
Net Tonnage	340 T
Deadweight (Max Draft)	913 T @ 3.41 m draft
Displacement	1,883 T
IMO No.	9809617
Design	POET 49 m
Call Sign	9V5130

Dimensions

Length Overall	49.4 m
Beam Overall	15 m
Depth Moulded	4.45 m

Performance

Max Speed	11 - 12 kts*
Economical Speed	8 - 10 kts*

* Subject to actual weather and operating conditions

Cargo Deck

Deck Cargo Area	Approx. 200m ² (including portable deck store)
Deck Cargo Dimension	About 11 m x 18 m
Deck Cargo Capacity	400T
Deck Strength	5 T/m ²
Reefer Points	4 (2 x 440v, 2 x 230v)

Capacities

Fuel Tank	193 m ³
Fresh Water	144 m ³

Discharging Rates

Fresh Water/Pump	45 m ³ /hr@50 m head
Fuel/Pump	50 m ³ /hr@50 m head

Accommodation

1 man x 7 Berth Cabins	7
2man x 17 Berth Cabins	34
Total (POB)	41 men

Machinery & Equipment

Main Engines	2 x Niigata Engine 6L25HX developing 1,176 kW @ 750 rpm each (2 x 1,575 BHP)
Generators	4 x Cummins Diesel Main Generator 300kW 415V 3Ph 50Hz, Model: CXMXTA11-IMO-T2
Emergency Generator	1 x 90 kW 415V 3Ph 50Hz
Capstan	2 Electro-hydraulic winches x 5.0 T each
Shaft Generators	Leroy 2 x 1,200kW each
Diesel Generators	Leroy 2 x 425 kW @ 3 x 440 V 60 Hz
Emergency Generators	Volvo Penta 1 x 196 kW
Propellers	2 x Niigata Diesel-Engine X ZP-11A Z-Peller
Bow Thruster	2 x Kawasaki 260kW, Model: KT-32B3
Deck Crane	1 x SCM Hydraulic Telescopic deck crane YQS1800 - 20 T @ 4 m; 0.5 T @ 30 m

Oil Spill Equipment

Dispersant Capacity	8.2 m ³
Foam Capacity	8.2 m ³
Rescue Boat	1 unit Jiangyin Wolong JY45DR FRP boat
Life rafts	4 x 37-man and 1 x 6-man
Life Buoys	12
Life Jackets	52

POSH HOURIA

3,150 BHP / 49.4M / Utility Maintenance Vessel

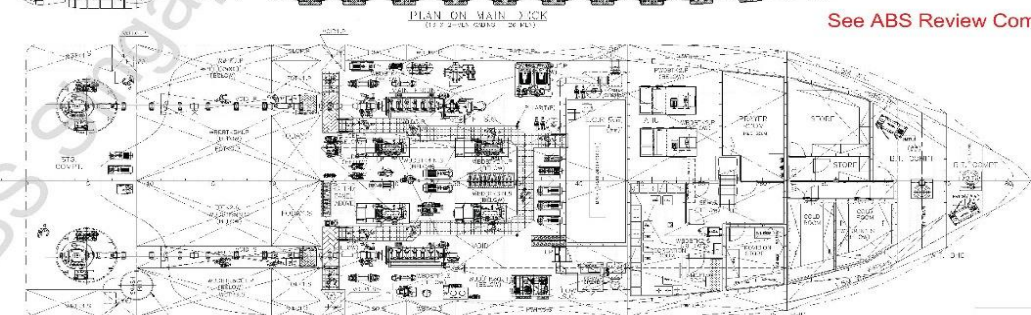
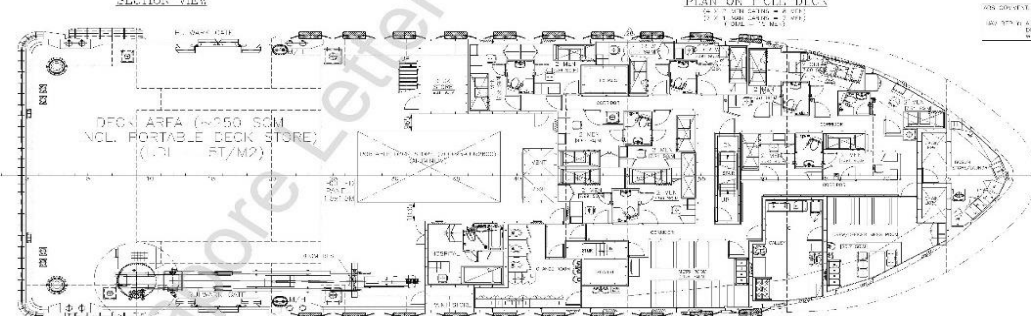
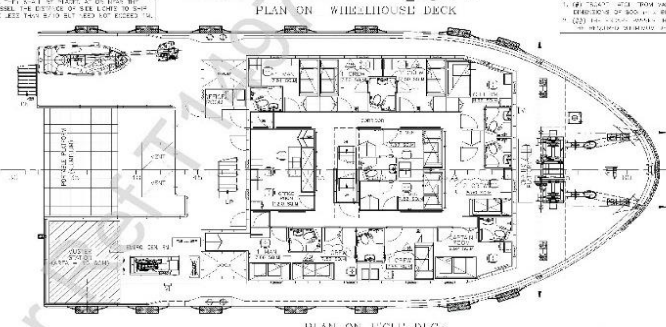
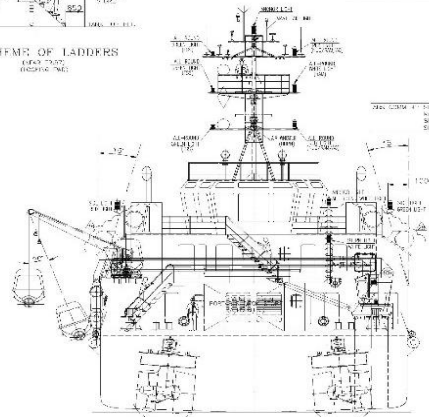
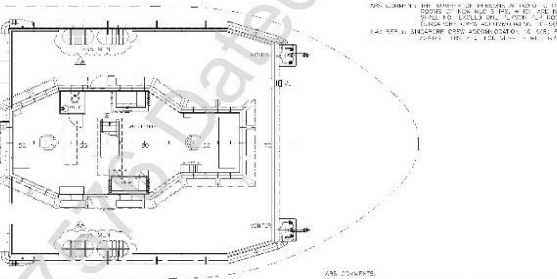
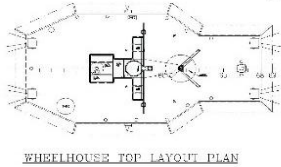
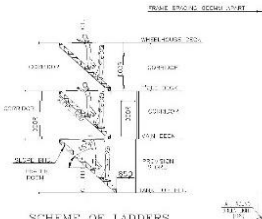
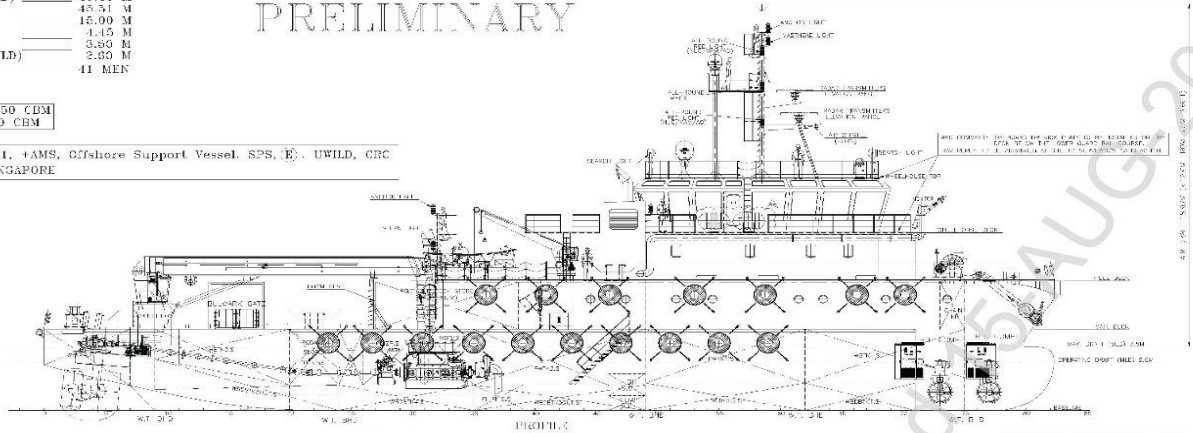
PRINCIPAL DIMENSION (APPROX.)

LENGTH OVERALL (MLD)	49.40 M
LENGTH (BLT)	45.51 M
BREADTH (MLD)	15.00 M
DEPTH (MLD)	4.15 M
MAX. DRAFT (MLD)	3.50 M
OPERATING DRAFT (MLD)	2.50 M
COMPLEMENT	41 MEN

FUEL OIL TANK - 150 CBM
FRESH WATER - 140 CBM

CLASS NOTATION: -A1, +AMS, Offshore Support Vessel, SPS, E, UWILD, CRC
FLAG: SINGAPORE

PRELIMINARY



REVIEWED
Details of this review are as indicated in the ABS letter

See ABS Review Comment S-002 & P-032.

HULL NO: POET 1616 & POET 1632

NO.	REV.	DESCRIPTION	DATE	BY	CHECKED	DATE	BY	DESIGNED	DATE	BY	PROJECT	NO.
1	1	ISSUED FOR APPROVAL	17.04.2016	gpc	18.04.2016	gpc	18.04.2016	18.04.2016	18.04.2016	gpc	3,150 BHP / 49.4M / Utility Maintenance Vessel	001
2	1	REVISION AS PER COMMENTS	18.04.2016	gpc	18.04.2016	gpc	18.04.2016	18.04.2016	18.04.2016	gpc	GENERAL ARRANGEMENT	002
3	1	REVISION AS PER COMMENTS	18.04.2016	gpc	18.04.2016	gpc	18.04.2016	18.04.2016	18.04.2016	gpc	GENERAL ARRANGEMENT	003
4	1	REVISION AS PER COMMENTS	18.04.2016	gpc	18.04.2016	gpc	18.04.2016	18.04.2016	18.04.2016	gpc	GENERAL ARRANGEMENT	004
5	1	REVISION AS PER COMMENTS	18.04.2016	gpc	18.04.2016	gpc	18.04.2016	18.04.2016	18.04.2016	gpc	GENERAL ARRANGEMENT	005
6	1	REVISION AS PER COMMENTS	18.04.2016	gpc	18.04.2016	gpc	18.04.2016	18.04.2016	18.04.2016	gpc	GENERAL ARRANGEMENT	006
7	1	REVISION AS PER COMMENTS	18.04.2016	gpc	18.04.2016	gpc	18.04.2016	18.04.2016	18.04.2016	gpc	GENERAL ARRANGEMENT	007
8	1	REVISION AS PER COMMENTS	18.04.2016	gpc	18.04.2016	gpc	18.04.2016	18.04.2016	18.04.2016	gpc	GENERAL ARRANGEMENT	008
9	1	REVISION AS PER COMMENTS	18.04.2016	gpc	18.04.2016	gpc	18.04.2016	18.04.2016	18.04.2016	gpc	GENERAL ARRANGEMENT	009
10	1	REVISION AS PER COMMENTS	18.04.2016	gpc	18.04.2016	gpc	18.04.2016	18.04.2016	18.04.2016	gpc	GENERAL ARRANGEMENT	010