

POSH FULMAR

3,200 DWT/ 78m / DP 2 / Diesel Electric / PSV



Class Notation DNV +1A1, SF, E0, DK(+), HL(3.0), DynposAUTR, Clean design, LFL*, BIS, COMF V(3),NAUT OSV(A), Fire Fighter 1, OILREC

Principal Particulars

Flag	Singapore
Call Sign	9V7601
Year Built	2013
Place Built	PaxOcean Engineering, Zhuhai, China
Design Draft	5.10 m
Max Draft	5.90 m
Gross Tonnage	2,644 T
Net Tonnage	985 T
Deadweight (Max Draft)	3,178 T @ 5.90 m draft
Displacement	5,309 T
IMO No.	9648623
Design	Rolls-Royce UT 755 CD

Dimensions

Length Overall	78.70 m
Beam Overall	16.00 m
Depth Moulded	7.00 m
Length B.P.	70.10 m

Performance

Max Speed	12.00 kts
Economical Speed	10.00 kts

* Subject to actual weather and operating conditions

Cargo Deck

Deck Cargo Area	670.0 m ²
Deck Cargo Dimension	50.7 m x 13.2 m
Deck Cargo Capacity	1,450.0 T
Deck Strength	5.0 T/m ²
Reefer Points	6 x 440V

Capacities

Fuel Tank	882.86 m ³
Fresh Water	695.26 m ³
Drill Water *	1,326.80 m ³ (shared with ballast water)
Ballast Water *	1,326.80 m ³ (shared with drill water)
Mud Tank *	820.66 m ³ (shared with brine)
Brine Tank *	820.66 m ³ (shared with mud)
Dry Bulk Tank	251.65 m ³ (in 5 tanks)
Methanol Tank	135.35 m ³
Base Oil Tank	324.26 m ³

* Indicates tanks with shared capacity

Discharging Rates

Drill Water/Pump	1 x 172 m ³ /hr@95 mlc
Fresh Water/Pump	1 x 150 m ³ /hr@90 mlc
Fuel/Pump	1 x 150 m ³ /hr@90 m head
Brine/Pump	1 x 75 m ³ /hr@18bar
Liquid mud/Pump	2 x 100 m ³ /hr@18bar
Dry Bulk Tank	2 x 1368 m ³ /hr, 80psi/5.6bar & 75m head

Accommodation

1 – Berth Cabins	8
2 – Berth Cabins	9
Total (POB)	26

Machinery & Equipment

Main Generator	Caterpillar C32, 4 x 994 kW
Emergency Generator	John Deere 1 x 99 kW

Thruster & Propulsion

Azimuth Thruster/Propellers	Rolls-Royce US205CP, 2 x 1470 kW
Bow Thruster	Rolls-Royce TT1850, 2 x 700 kW

Deck Crane

Fixed Crane	SWL 5.0 T @ 16.0 m radius
-------------	---------------------------

Mooring Equipment

Anchors	2 x SPEK Type Anchor; 2,850 kg each
Anchor Windlass	Rolls-Royce 2 x 8.0 T each @ 0-12 m/min
Tugger Winch	Rolls-Royce 2 x 10.0 T each @ 0-19 m/min
Capstans	Rolls-Royce 2 x 8.0 T each @ 0-16 m/min

Dynamic Positioning System

DP Class	DP 2 Dynpos AUTR, Rolls-Royce, Poscon joystick system
References	2 x DGPS + 1 Laser Cyscan
MRU	3

Fire Fighting and Rescue

Firefighting System	FiFi 1
FiFi Pump	2 x 1,600 m ³ /hr
FiFi Monitors	2 x 1,200 m ³ /hr
Spray Booms	2 x 6.0 m/Fixed Nozzle
Dispersant Capacity	Nil
Foam Capacity	2 m ³
Rescue Boat	1 x 15 man rigid hull waterjet FRC, 160 hp, ≥8 kts
Life rafts	6 x 25 man
Life Buoys	12
Life Jackets	38

POSH FULMAR

3,200 DWT/ 78m / DP 2 / Diesel Electric / PSV

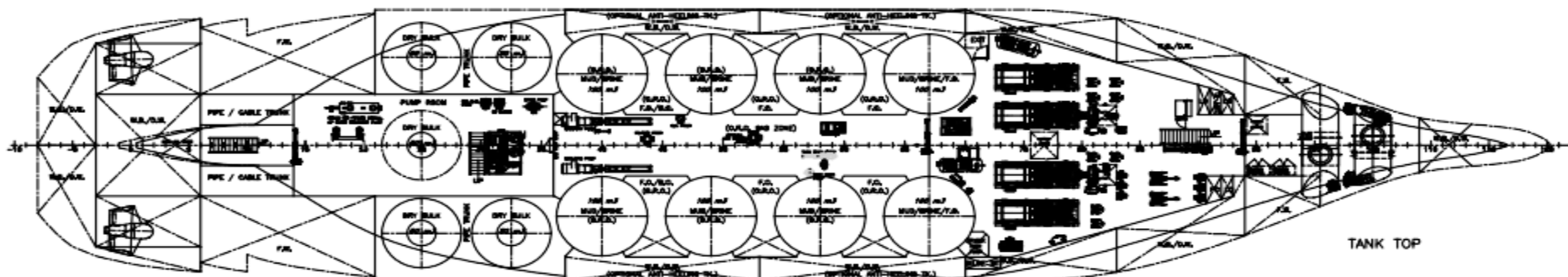
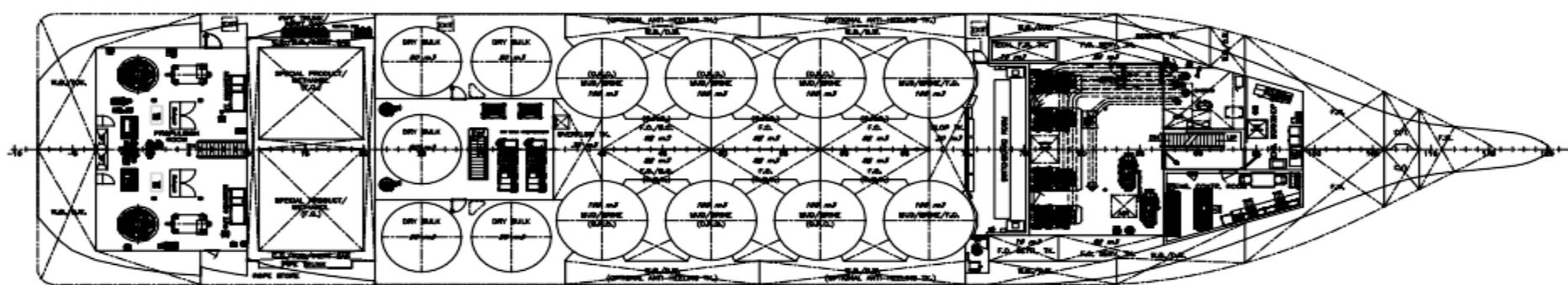
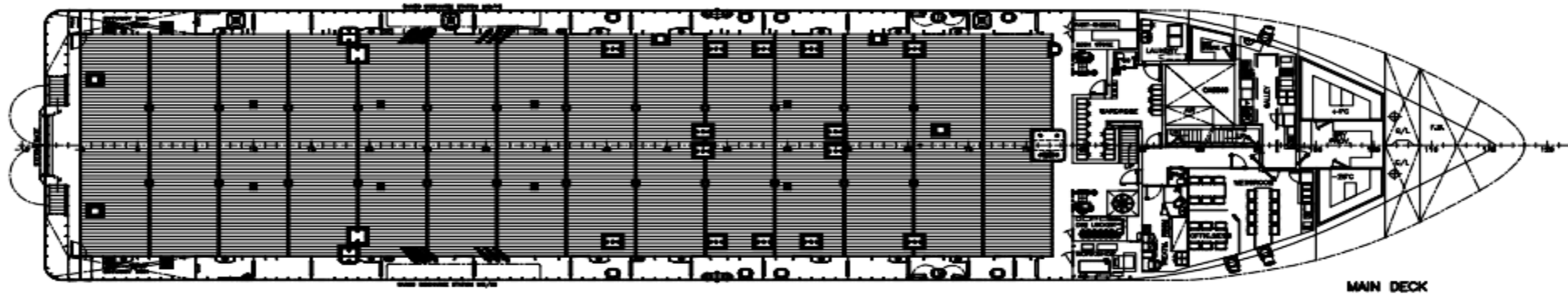
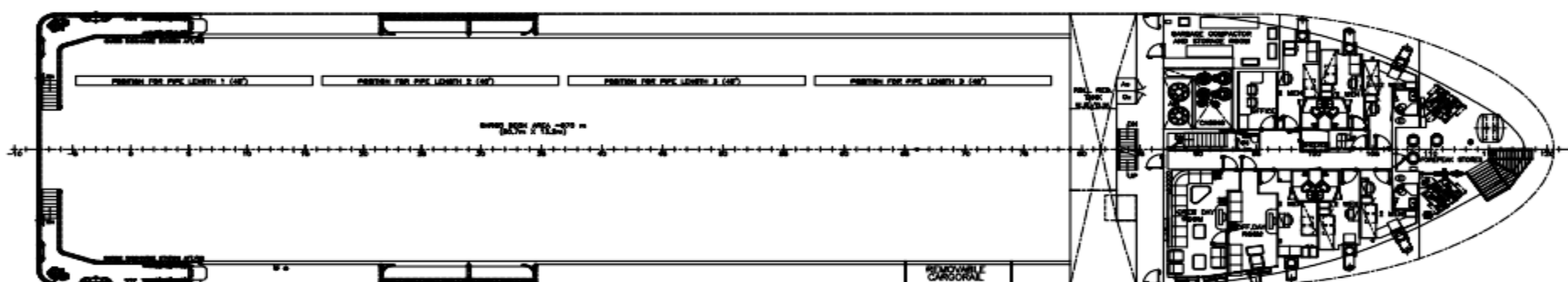
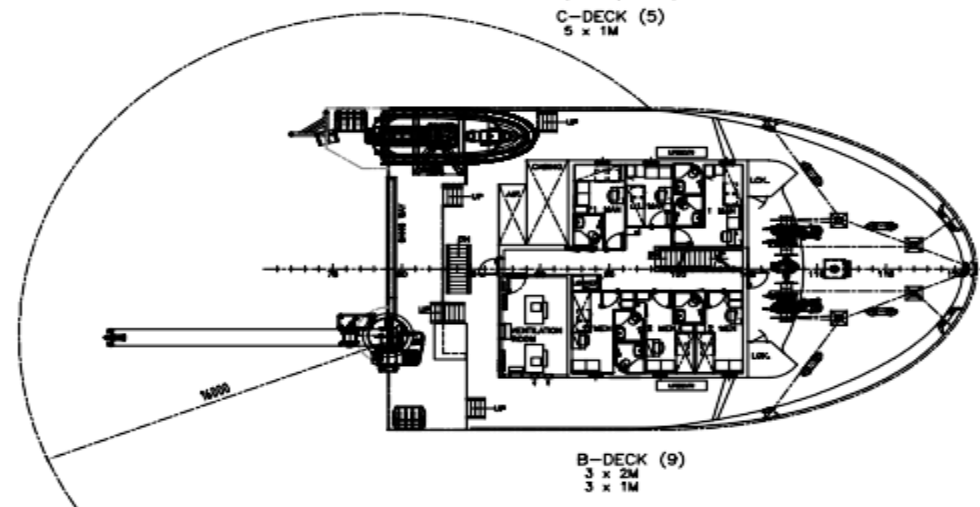
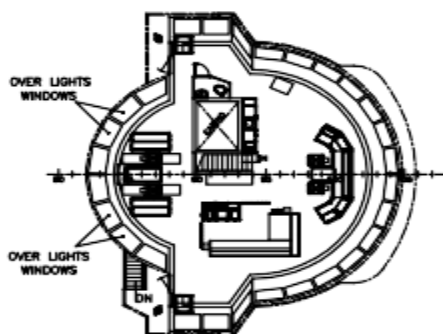
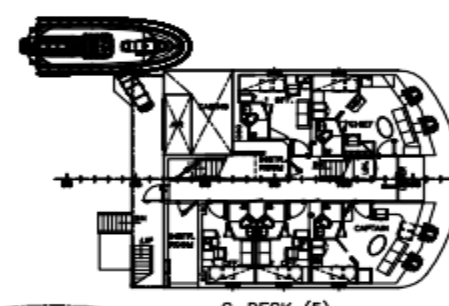
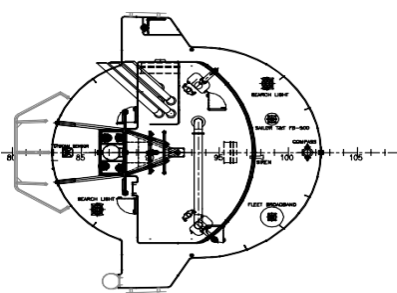
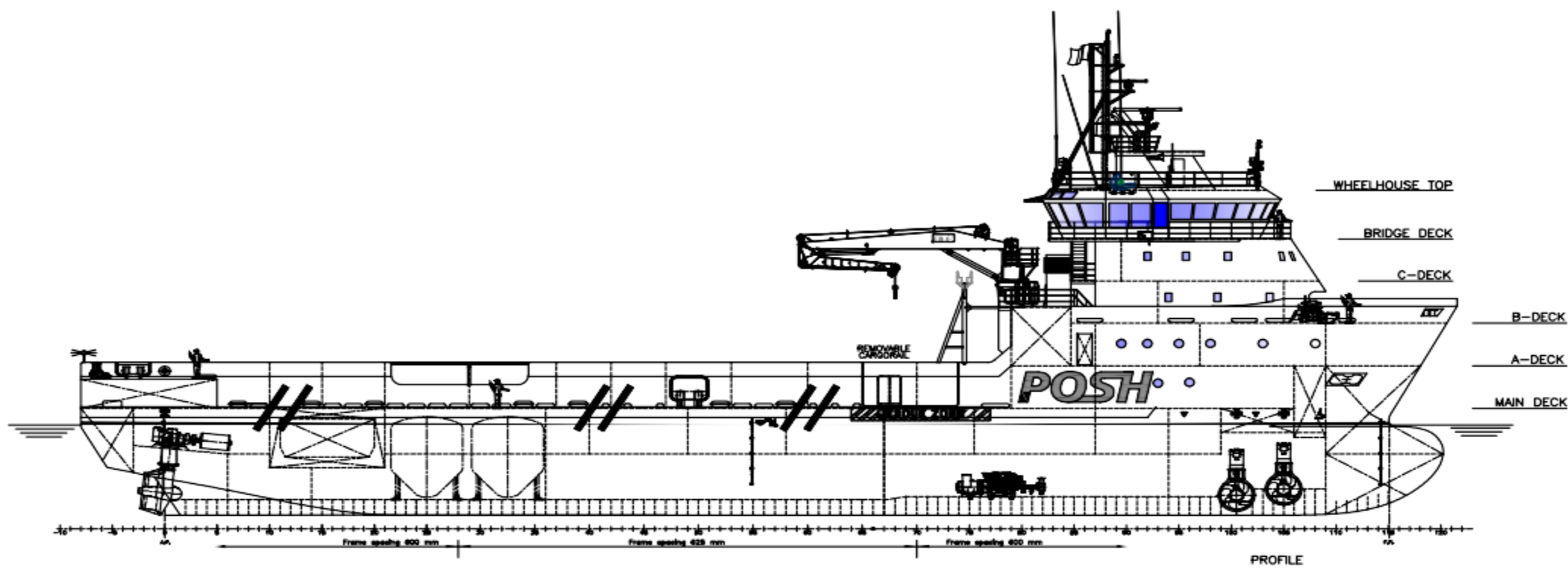
CARGO CAPACITY PLAN

Tank No.	Volume m ³	Fuel m ³	Fresh Water m ³	Ballast Water m ³	Mud m ³	Brine m ³	ORO m ³	Drill Water m ³	Dry Bulk m ³	Methanol m ³	Base Oil m ³
		SG 0.900	SG 1.000	SG 1.025	SG 3.000	SG 2.800	SG 1.000	SG 1.000	SG 2.160	SG 0.791	SG 0.830
*1	33			33				33			
2	72.3		72.3								
3	72.3		72.3								
*4	74.4			74.4				74.4			
*5	95.8			95.8				95.8			
*7A	60			60				60			
*7B	59			59				59			
*8	85.7			85.7				85.7			
*9	85.7			85.7				85.7			
*10	79.2			79.2				79.2			
*11	79.2			79.2				79.2			
12	54.6		54.6								
13	54.9		54.9								
14	51		51								
15	51.3		51.3								
*16	77.5			77.5				77.5			
*17	77.5			77.5				77.5			
18	26.3		26.3								
*19	62.5		62.5								
*20	170.4		170.4	170.4				170.4			
*22	64.1	64.1					64.1				
*23	71.2	71.2					71.2				
24	211.8			211.8							
25	81.4		81.4								
30	19.6	19.6									
31	19.6	19.6									
33	15.7	15.7									
34	82.1	82.1									
35	82.1	82.1									
36	82.1	82.1					82.1				
37	82.1	82.1					82.1				
*38	82.1	82.1					82.1				
*39	82.1	82.1					82.1				
*50	102.1	102.1			102.1	102.1					
*51	102.1	102.1			102.1	102.1					
*52	102.7				102.7	102.7	102.7				
*53	102.7				102.7	102.7	102.7				
*54	102.7				102.7	102.7	102.7				
*55	102.7				102.7	102.7	102.7				
*56	102.7				102.7	102.7	102.7				
*57	102.7				102.7	102.7	102.7				
60	50.3					50.3					
61	50.3					50.3					
62	50.3					50.3					
63	50.3					50.3					
64	50.3					50.3					
*66	90.3			90.3				90.3			
*67	90.3			90.3				90.3			
*68	84.3			84.3				84.3			
*69	84.3			84.3				84.3			
SUM		887	697	1538.4	820.4	820.4	616.2	1326.6	251.5	135.3	328.4

Particulars given herein are believed to be correct but not guaranteed. Owner reserves the rights to amend specifications without notification.

POSH FULMAR

3,200 DWT / 78m / DP 2 / Diesel Electric / PSV



0	01/11/12	FIRST ISSUE						
Rev.	Date	Reason for Issue	Drawn	Checked	Approved	Scale	Sheet	Total
PaxOcean Engineering Project: PK1019 Title: GENERAL ARRANGEMENT								
Scale: 1:150 Project: 107194 - 101 - 001 Date: 01/11/12 Drawn: [Signature] Checked: [Signature] Approved: [Signature]								