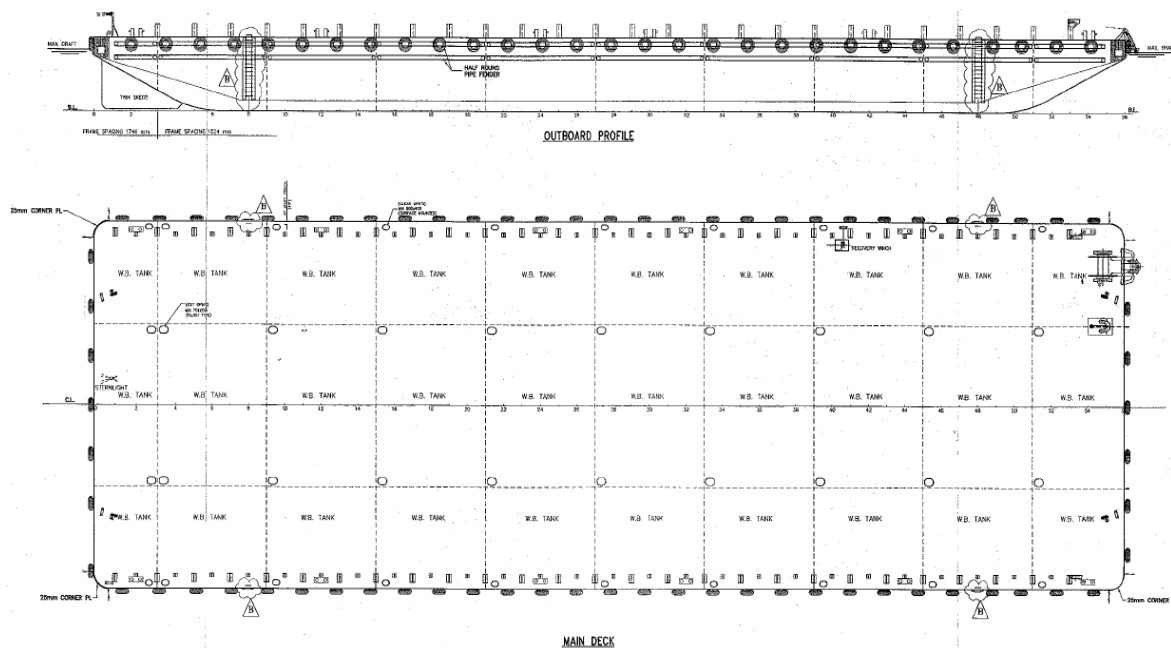


# MARITIME ICON

282 X 90 X 18 ft / 7,700 (TONS) DWT / DECK/ TANK BARGES



Name of Vessel	<b>Maritime Icon</b>
Year Built / Registry	2008 / Singapore
Principal Dimensions	282 x 90 x 18 ft (85.95 x 27.43 x 5.49 m)
Classification	ABS + A1 Tank Barge
Draft	15' (4.573 m)
Deadweight	Approx 7,700 t
Deck Loading	15 t/m <sup>2</sup>
Hull Plating Thickness	Deck plating 18 mm, bottom plating 14 mm, side shell plating 14 mm
Bulkheads	2 longitudinal b/h plating thickness 10 mm 9 transverse b/h plating thickness 10 mm
Tanks	30 tanks ballastable through manholes on deck
Outfitting	1 x 2200 kg anchor with hand winch. 6 sets double bitt bollards each Port and Starboard. 3 sets towing brackets at bow and 2 sets at stern all fitted with chafing chains. 58 heavy duty tyre fenders. 30 manholes on deck one for each tank with recess type in cargo area.
Cargo stanchion	26 sets deck stanchion each fitted Port and Starboard side 4 ft high at every 2 frame spacing from frame 3 to frame 53. 26 pieces eye lugs for cargo lashing each fitted at Port and Starboard side at every alternate frame from frame 2 to frame 52.