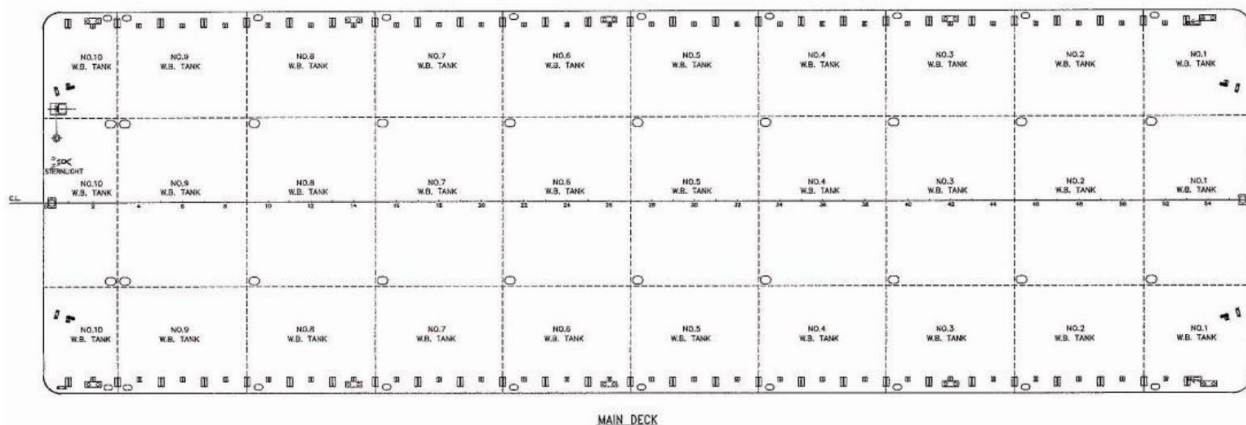
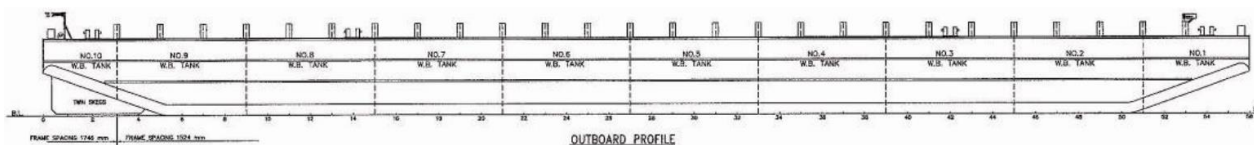


# MARITIME HOPE

282 X 90 X 18 ft / 8,000 (TONS) DWT / DECK/TANK BARGES



Name of Vessel	<b>Maritime Hope</b>
Year Built / Registry	2004 / Indonesia
Principal Dimensions	282 x 90 x 18 ft (85.95 x 27.43 x 5.49 m)
Classification	ABS + A1 Tank Barge
Draft	4.10 m approx
Deadweight	Approx 8,000 t
Deck Loading	15 t/m2
Hull Plating Thickness	Deck plating 18 mm, bottom plating 14 mm, side shell plating 14 mm
Bulkheads	2 longitudinal b/h plating thickness 10 mm 9 transverse b/h plating thickness 10 mm
Tanks	40 tanks ballastable through manholes on deck
Outfitting	1 x 2200 kg anchor with hand winch. 5 sets double bitt bollards each Port and Starboard. 3 sets towing brackets at bow and 2 sets at stern all fitted with chafing chains. 58 heavy duty tyre fenders dia min 1200 mm x 300 mm. 30 manholes on deck one for each tank with recess type in cargo area.
Cargo stanchion	26 sets deck stanchion each fitted Port and Starboard side 4 ft high at every 2 frame spacing from frame 3 to frame 53. 26 pieces eye lugs for cargo lashing each fitted at Port and Starboard side at every alternate frame from frame 2 to frame 54.