

POSH DAUNTLESS

7,000 BHP / 90 TBP / DP2 / AHTS



Class Notation

ABS +A1, Towing Vessel, Fire Fighting Vessel Class 2, Offshore Support Vessel AH, Oil Recovery Capability Class 2, (E), +AMS, +DPS-2

Principal Particulars

Flag	Singapore
Call Sign	9V8496
Year Built	2013
Place Built	PRM Offshore Heavy Industries Pte Ltd
Design Draft	6.25 m
Max Summer Draft	6.25 m
Gross Tonnage	3,208.0 T
Net Tonnage	962.0 T
Deadweight (Max Draft)	3,100 T @ 6.25 m
Displacement	5,914 T
IMO No.	9503079
Design	81m Anchor Handling / Supply Vessel

Dimensions

Length Overall	81.00 m
Beam Overall	16.80 m
Depth Moulded	7.50 m

Performance

Max Speed	12.00 kts
Economical Speed	10.00 kts

* Subject to actual weather and operating conditions

Cargo Deck

Deck Cargo Area	650 m ²
Deck Cargo Dimension	45.0 m x 14.0 m
Deck Cargo Capacity	1,200 T
Deck Strength	5.0 T/m ²
Reefer Point	6 x 440V

Capacities

Fuel Tank	590.0 m ³
Cargo Fuel Oil Tank*	830.0 m ³ (shared with base oil)
Fresh Water	370.0 m ³
Drill Water*	1,015 m ³ (shared with oil recovery)
Base Oil*	376.0 m ³ (shared with cargo fuel oil)
Mud Tank*	605.0 m ³ (shared with brine)
Brine Tank*	605.0 m ³ (shared with mud)
Dry Bulk Tank	339.6 m ³ (in 6 tanks)
Oil Recovery*	1,515 m ³ (shared with drill water)

* Indicates tanks with shared capacity

Discharging Rates

Drill Water/Pump	2 x 150 m ³ /hr @ 80 m head
Fresh Water/Pump	2 x 100 m ³ /hr @ 80 m head
Fuel/Pump	2 x 150 m ³ /hr @ 80 m head
Brine/Pump	2 x 150 m ³ /hr @ 80 m head
Liquid Mud/Pump	2 x 100 m ³ /hr @ 80 m head
Dry Bulk Tank	339.6 m ³ (in 6 tanks)

Accommodation

1 – Berth Cabins	2
2 – Berth Cabins	4
4 – Berth Cabins	14
Total (POB)	66

Main Engines & Generators

Main Engine	Yanmar 8EY26, 2 x 2,560 kW each
Generator	Caterpillar 3412, 6 x 590kW each + Caterpillar C4.4, 1 x 92kW

Thrusters & Propulsion

Bow Thruster	Kawasaki KT-88B3, 2 x 550 kW (2 x 9.0T)
Propeller	Kawasaki KST-220 ZC/B Rexpeller Azimuth Thruster in kort nozzle

Deck Crane

Fixed Crane	SWL 3.0T @ 8 m
-------------	----------------

Anchor Handling/Tow Equipment

Tow/Anchor Handling Winch	Rolls Royce Bratvaag SL150W-2T double drum waterfall type
Stall Pull Capacity	160.0 T
Brake Holding Capacity	225.0 T
Tow Drum Capacity	1,200.0 m x 52.0 mm dia wire
Anchor Handling Capacity	1,200.0 m x 52.0 mm dia wire
Storage Reel Capacity	3 x 1,800.0 m x 52.0 mm dia wire
Tugger Winch	2 x 10.0 T each
Capstan	2 x 5.0 T each
Shark Jaws	1 x Triplex H-200, SWL 200.0 T
Tow Pins	1 x Triplex S-200, SWL 200.0 T
Stern Roller	5.0 m x 2.5 m dia, SWL 300.0 T

Tow/Anchor Handling Wires

Main Tow Wire	1,000.0 m x 52.0 mm dia wire
Spare Tow Wire	1,000.0 m x 52.0 mm dia wire
Anchor Handling Wire	1,000.0 m x 52.0 mm dia wire

Mooring Equipment

Anchor	2 x 2,500 kg HHP Anchor
Anchor Chain	2 x 17 shackles x 42.0 m dia
Anchor Windlass	13.0 T @ 0-12 m/min

Dynamic Positioning System

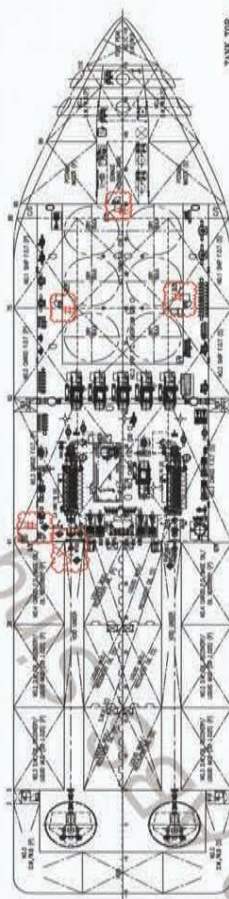
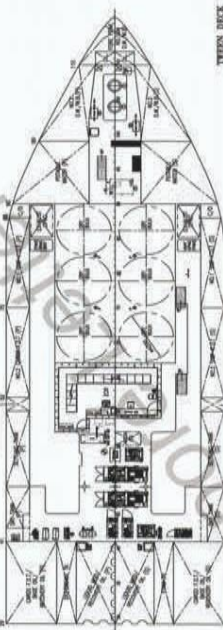
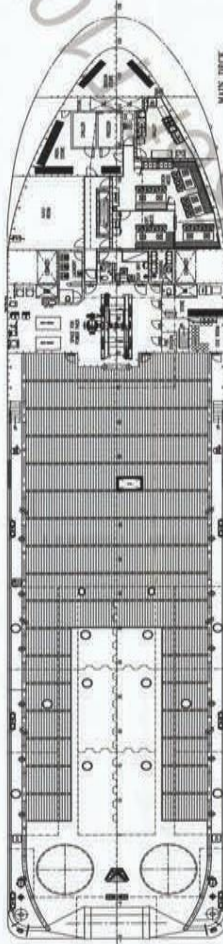
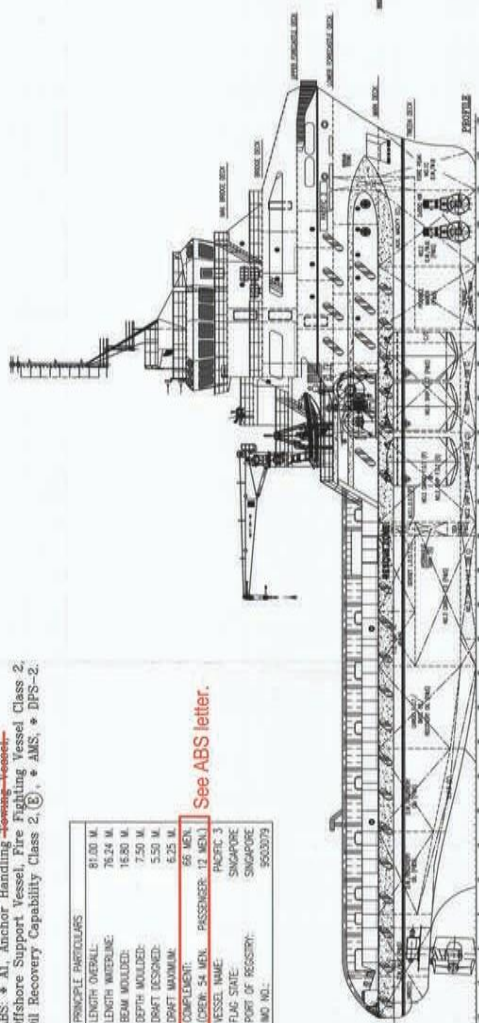
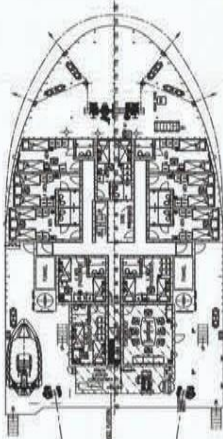
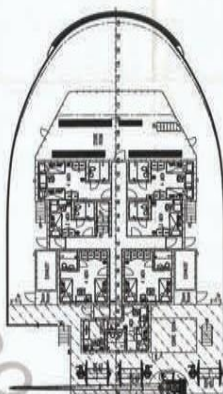
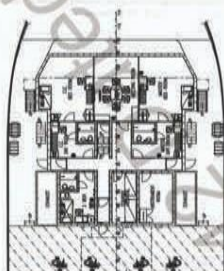
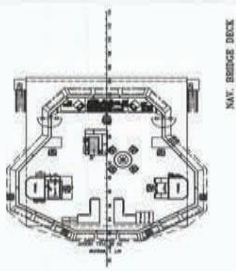
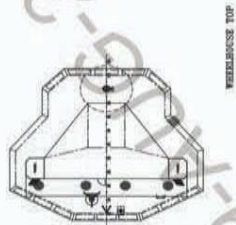
DP Class	DP 2 L3 NMS6000
References	2 x DGPS + 1 x Cyscan
VRU	2

Fire Fighting and Rescue

Firefighting System	FiFi 2
FiFi Pump	2 x 1,800 m ³ /hr + 1 x 3,600 m ³ /hr
FiFi Monitor	4 x 1,800 m ³ /hr
Spray Boom	2 x 6.0 m
Dispersant Capacity	29.0 m ³
Foam Capacity	29.0 m ³
Rescue Boat	1 x 10-man rigid hull waterjet FRC, 218 hp, 20 kts
Life Raft	8 x 25-man
Life Buoy	12
Life Jacket	90
Fixed H2S Detection System	Yes

POSH DAUNTLESS

7,000 BHP / 90 TBP / DP2 / AHTS



REVIEWED
Details of this review
are as indicated in the
ABS Letter

2182.13	UPPER TO FPM ON DANGER AREA, 8. LASHED WELD TACKS	2	UNLESS
2182.14	UPPER TO FPM ON DANGER AREA, 8. LASHED WELD TACKS	2	UNLESS
2182.15	UPPER TO FPM ON DANGER AREA, 8. LASHED WELD TACKS	2	UNLESS
2182.16	UPPER TO FPM ON DANGER AREA, 8. LASHED WELD TACKS	2	UNLESS
2182.17	UPPER TO FPM ON DANGER AREA, 8. LASHED WELD TACKS	2	UNLESS
2182.18	UPPER TO FPM ON DANGER AREA, 8. LASHED WELD TACKS	2	UNLESS
2182.19	UPPER TO FPM ON DANGER AREA, 8. LASHED WELD TACKS	2	UNLESS
2182.20	UPPER TO FPM ON DANGER AREA, 8. LASHED WELD TACKS	2	UNLESS
2182.21	UPPER TO FPM ON DANGER AREA, 8. LASHED WELD TACKS	2	UNLESS
2182.22	UPPER TO FPM ON DANGER AREA, 8. LASHED WELD TACKS	2	UNLESS
2182.23	UPPER TO FPM ON DANGER AREA, 8. LASHED WELD TACKS	2	UNLESS
2182.24	UPPER TO FPM ON DANGER AREA, 8. LASHED WELD TACKS	2	UNLESS
2182.25	UPPER TO FPM ON DANGER AREA, 8. LASHED WELD TACKS	2	UNLESS
2182.26	UPPER TO FPM ON DANGER AREA, 8. LASHED WELD TACKS	2	UNLESS
2182.27	UPPER TO FPM ON DANGER AREA, 8. LASHED WELD TACKS	2	UNLESS
2182.28	UPPER TO FPM ON DANGER AREA, 8. LASHED WELD TACKS	2	UNLESS
2182.29	UPPER TO FPM ON DANGER AREA, 8. LASHED WELD TACKS	2	UNLESS
2182.30	UPPER TO FPM ON DANGER AREA, 8. LASHED WELD TACKS	2	UNLESS
2182.31	UPPER TO FPM ON DANGER AREA, 8. LASHED WELD TACKS	2	UNLESS
2182.32	UPPER TO FPM ON DANGER AREA, 8. LASHED WELD TACKS	2	UNLESS
2182.33	UPPER TO FPM ON DANGER AREA, 8. LASHED WELD TACKS	2	UNLESS
2182.34	UPPER TO FPM ON DANGER AREA, 8. LASHED WELD TACKS	2	UNLESS
2182.35	UPPER TO FPM ON DANGER AREA, 8. LASHED WELD TACKS	2	UNLESS
2182.36	UPPER TO FPM ON DANGER AREA, 8. LASHED WELD TACKS	2	UNLESS
2182.37	UPPER TO FPM ON DANGER AREA, 8. LASHED WELD TACKS	2	UNLESS
2182.38	UPPER TO FPM ON DANGER AREA, 8. LASHED WELD TACKS	2	UNLESS
2182.39	UPPER TO FPM ON DANGER AREA, 8. LASHED WELD TACKS	2	UNLESS
2182.40	UPPER TO FPM ON DANGER AREA, 8. LASHED WELD TACKS	2	UNLESS
2182.41	UPPER TO FPM ON DANGER AREA, 8. LASHED WELD TACKS	2	UNLESS
2182.42	UPPER TO FPM ON DANGER AREA, 8. LASHED WELD TACKS	2	UNLESS
2182.43	UPPER TO FPM ON DANGER AREA, 8. LASHED WELD TACKS	2	UNLESS
2182.44	UPPER TO FPM ON DANGER AREA, 8. LASHED WELD TACKS	2	UNLESS
2182.45	UPPER TO FPM ON DANGER AREA, 8. LASHED WELD TACKS	2	UNLESS
2182.46	UPPER TO FPM ON DANGER AREA, 8. LASHED WELD TACKS	2	UNLESS
2182.47	UPPER TO FPM ON DANGER AREA, 8. LASHED WELD TACKS	2	UNLESS
2182.48	UPPER TO FPM ON DANGER AREA, 8. LASHED WELD TACKS	2	UNLESS
2182.49	UPPER TO FPM ON DANGER AREA, 8. LASHED WELD TACKS	2	UNLESS
2182.50	UPPER TO FPM ON DANGER AREA, 8. LASHED WELD TACKS	2	UNLESS
2182.51	UPPER TO FPM ON DANGER AREA, 8. LASHED WELD TACKS	2	UNLESS
2182.52	UPPER TO FPM ON DANGER AREA, 8. LASHED WELD TACKS	2	UNLESS
2182.53	UPPER TO FPM ON DANGER AREA, 8. LASHED WELD TACKS	2	UNLESS
2182.54	UPPER TO FPM ON DANGER AREA, 8. LASHED WELD TACKS	2	UNLESS
2182.55	UPPER TO FPM ON DANGER AREA, 8. LASHED WELD TACKS	2	UNLESS
2182.56	UPPER TO FPM ON DANGER AREA, 8. LASHED WELD TACKS	2	UNLESS
2182.57	UPPER TO FPM ON DANGER AREA, 8. LASHED WELD TACKS	2	UNLESS
2182.58	UPPER TO FPM ON DANGER AREA, 8. LASHED WELD TACKS	2	UNLESS
2182.59	UPPER TO FPM ON DANGER AREA, 8. LASHED WELD TACKS	2	UNLESS
2182.60	UPPER TO FPM ON DANGER AREA, 8. LASHED WELD TACKS	2	UNLESS
2182.61	UPPER TO FPM ON DANGER AREA, 8. LASHED WELD TACKS	2	UNLESS
2182.62	UPPER TO FPM ON DANGER AREA, 8. LASHED WELD TACKS	2	UNLESS
2182.63	UPPER TO FPM ON DANGER AREA, 8. LASHED WELD TACKS	2	UNLESS
2182.64	UPPER TO FPM ON DANGER AREA, 8. LASHED WELD TACKS	2	UNLESS
2182.65	UPPER TO FPM ON DANGER AREA, 8. LASHED WELD TACKS	2	UNLESS
2182.66	UPPER TO FPM ON DANGER AREA, 8. LASHED WELD TACKS	2	UNLESS
2182.67	UPPER TO FPM ON DANGER AREA, 8. LASHED WELD TACKS	2	UNLESS
2182.68	UPPER TO FPM ON DANGER AREA, 8. LASHED WELD TACKS	2	UNLESS
2182.69	UPPER TO FPM ON DANGER AREA, 8. LASHED WELD TACKS	2	UNLESS
2182.70	UPPER TO FPM ON DANGER AREA, 8. LASHED WELD TACKS	2	UNLESS
2182.71	UPPER TO FPM ON DANGER AREA, 8. LASHED WELD TACKS	2	UNLESS
2182.72	UPPER TO FPM ON DANGER AREA, 8. LASHED WELD TACKS	2	UNLESS
2182.73	UPPER TO FPM ON DANGER AREA, 8. LASHED WELD TACKS	2	UNLESS
2182.74	UPPER TO FPM ON DANGER AREA, 8. LASHED WELD TACKS	2	UNLESS
2182.75	UPPER TO FPM ON DANGER AREA, 8. LASHED WELD TACKS	2	UNLESS
2182.76	UPPER TO FPM ON DANGER AREA, 8. LASHED WELD TACKS	2	UNLESS
2182.77	UPPER TO FPM ON DANGER AREA, 8. LASHED WELD TACKS	2	UNLESS
2182.78	UPPER TO FPM ON DANGER AREA, 8. LASHED WELD TACKS	2	UNLESS
2182.79	UPPER TO FPM ON DANGER AREA, 8. LASHED WELD TACKS	2	UNLESS
2182.80	UPPER TO FPM ON DANGER AREA, 8. LASHED WELD TACKS	2	UNLESS
2182.81	UPPER TO FPM ON DANGER AREA, 8. LASHED WELD TACKS	2	UNLESS
2182.82	UPPER TO FPM ON DANGER AREA, 8. LASHED WELD TACKS	2	UNLESS
2182.83	UPPER TO FPM ON DANGER AREA, 8. LASHED WELD TACKS	2	UNLESS
2182.84	UPPER TO FPM ON DANGER AREA, 8. LASHED WELD TACKS	2	UNLESS
2182.85	UPPER TO FPM ON DANGER AREA, 8. LASHED WELD TACKS	2	UNLESS
2182.86	UPPER TO FPM ON DANGER AREA, 8. LASHED WELD TACKS	2	UNLESS
2182.87	UPPER TO FPM ON DANGER AREA, 8. LASHED WELD TACKS	2	UNLESS
2182.88	UPPER TO FPM ON DANGER AREA, 8. LASHED WELD TACKS	2	UNLESS
2182.89	UPPER TO FPM ON DANGER AREA, 8. LASHED WELD TACKS	2	UNLESS
2182.90	UPPER TO FPM ON DANGER AREA, 8. LASHED WELD TACKS	2	UNLESS
2182.91	UPPER TO FPM ON DANGER AREA, 8. LASHED WELD TACKS	2	UNLESS
2182.92	UPPER TO FPM ON DANGER AREA, 8. LASHED WELD TACKS	2	UNLESS
2182.93	UPPER TO FPM ON DANGER AREA, 8. LASHED WELD TACKS	2	UNLESS
2182.94	UPPER TO FPM ON DANGER AREA, 8. LASHED WELD TACKS	2	UNLESS
2182.95	UPPER TO FPM ON DANGER AREA, 8. LASHED WELD TACKS	2	UNLESS
2182.96	UPPER TO FPM ON DANGER AREA, 8. LASHED WELD TACKS	2	UNLESS
2182.97	UPPER TO FPM ON DANGER AREA, 8. LASHED WELD TACKS	2	UNLESS
2182.98	UPPER TO FPM ON DANGER AREA, 8. LASHED WELD TACKS	2	UNLESS
2182.99	UPPER TO FPM ON DANGER AREA, 8. LASHED WELD TACKS	2	UNLESS
2182.100	UPPER TO FPM ON DANGER AREA, 8. LASHED WELD TACKS	2	UNLESS

SHIP TYPE: **ANCHORAGE**

81 M. ANCHOR HANDLING/SUPPLY VESSEL

TITLE: **GENERAL ARRANGEMENT**

OWNER: PACIFIC OFFSHORE MARINE PTE. LTD.
DESIGNER: WAPATSLA
CLASSIFICATION SOCIETY: ABS

SCALE: 1:200
C4238/G-1

DATE: 15.07.08
ISSUED: 15.07.08

REVISIONS:

Access door in the bulkhead is to be provided with a notice affixed to each such closing appliance to the effect that it is to be kept closed.



Weightlift door to comply with Rules 3-2.7.1.