

POSH EAGLE



16,300 BHP/ 205 TBP AHT/ DP1/Ocean Towing/ Salvage Tug Call Sign: 9V9966

Principal Particulars

| | |
|----------------|--------------|
| Flag | : Singapore |
| Year Built | : 2013 |
| Place Built | : JMU, Japan |
| Length Overall | : 75.27 m |
| Length B.P. | : 65.00 m |
| Beam Overall | : 18.00 m |
| Depth Moulded | : 8.00 m |
| Design Draft | : 6.00 m |
| IMO No. | : 9658252 |
| Official No. | : 397799 |

Classification

Bureau Veritas I ✕ Hull ✕ Mach Offshore Support Vessel (Supply) Oil Recovery Tug Fire-Fighting 1 Unrestricted Navigation
✕ AUT-UMS, Mon-Shaft, ✕ ALP, Inwatersurvey, ✕ Dynapos AM/AT

Capacities

| | |
|-----------------|---|
| Gross Tonnage | : 3513 tons |
| Net Tonnage | : 1053 tons |
| Deadweight | : 3369 tons |
| Heavy Fuel Oil | : 2200 m ³ |
| Diesel Fuel Oil | : 300 m ³ |
| Potable Water | : 300 m ³ |
| Lube Oil | : 40 m ³ |
| Foam Capacity | : 20 m ³ |
| Dispersant | : 18 m ³ |
| Max Speed | : 15 knots |
| Endurance | : 45 days towing at sea |
| Deck Loads | : From frame -3 to 16: 10 tons/m ² : From frame 16 to 49: 5 tons/m ² |
| Deck Space | : 450 m ² |

Accommodation

| | |
|------------------|----------------------|
| One Man Cabin | : 16 x 1 berth cabin |
| Two Men Cabin | : 5 x 2 berths cabin |
| Total Complement | : 26 persons |

DP Class 1 System

CONVERTEAM Independent Joystick (IJS) ADP-1 system

Machinery & Equipment

| | |
|---------------------------------|--|
| Main Engines | : 2x Wartsila 12V32 Total output 16,300BHP |
| Generators | : Main generators: 2 x 400kW, 420 V, 50Hz; Shaft generators 2 x 1200 kW, 420V, 50Hz; Emergency generator: 60kW, 420V, 50Hz |
| Steering gear | : RR, 2 x independent, electro-hydraulic rotary type |
| Propellers | : 2 x Controllable Pitch Propellers, 4 blade in nozzles |
| Rudders | : Rolls-Royce, 2 x high lift flap |
| Bollard Pull | : 205 tons |
| Bow Thruster | : Electric motor driven tunnel type, 12 tons, 800kW |
| Stern Thruster | : Electric motor driven tunnel type, 10 tons |
| Deck Crane | : Electro-hydraulic, knuckle type, 5 tons@ 16m radius |
| Ballast water treatment system: | Ultra violet with filter type, treatment capacity 60m ³ /hr |

Tow/Anchor handling Equipment

| | |
|----------------------|--|
| Tow/AH Winch | : 1 x Fukushima, DDW-350H-4M, double drum waterfall type, brake holding capacity @ 450 tons (1st layer) |
| Tow/AH drum capacity | : 76 mm x 1500m, both drums with spooling device |
| Spare wire reels | : 2 x 76mm x 1500m @10 tons (1st layer) |
| Tugger Winch | : 2 x Electro-hydraulic, each 20 tons @ 15m/min |
| Windlass | : 1 x Fukushima, Electro-hydraulic, 2 x cable lifters, 2 x warping ends, 2 x mooring drums. 15 tons x 9m/min |
| Shark Jaw | : 2 x Karm fork, 450 tons SWL each |
| Towing Pin | : 2 pair x Karmoy winch, 200 tons SWL each |
| Capstans | : 2 x Electro-hydraulic each 15 tons @ 15m/min |
| Stern Roller | : 1 x 450 tons SWL, B 5m x Diam. 3m |

Life Saving Equipment

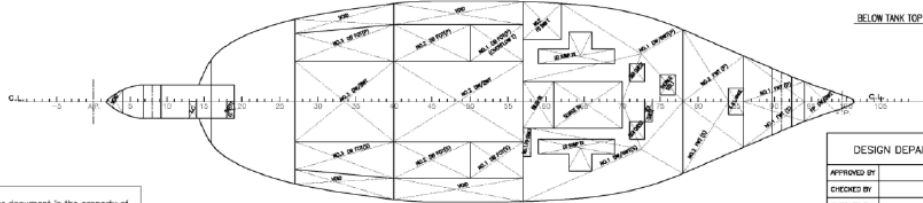
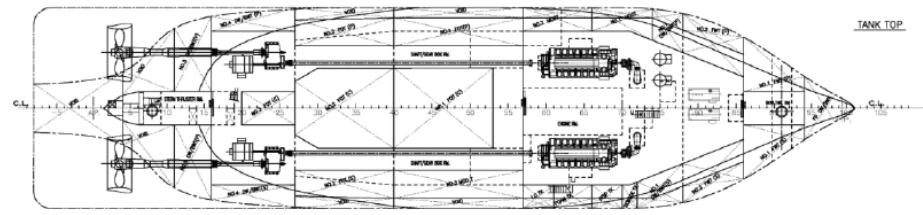
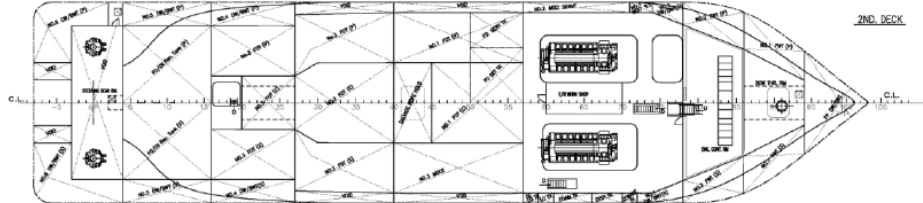
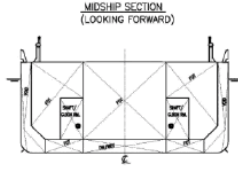
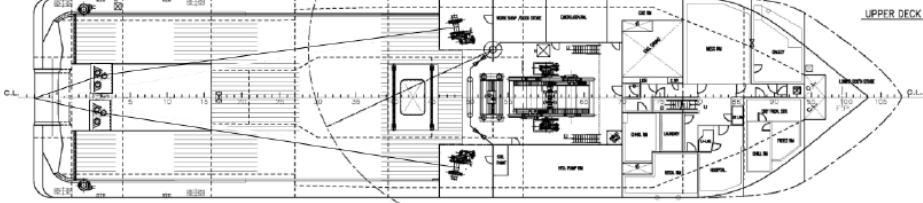
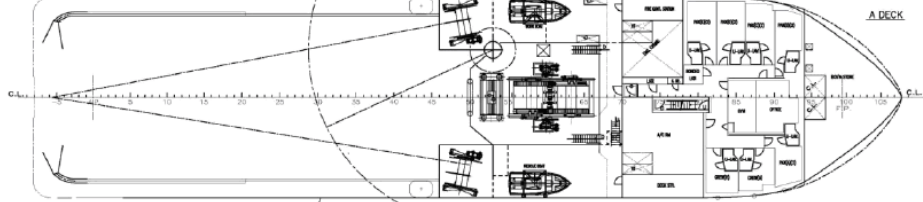
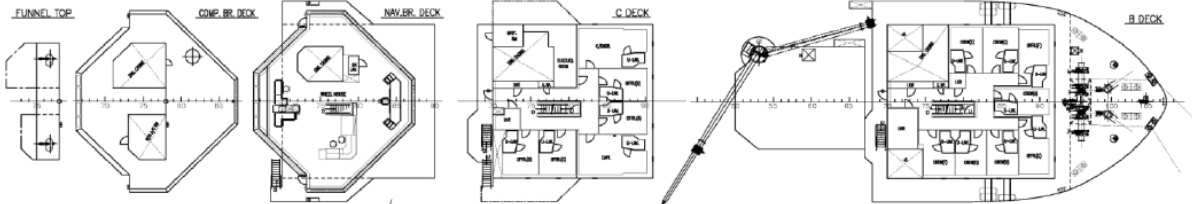
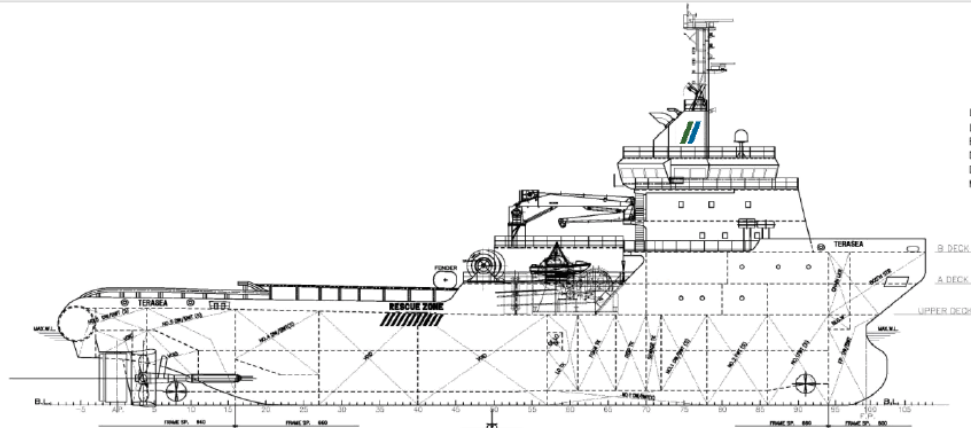
| | |
|-------------|--|
| Rescue Boat | : 6 person capacity on single point hanging davit type |
| Work Boat | : 6 person capacity with launch davit |
| Life rafts | : 6 x 16 person capacity |

FiFi 1 System / Dispersant

| | |
|-----------------------|---|
| Fire Pumps | : Two seawater centrifugal pumps, each capacity of 1791m ³ /hr @ pump speed of 1800RPM |
| Water/Foam Monitor | : Two dual foam/water monitor each capacity of 1200 m ³ /hr at 11.5 bars |
| Air/Foam Liquid Tank: | 24m ³ |
| Spray Boom | : 2 x 6m aluminum boom with nozzle |
| Oil Dispersant Tank | : 18m ³ |

PRINCIPAL PARTICULARS

LENGTH(O.A) APPROX. 75.3m
 LENGTH(B.P) 65.00m
 BREADTH(MLD) 18.00m
 DEPTH(MLD) 8.10m
 DESIGNED DRAFT(MLD) 6.00m
 MAX. SUMMER DRAFT(MLD) 6.60m



This drawing or document is the property of Universal Shipbuilding Corp. and must in no case wholly or partially be copied, shown or given to a third party without the expressed consent of Universal Shipbuilding Corp.

| | | |
|-------------------|------------------------------------|--|
| DESIGN DEPARTMENT | HULL No. SNO.0074/75 | 16,300 BHP OCEAN TOWING/SALVAGE TUG |
| APPROVED BY | | |
| CHECKED BY | | |
| DESIGNED BY | | |
| DRAWN BY | | |
| DATE OF DRAWING | | |
| SCALE 1/200 | Universal Shipbuilding Corporation | DWG. NO. 4011100 REV. 0 |

GENERAL ARRANGEMENT
POSH
 Excellence Through Safety

Particulars given herein are believed to be correct but not guaranteed. Owners reserve the right to amend specifications with out notification.