

## POSH SINCERO



### 3,300 DWT/ Platform Supply Vessel (PSV)/ DP 2 Call sign: 3EC07

**Class Notation** ABS A1, Fire Fighting Vessel Class 1, Offshore Support Vessel, AMS, ACCU, DPS-2, HAB(WB), TCM, HLC (2.8, Mud Tanks 1, 2, 3, 4 & 5)

#### Principal Particulars

Flag	Panama
Year Built	2010
Place Built	Bharati Shipyard Limited
Design Draft	5.00 m
Max Draft	5.83 m
Gross Tonnage	2,176
Net Tonnage	691
Deadweight (Max Draft)	3,134.0 T @ 5.83 m
Displacement	4,987 T
IMO No.	9499307
Design	Rolls-Royce UT 755 LN

#### Dimensions

Length Overall	73.60 m
Beam Overall	16.00 m
Depth Moulded	7.00 m

#### Performance

Max Speed	12.00 kts
Economical Speed	10.00 kts

\* Subject to actual weather and operating conditions

#### Cargo Deck

Deck Cargo Area	680 m <sup>2</sup>
Deck Cargo Dimension	51.0 m x 13.3 m
Deck Cargo Capacity	1,500.0 T
Deck Strength	5.0 T/m <sup>2</sup>
Reefer Point	4 x 440V

#### Capacities

Fuel Tank	950 m <sup>3</sup>
Fresh Water	815 m <sup>3</sup>
Drill Water *	1,340 m <sup>3</sup> (shared with ballast water)
Ballast Water *	1,340 m <sup>3</sup> (shared with drill water)
Mud Tank *	990 m <sup>3</sup> (shared with brine)
Brine Tank *	396 m <sup>3</sup> (shared with mud)
Dry Bulk Tank	320 m <sup>3</sup> (in 5 tanks)
Base Oil	210 m <sup>3</sup>

\* Indicates tanks with shared capacity

#### Discharging Rates

Drill Water/Pump	1 x 200 m <sup>3</sup> /hr @ 9 bar
Fresh Water/Pump	1 x 200 m <sup>3</sup> /hr @ 9 bar
Fuel/Pump	1 x 200 m <sup>3</sup> /hr @ 9 bar
Brine/Pump	1 x 75 m <sup>3</sup> /hr @ 18 bar
Liquid Mud/Pump	2 x 75 m <sup>3</sup> /hr @ 18 bar
Dry Bulk Tank	2 x 75 m <sup>3</sup> /hr @ 85 m head
Base Oil/Pump	1 x 150 m <sup>3</sup> /hr @ 9 bar

#### Accommodation

1 – Berth Cabins	5
2 – Berth Cabins	6
6 – Berth Cabins	2
Total (POB)	29

#### Machinery & Equipment

Main Engine	Caterpillar 6M25, 2 x 1,980 kW
Shaft Generator	MAN, 2 x 1,400 kW
Auxiliary Generator	MAN, 2 x 250 kW
Emergency Generator	MAN, 1 x 72 kW

#### Thruster & Propulsion

Propeller	Rolls-Royce 2 x CPP with nozzle
Bow Thruster	Rolls-Royce TT1850 DPN CP, 2 x 590 kW
Stern Thruster	Rolls-Royce TT1650 DPN CP, 2 x 590 kW

#### Deck Crane

Fixed Crane	SWL 3.0 T @ 16.0 m radius
-------------	---------------------------

#### Mooring Equipment

Anchor	2 x SPEK Type Anchor; 2,850 kg each
Anchor Windlass	8.0 T @ 10.5 m/min
Tugger Winch	2 x 10.0 T each @ 0-19 m/min
Capstan	2 x 8.0 T each @ 0-16 m/min

#### Dynamic Positioning System

DP Class	DP 2, Rolls Royce ICON
References	2 x DGPS + 1 Cyscan
MRU	2

#### Fire Fighting and Rescue

Firefighting System	FiFi 1
FiFi Pump	2 x 1,200 m <sup>3</sup> /hr
FiFi Monitor	2 x 1,200 m <sup>3</sup> /hr
Spray Boom	Nil
Dispersion Capacity	Nil
Foam Capacity	Nil
Rescue Boat	1 x 6 man rigid hull waterjet FRC, 40 hp, ≥8 kts
Life Raft	2 x 25-man, 2 x 20-man, 2 x 12-man
Life Buoy	8
Life Jacket	34
Immersion Suit	34

## CARGO CAPACITY PLAN

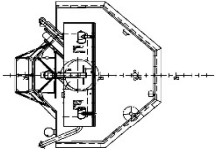
Tank No.	Volume m <sup>3</sup>	Fuel m <sup>3</sup>	Fresh Water m <sup>3</sup>	Ballast Water m <sup>3</sup>	Mud m <sup>3</sup>	Brine m <sup>3</sup>	Drill Water m <sup>3</sup>	Dry Bulk m <sup>3</sup>	Base Oil m <sup>3</sup>
		SG 0.900	SG 1.000	SG 1.025	SG 2.800	SG 2.500	SG 1.000	SG 2.500	SG 0.830
1	133.40			136.70			133.40		
1A	61.60			63.10			61.60		
2	124.10		124.10						
3	112.00		112.00						
4	62.40			64.00			62.40		
5	45.40			46.60			45.40		
6	155.10	139.60							
7	126.00	113.40							
8	152.90	137.70							
9	152.90	137.70							
10	105.50								87.5
11	105.50								87.5
12	139.70	125.70							
13	139.70	125.70							
14	65.00		65.00						
15	66.00		66.00						
16	33.40		33.40						
17	33.40		33.40						
18	22.20		22.20						
19	99.10			101.60	247.80	247.80	99.10		
20	99.10			101.60	247.80	247.80	99.10		
21	99.30			101.80	248.30	248.30	99.30		
21A	99.30				248.30				
22	99.30			101.80	248.30	248.30	99.30		
22A	99.30				248.30				
23	99.30				248.30				
24	99.30				248.30				
25	99.30				248.30				
26	99.30				248.30				
27	202.10		202.10	207.10			202.10		
27A	173.20		173.20	177.50			173.20		
28	109.90			112.70			109.90		
29	163.40			167.50			163.40		
30	41.90	37.70							
31	41.90	37.70							
44	64.00							138.50	
45	64.00							138.50	
46	64.00							138.50	
47	64.00							138.50	
49	64.00							138.50	
51	10.80	9.70							
<b>SUM</b>		<b>961.0</b>	<b>831.4</b>	<b>1348.3</b>	<b>992.8</b>	<b>396.9</b>	<b>1348.2</b>	<b>320.6</b>	<b>210.8</b>

Particulars given herein are believed to be correct but not guaranteed. Owners reserve the rights to amend specifications without notification.

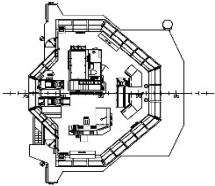


**Rolls-Royce**  
**UT-Design™**  
**UT 755 LN**

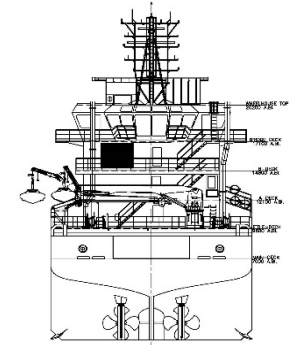
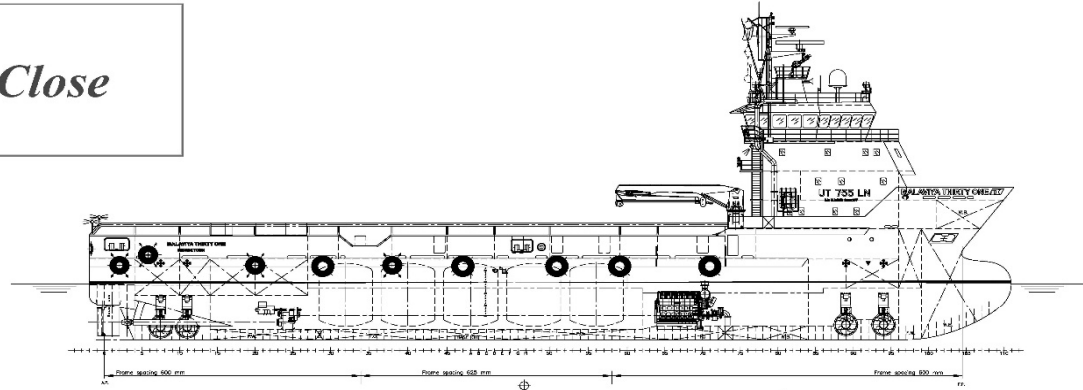
*Close*



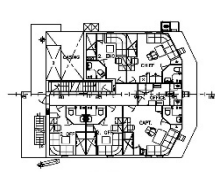
TOP WHEELHOUSE



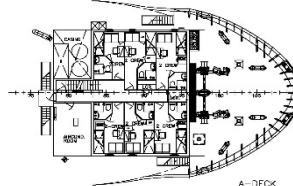
BRIDGE DECK



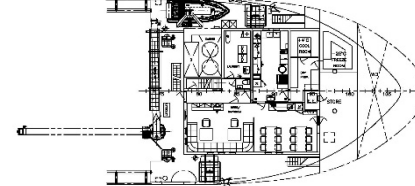
AF-1 VIEW



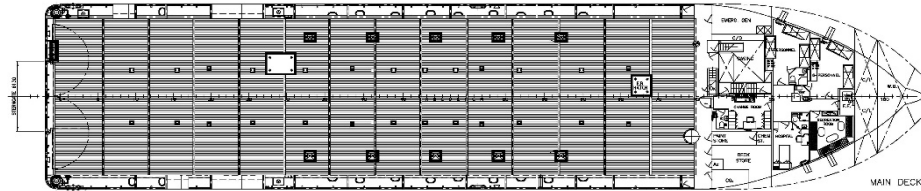
B-DECK



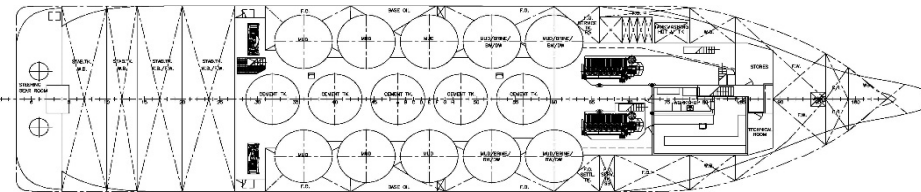
A-DECK



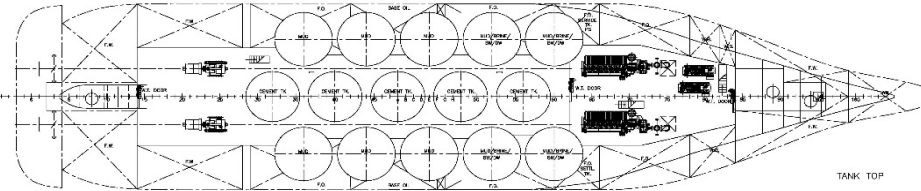
FORECASTLE DECK



MAIN DECK



TWEEN DECK



TANK TOP

**MAIN PARTICULARS**

L.O.A.....	APPROX. 73.60 m
L.P.P.....	68.30 m
BREADTH MLD.....	16.00 m
DEPTH MAIN DK.....	7.00 m
DESIGN DRAFT.....	5.00 m
MAX DRAFT.....	APPROX. 5.90 m
COMPLEMENT	17 CREW + 12 S.P.
	TOTAL = 29 PERSONS

[AS FITTED]

REV.	DESCRIPTION	DATE	MOD. BY	CHKD. BY
BHARATI SHIPYARD LIMITED		CLIENT	SHIP PLATFORM SUPPLY VESSEL	
MALAYYA THIRTY ONE		TITLE		
IMO.NO.9499307		GENERAL ARRANGEMENT		
SCALE	DRAWN	APPROVALS	YARD NUMBER	DRAWING NUMBER
1:200	TRACES	DESIGNER	V/359-360	V/359-708
	CHECKED	NAVAL	DATE: 27/10/07	SHEET 1 OF 1
	SEC. HEAD	CLASS	COPYRIGHT - THIS DOCUMENT/DRAWING IS THE PROPERTY OF BHARATI SHIPYARD LTD & CONTAINS CONFIDENTIAL INFORMATION WHICH MUST NOT BE COPIED WHOLLY OR IN PART NOR DISCLOSED TO ANY PERSON OR USED IN ANY MANNER WITHOUT BHARATI SHIPYARD LIMITED'S PRIOR WRITTEN PERMISSION.	
Rev.	Date	Reason for Issue	Made by	CHKD. BY
CU				
CU2				
TITLE		UT 755 LN		
GENERAL ARRANGEMENT				
Rolls-Royce		1:200 A1 067203 - 101 - 001 NIL		
UT-Design™		Scale	Format	PROJECT NO.

This manufacturer's information is the property of Rolls-Royce Marine AG. All rights reserved. This information is confidential and its disclosure to any third party without the prior written consent of Rolls-Royce Marine AG is prohibited. The information is provided for your information only and is not intended to constitute an offer or a contract. The information is provided for your information only and is not intended to constitute an offer or a contract. The information is provided for your information only and is not intended to constitute an offer or a contract.