

POSH KITTIWAKE



3,300 DWT/ Platform Supply Vessel (PSV)/ DP 2 Call sign: HPAA

Class Notation

ABS A1, FIRE FIGHTING VESSEL CLASS 1, OFFSHORE SUPPORT VESSEL, (E), SPS + RW + AMS. + ACCU. + DPS-2

Principal Particulars

Flag	Panama
Year Built	2011
Place Built	Fujian Southeast Shipyard, China
Design Draft	6.20 m
Max Draft	6.60 m
Gross Tonnage	2,899.0 T
Net Tonnage	869.0 T
Deadweight (Max Draft)	3,351.27 T @ 6.20 m draft
IMO No.	9617765
Design	75m PSV KCM Design from Khiam Chuan

Dimensions

Length Overall	75.00 m
Beam Overall	17.25 m
Depth Moulded	8.00 m

Performance

Max Speed	12.00 kts
Economical Speed	10.00 kts

* Subject to actual weather and operating conditions

Cargo Deck

Deck Cargo Area	700.0 m ²
Deck Cargo Dimension	51.0 m x 13.3 m
Deck Cargo Capacity	1200.0 T
Deck Strength	5.5T/m ²
Reefer Points	6 (3 x 415v, 3 x 220v)

Capacities

Fuel Tank	892.3 m ³
Fresh Water	539.1 m ³
Drill Water *	1,611.6 m ³ (Shared with ballast water)
Ballast Water *	1,611.6 m ³ (Shared with drill water)
Mud Tank *	790.0 m ³ (Shared with brine)
Brine Tank *	790.0 m ³ (Shared with mud)
Dry Bulk Tank	222.4 m ³ (in 4 tanks)

* Indicates tanks with shared capacity

Discharging Rates

Drill Water/Pump	1 x 100m ³ /hr@80m head
Fresh Water/Pump	1 x 100m ³ /hr@85m head
Fuel/Pump	2 x 130m ³ /hr@70m head
Brine/Pump	1 x 75m ³ /hr@90m head
Liquid mud/Pump	1 x 75m ³ /hr@90m head
Dry Bulk Tank	2 x 20 m ³ /min@50 m head

Accommodation

1 – Berth Cabins	10
2 – Berth Cabins	20
Total (POB)	50

Machinery & Equipment

Main Engine	Niligata 2 x 2,238 kW each
Shaft Generators	Leroy 2 x 1,000 kW each
Diesel Generators	Caterpillar 3 x 450 kW each
Emergency Generator	Caterpillar 1 x 80 kW each

Thruster & Propulsion

Azimuth Thruster/Propellers	Niligata 2 x Z-peller 360 degree
Bow Thruster	Kawasaki 2 x 650 kw / 871 BHP

Deck Crane

Fixed Crane	SWL 3.0 T @ 10.0 m radius
-------------	---------------------------

Mooring Equipment

Anchors	2 x HHP Stockless Anchor; 2000 kg each
Anchor Windlass	13.0 T @ 18.0 m/min
Tugger Winch	Mentrade Marine 2 x 10.0 T each
Capstans	2 x 10.0 T each

Dynamic Positioning System

DP Class	DP 2 System Kongsberg
References	2 x DGPS + 1 x Laser Fanbeam
MRU	2

Fire Fighting and Rescue

Firefighting System	FiFi 1
FiFi Pump	2 x 1,200.0 m ³ /hr
FiFi Monitors	1 x 300.0 m ³ /hr
Spray Booms	2 x 6.0 m, Fixed Nozzle
Dispersion Capacity	12.57 m ³
Foam Capacity	12.57 m ³
Rescue Boat	1 x 6 man/semi-rigid/40hp
Life Rafts	6 x 25 man
Life Buoys	8
Life Jackets	63

CARGO CAPACITY PLAN

Drill Water/Ballast Water (Spgr 1.025)	
Compartment	Volume 100% m ³
W.B./D.W. FP TK(C)	98.5
NO.1 WB DW DB TK(C)	83.4
NO.2 WB DW WG TK(P)	79.9
NO.2 WB DW WG TK(S)	79.9
NO.3 WB DW DB TK(P)	43.3
NO.3 WB DW DB TK(S)	43.3
NO.4 WB DW WG TK(P)	103.7
NO.4 WB DW WG TK(S)	95.3
NO.5 WB DW DB TK(P)	28.6
NO.5 WB DW DB TK(S)	28.6
NO.6 WB DW WG TK(P)	72
NO.6 WB DW WG TK(S)	72
NO.7 WB DW DB TK(C)	51.5
NO.8 WB DW WG TK(P)	88.8
NO.8 WB DW WG TK(S)	88.8
NO.9 WB DW DB TK(C)	73
NO.10 WB DW WG TK(P)	77.1
NO.10 WB DW WG TK(S)	77.1
NO.11 WB DW DB TK(C)	56.7
NO.12 WB DW WG TK(P)	55
NO.12 WB DW WG TK(S)	55
NO.13 WB DW AP TK(C)	79.5
NO.14 WB DW AP TK(P)	40.3
NO.14 WB DW AP TK(S)	40.3
SUM	1611.6

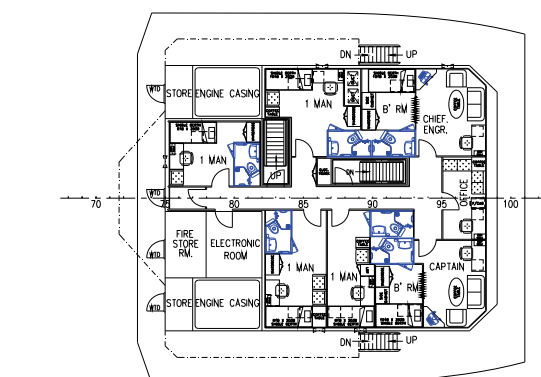
Fresh Water (Spgr 1.000)	
Compartment	Volume 100% m ³
NO.1 FW WG TK(P)	58.8
NO.1 FW WG TK(S)	58.8
NO.2 FW WG TK(P)	132.7
NO.2 FW WG TK(S)	132.7
NO.3 FW DB TK(C)	65.9
NO.4 FW WG TK(P)	45.1
NO.4 FW WC TK(S)	45.1
SUM	539.1

Cement (Spgr 1.380)	
Compartment	Volume 100% m ³
NO.1 CEMENT TK.S	58
NO.2 CEMENT TK.S	58
NO.3 CEMENT TK.S	58
NO.4 CEMENT TK.S	48.3
SUM	222.3

Mud (Spgr 2.500)	
Compartment	Volume 100% m ³
NO.1 MUD BRINE TK(P)	184.2
NO.1 MUD BRINE TK(S)	184.2
NO.2 MUD BRINE TK(P)	127.8
NO.2 MUD BRINE TK(S)	127.8
SUM	624.0

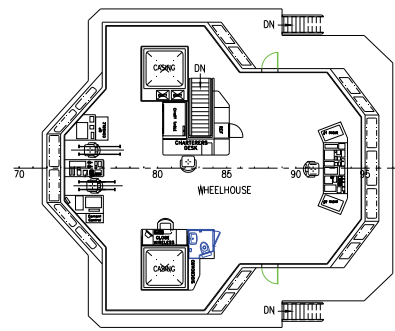
Fuel Oil (Spgr 0.850)	
Compartment	Volume 100% m ³
FO DAY TK(P)	24.1
FO DAY 1X(S)	24.1
NO.1 FO TK(C)	105.9
NO.2 10 TK(P)	88
NO.2 FO TK(S)	73.7
NO.3 FO TK(P)	157.4
NO.3 FO TK(S)	157.4
NO.4 FO TK(C)	87.1
NO.5 FO TK(P)	78.6
NO.5 FO TK(S)	78.6
NO.6 FO TK(C)	157.4
OVER FLOW TK(C)	17.5
SUM	1049.8

Tank Name	
Compartment	Volume 100% m ³
DIRTY OIL TK(P) (Spgr 0.900)	11.9
BILGE HOLDING TK(S) (Spgr 0.900)	11.9
FOAM TK(P) (Spgr 1.000)	12.6
DETERGENT TK(S)(Spgr 1.000)	12.6
HYD. OIL TK(P) (Spgr 0.924)	7
LUB. OIL TK(P) (Spgr 0.924)	5.8
LUB. OIL TK(S) (Spgr 0.924)	12.8
SUM	74.6

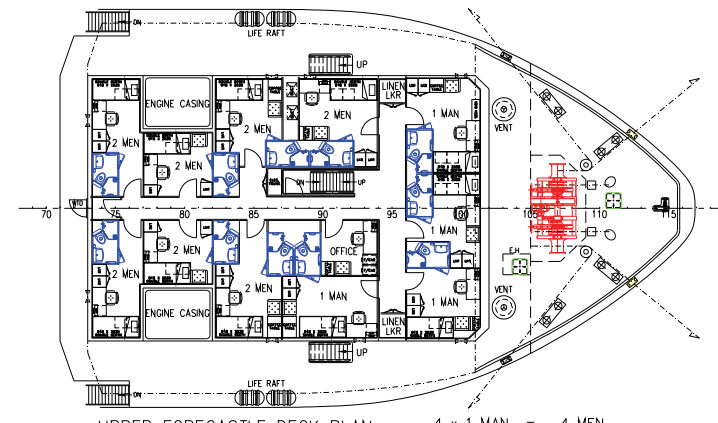


OFFICER DECK

6 x 1 MAN = 6 MEN
TOTAL = 6 MEN

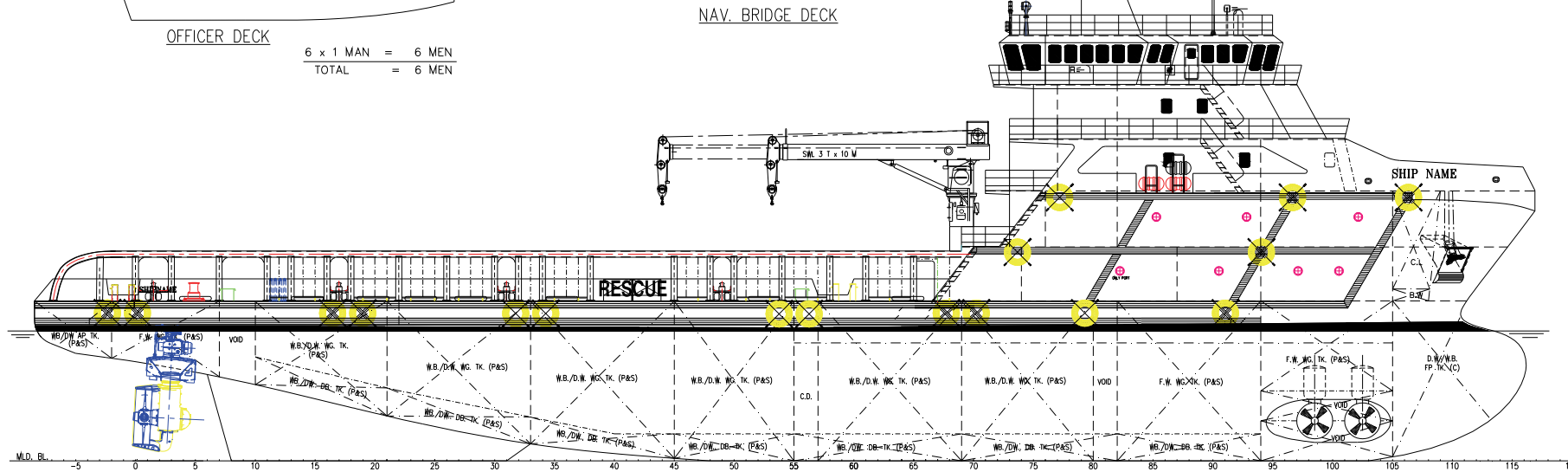


NAV. BRIDGE DECK

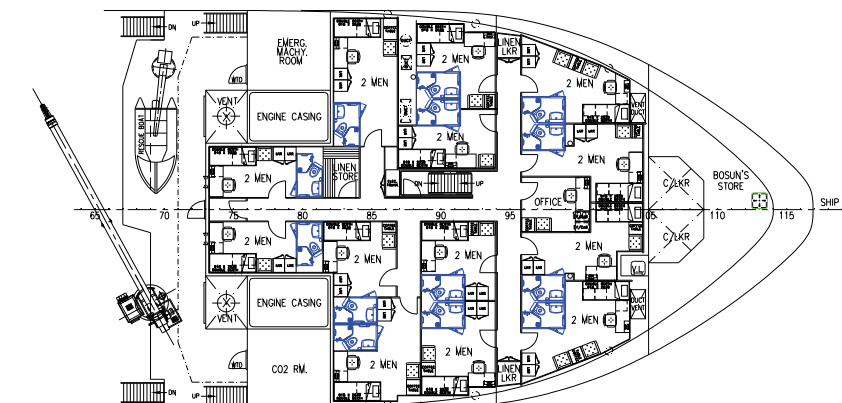


UPPER FORECASTLE DECK PLAN

4 x 1 MAN = 4 MEN
7 x 2 MEN = 14 MEN
TOTAL = 18 MEN

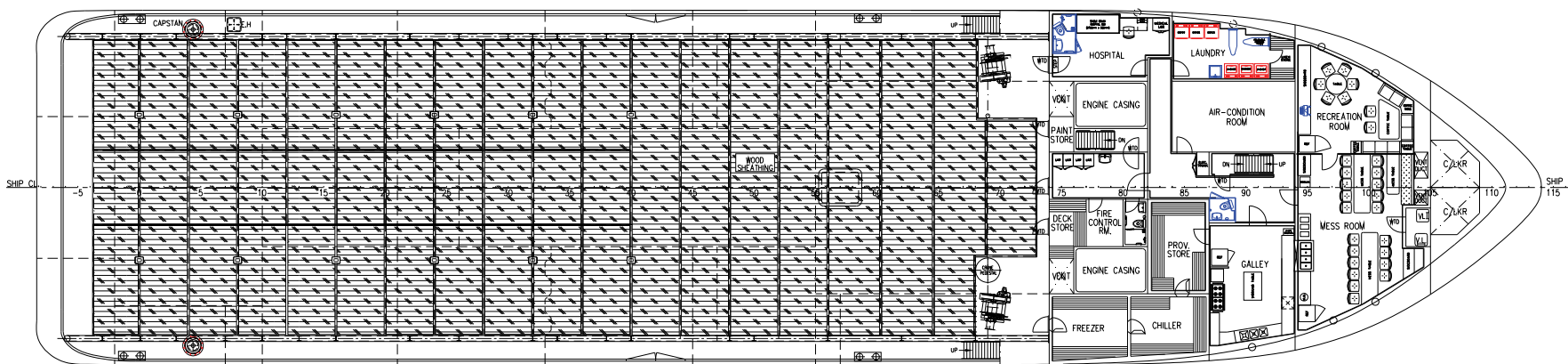


OUTBOARD PROFILE

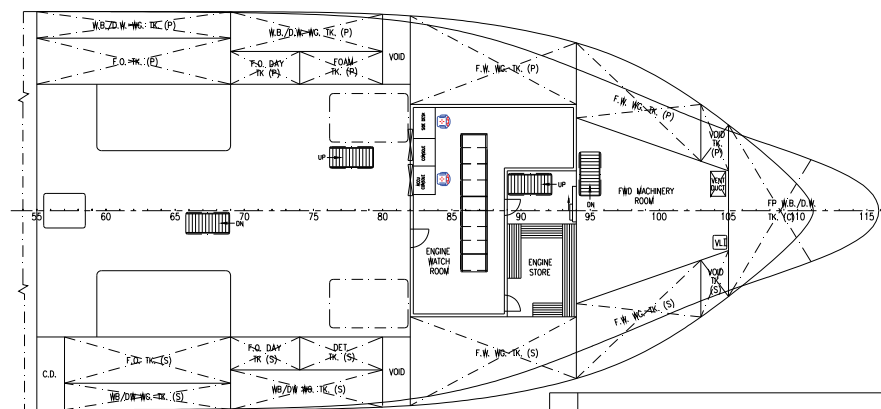


FORECASTLE DECK PLAN

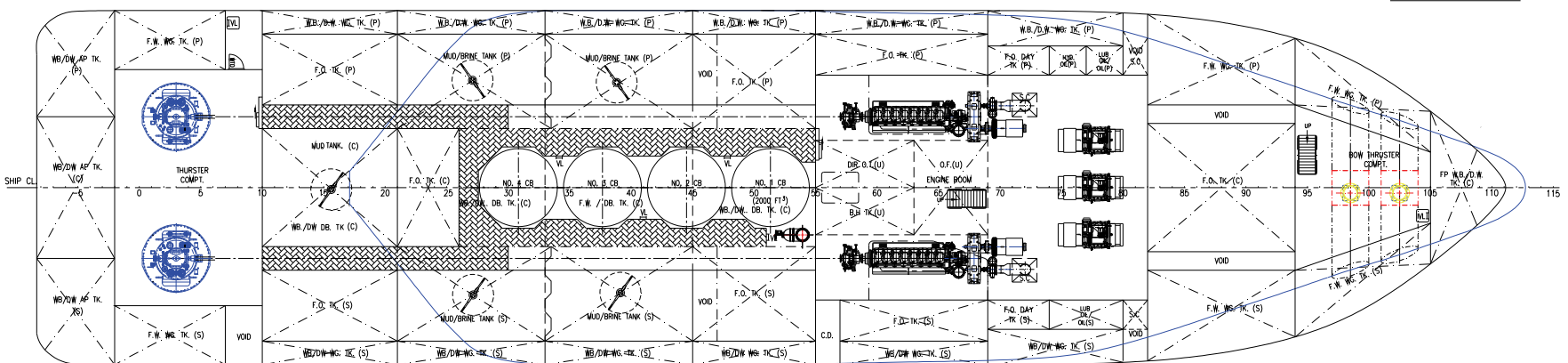
13 x 2 MEN = 26 MEN
TOTAL = 26 MEN



MAIN DECK PLAN



TWEEN DECK PLAN



BELOW DECK PLAN

PRINCIPAL DIMENSIONS

LENGTH (O.A.)	75,000 M
LENGTH (W.L.)	72,886 M
LENGTH (B.P.)	67,853 M
BEAM (M.L.D.)	17,250 M
DEPTH (M.L.D.)	8,000 M
MAX. DRAFT (M.L.D.)	6,600 M
TOTAL DWT	3000 TONS
FUEL OIL	1000 M ³
FRESH WATER	500 M ³
MUD / BRINE	600 M ³
CLEAR DECK AREA	700 M ²
DECK CARGO (DECK LOADING = 5.5T/M ²)	1200 TONS
DRY BULK TANKS (4x2000 FT ³ = 8000 FT ³)	226 M ³
MAIN PROPULSION	2 x 3000 PS
SPEED (TRIALS)	13.0 KNOTS
COMPLEMENT	50 MEN

12. CHANGE F. O. TK. (FR10-FR21) TO MUD TK.	XIEJIN	24/08/11
11. CHANGE FP #B. TK. TO FP #B./D.B. TK., SLIDING DOOR #RR.82 REMOVED	XIEJIN	24/02/11
10. AMENDED AS PER YARD & CLASS' COMMENTS	XIEJIN	27/12/10
9. AMENDED BY YARD	YARD	20/9/10
8. Amended as per yard comments.	hcKah	30/8/10
7. Re-arrangement of Accommodation as per yard comments.	hcKah	31/7/10
6. Re-arrangement of Engine Watch Room	hcKah	31/5/10
5. Electronic Rm & Fire Control Rm added as per yard comments.	hcKah	16/4/10
4. ADD O.F.(U) TANK FROM FR.63-FR.69 IN DOUBLE BOTTOM	XIEJIN	19.03.10
3. AMENDED AS PER YARD'S COMMENTS	XIEJIN	13.12.10
REV. DETAILS OF MODIFICATION	BY	DATE

KHIAM CHUAN MARINE PTE LTD
 15, HILLVIEW TERRACE, SINGAPORE 669226
 TEL: 67753383 (6 LINES) FAX: 67753788
 EMAIL: khiamchuan@kcm.com.sg

PROJECT				
75m PLATFORM SUPPLY VESSEL				
TITLE				
GENERAL ARRANGEMENT				
CLASSIFICATION		HULL NO. DN75-1		
DRAWN	CHECKED	SCALE	DRAWING NUMBER	REV.
hcKOH		1:150	KCM/Q623 - G1	12
08-01-10				

THIS DOCUMENT AND THE INFORMATION IT CONTAINS IS COPYRIGHT AND REMAINS THE PROPERTY OF KHIAM CHUAN MARINE PTE LTD. IT IS NOT TO BE COPIED IN WHOLE OR IN PART OR DISCLOSED TO ANY THIRD PARTY FOR ANY PURPOSE WHATSOEVER WITHOUT PRIOR WRITTEN CONSENT.