

POSH GANNET



4,100 DWT/ Platform Supply Vessel (PSV)/ DP 2 Call sign: HP6216

Class Notation ABS +A1(E) Offshore Support Vessel, Oil Recovery Capability Class I, Safety Standby Service Gr. B-(145), Fire Fighting Class 1, SPS+AMS +DPS-2

Principal Particulars

Flag	Panama
Year Built	2013
Place Built	Jingjiang Nanyang Shipyard, China
Design Draft	6.00 m
Max Draft	6.20 m
Gross Tonnage	3,553.0 T
Net Tonnage	1,066.0 T
Deadweight (Max Draught)	4,156.0 T @ 6.20 m
Displacement	6,761.0 T
IMO No.	9671979
Design	POET 1514

Dimensions

Length Overall	78.00 m
Beam Overall	18.60 m
Depth Moulded	07.80 m

Performance

Max Speed	12.00 kts
Economical Speed	10.00 kts

* Subject to actual weather and operating conditions

Cargo Deck

Deck Cargo Area	770.0 m ²
Deck Cargo Dimension	50.0 m x 15.0 m
Deck Cargo Capacity	1,200.0 T
Deck Strength	7.5 T/m ²
Reefer Points	4 (2 x 440v , 2 x 220v)

Total Capacities

Fuel Tank	1,117.0 m ³
Fresh Water	512.2 m ³
Drill Water *	2,542.7 m ³
Ballast Water *	2,542.7 m ³
Mud Tank *	720.9 m ³
Brine Tank *	892.0 m ³
Dry Bulk Tank	250.0 m ³

* Indicates tanks with shared capacity

Discharging Rates

Drill Water/Pump	1 x 100 m ³ /hr@80 m head
Fresh Water/Pump	1 x 100 m ³ /hr@80 m head
Fuel/Pump	1 x 100 m ³ /hr@80 m head
Brine/Pump	1 x 75 m ³ /hr@20 m head
Liquid mud/Pump	1 x 75 m ³ /hr@20 m head
Dry Bulk Tank	1 x 75 m ³ /hr@20 m head

Accommodation

1 – Berth Cabins	6
2 – Berth Cabins	6
4 – Berth Cabins	8
Total (POB)	50

Machinery & Equipment

Main Engine	Niigata 2 x 3,000 BHP
Diesel Generators	Caterpillar 4 x 640 kW (440V/3/60Hz)
Emergency Generator	Volvo 1 x 99 kW (440V/3/60Hz)

Thruster & Propulsion

Azimuth Thruster/Propellers	Niigata 2 x ZP-41A, Driven by main engine, Z drive
Bow Thruster	Kawasaki 2 x 680 kW

Deck Crane

Fixed Crane	SWL 5.0 T @ 12.0m radius
-------------	--------------------------

Mooring Equipment

Anchors	2 x SPEK Type Anchor; 2,850 kg each
Anchor Windlass	1 x 13.0 T each @ 0-12 m/min
Tugger Winch	Jebsen & Jessen 2 x 10.0 T each @ 12 m/min
Capstans	2 x 8.0 T each @ 0-12 m/min

Dynamic Positioning System

DP Class	DP 2 System Kongsberg Independent Joystick System
References	2 x DGPS + 1 x Cyscan system

Fire Fighting and Rescue

Firefighting System	FiFi 1
FiFi Pump	2 x 1,900 m ³ /hr
FiFi Monitors	1 x 1200 m ³ /hr
Spray Booms	2 x 6.0 m/Fixed Nozzle
Dispersant Capacity	39.2 m ³
Foam Capacity	39.2 m ³
Rescue Boat	2 x 15 man/rigid/124 hp
Life rafts	6 x 25 man
Life Buoys	12
Life Jackets	34

CARGO CAPACITY PLAN

Mud/Brine/R.O	
Compartment	Volume 100% m ³
NO.1 MUD/BRINE/R.O/NO.5 W.B/D.W (P)	119.701
NO.1 MUD/BRINE/R.O/NO.5 W.B/D.W (S)	119.701
NO.2 MUD/BRINE/R.O/NO.6 W.B/D.W (P)	88.109
NO.2 MUD/BRINE/R.O/NO.6 W.B/D.W (S)	88.109
NO.3 MUD/BRINE/R.O/NO.7 W.B/D.W (P)	64.55
NO.3 MUD/BRINE/R.O/NO.7 W.B/D.W (S)	64.55
NO.4 MUD/BRINE/R.O/NO.8 W.B/D.W (P)	88.109
NO.4 MUD/BRINE/R.O/NO.8 W.B/D.W (S)	88.109
SUM	720.938

Fresh Water Tanks (S.G. = 1.000t/m ³)	
Compartment	Volume 100% m ³
NO.1 POTABLE WATER (P)	79.823
NO.1 POTABLE WATER (S)	77.19
NO.2 POTABLE WATER (P)	129.23
NO.2 POTABLE WATER (S)	63.7
NO.3 POTABLE WATER (P)	97.3
NO.3 POTABLE WATER (S)	64.978
SUM	512.221

Fuel Oil Tank (S.G. = 0.9t/m ³)	
Compartment	Volume 100% m ³
NO.1 F.O T (P)	52.885
NO.1 F.O T (S)	48.892
NO.3 F.O T	96.117
NO.4 F.O T (P)	78.158
NO.4 F.O T (S)	78.158
NO.5 F.O T	132.119
F.O.D TANK (P)	17.755
F.O.D TANK (S)	17.755
SUM	521.839

Cargo Oil Tank (S.G. = 0.9t/m ³)	
Compartment	Volume 100% m ³
NO.2 C.F.O T (P)	295.19
NO.2 C.F.O T (S)	300.94
SUM	596.13

Dedicated Brine	
Compartment	Volume 100% m ³
DEDICATED BRINE	172.725
SUM	172.725

Methanol (S.G. = 0.7918t/m ³)	
Compartment	Volume 100% m ³
METHANOL (P)	144.59
METHANOL (S)	147.22
SUM	291.81

Base Oil	
Compartment	Volume 100% m ³
BASE OIL (P)	57.099
BASE OIL (S)	160.421
SUM	217.52

Water Ballast / Drill Water Tanks (S.G. = 1.025t/m ³)	
Compartment	Volume 100% m ³
FORE PEAK TANK NO.1 W.B/D.W	235.8
NO.2 W.B/D.W (P)	20.578
NO.2 W.B/D.W (S)	17.715
NO.3 W.B/D.W (P)	77.32
NO.3 W.B/D.W (S)	77.32
NO.3 W.B/D.W (DBP)	43.253
NO.3 W.B/D.W (DBS)	43.253
NO.4 W.B/D.W (P)	97.89
NO.4 W.B/D.W (S)	99.97
NO.9 W.B/D.W (P)	168.667
NO.9 W.B/D.W (S)	168.667
NO.10 W.B/D.W (P)	58.212
NO.10 W.B/D.W (S)	58.212
NO.11 W.B/D.W	81.023
NO.12 W.B/D.W (DB)	256.01
NO.13 W.B/D.W (P)	54.635
NO.13 W.B/D.W (S)	54.635
NO.14 W.B/D.W (P)	99.22
NO.14 W.B/D.W (S)	109.45
NO.1 MUD/BRINE/R.O/NO.5 W.B/D.W (P)	119.701
NO.1 MUD/BRINE/R.O/NO.5 W.B/D.W (S)	119.701
NO.2 MUD/BRINE/R.O/NO.6 W.B/D.W (P)	88.109
NO.2 MUD/BRINE/R.O/NO.6 W.B/D.W (S)	88.109
NO.3 MUD/BRINE/R.O/NO.7 W.B/D.W (P)	64.55
NO.3 MUD/BRINE/R.O/NO.7 W.B/D.W (S)	64.55
NO.4 MUD/BRINE/R.O/NO.8 W.B/D.W (P)	88.109
NO.4 MUD/BRINE/R.O/NO.8 W.B/D.W (S)	88.109
SUM	2542.768

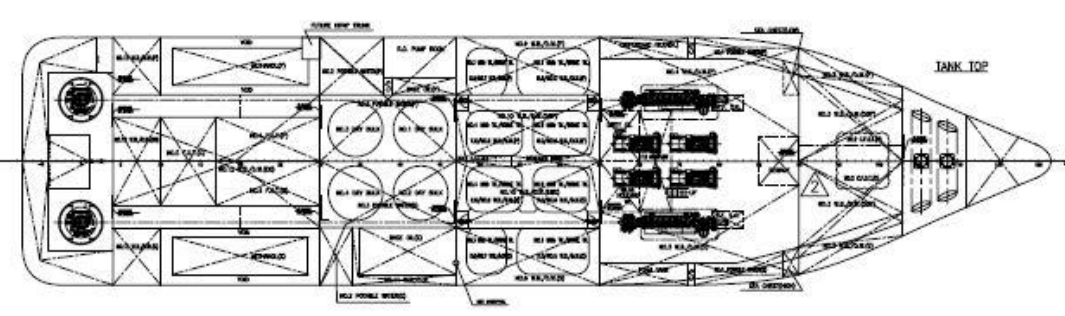
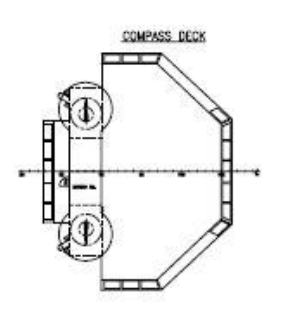
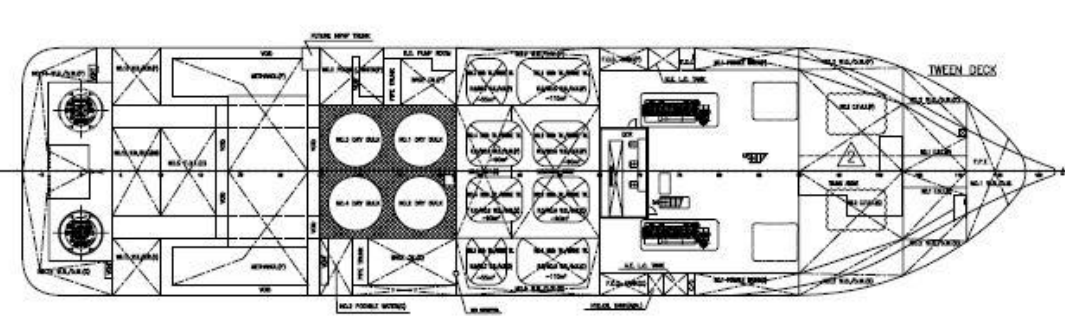
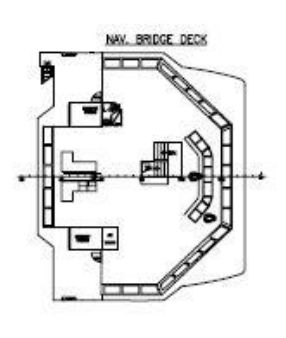
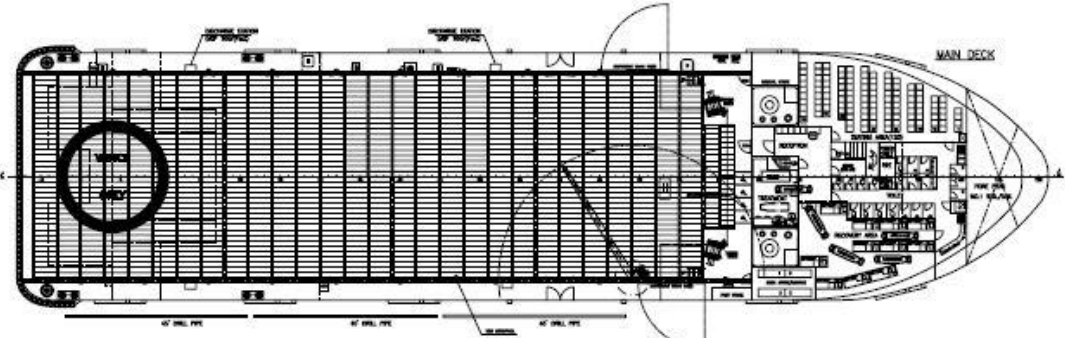
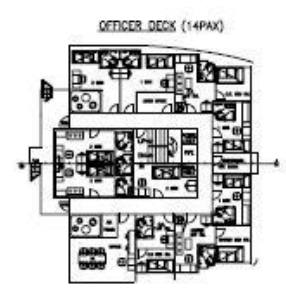
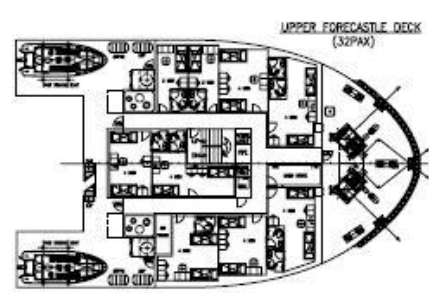
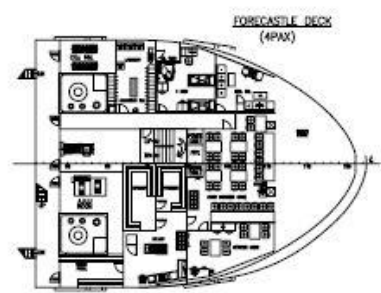
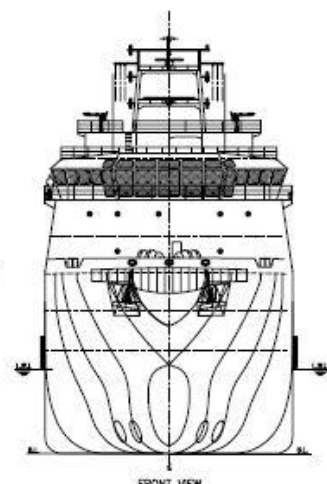
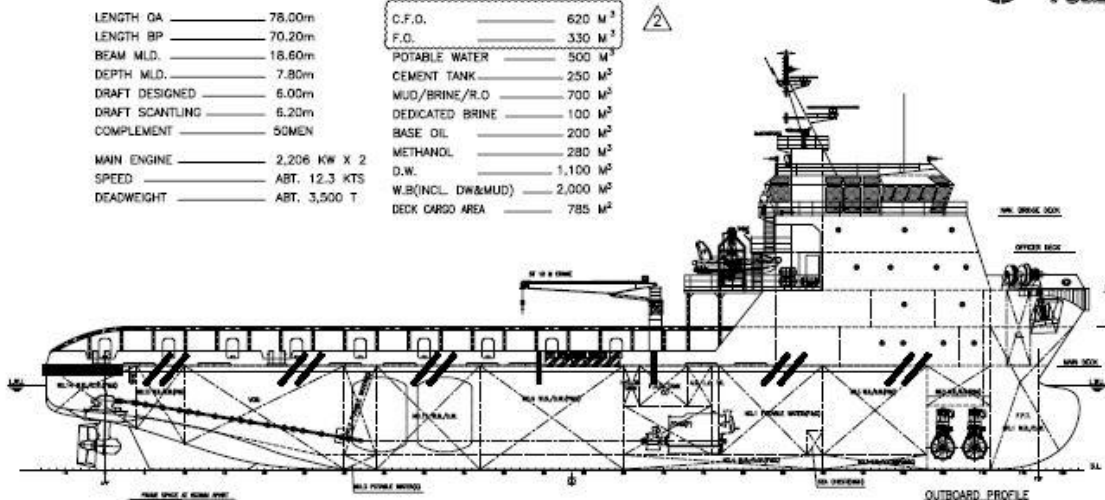
Cargo Oil Tank (S.G. = 0.9t/m ³)	
Compartment	Volume 100% m ³
NO.1 DRY BULK	62.5
NO.2 DRY BULK	62.5
NO.3 DRY BULK	62.5
NO.4 DRY BULK	62.5
SUM	250

FOCAL 522 78M PSV

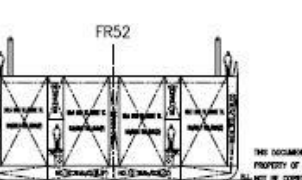
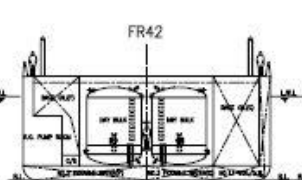
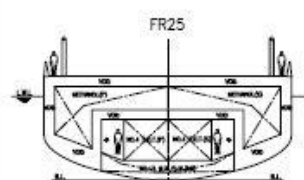
PRINCIPAL PARTICULARS

LENGTH OA	78.00m
LENGTH BP	70.20m
BEAM MLD.	18.60m
DEPTH MLD.	7.80m
DRAFT DESIGNED	6.00m
DRAFT SCANTLING	6.20m
COMPLEMENT	50 MEN
MAIN ENGINE	2,206 KW X 2
SPEED	ABT. 12.3 KTS
DEADWEIGHT	ABT. 3,500 T

C.F.O.	620 M ³
F.O.	330 M ³
POTABLE WATER	500 M ³
CEMENT TANK	250 M ³
MUD/BRINE/R.O.	700 M ³
DEDICATED BRINE	100 M ³
BASE OIL	200 M ³
METHANOL	280 M ³
D.W.	1,100 M ³
W.B.(INCL. DW&MUD)	2,000 M ³
DECK CARGO AREA	785 M ²



ISSUED FOR APPROVAL



THIS DOCUMENT AND THE CONTENT ARE COPYRIGHT AND REMAIN PROPERTY OF FOCAL MARINE & OFFSHORE PTE LTD. THEY MUST NOT BE COPIED OR REPRODUCED IN WHOLE OR IN PART TO ANY THIRD PARTY FOR ANY PURPOSE WITHOUT WRITTEN PERMISSION FROM FOCAL MARINE & OFFSHORE PTE LTD. THE RECEIPT OF THIS DOCUMENT IMPLIES ACCEPTANCE OF THIS CONDITION.

CLASS ABS #410 OFFSHORE SUPPORT VESSEL, OR RECOVERY OFFSHORE CLASS 1, SAFETY SENIOR SERVICE OR 0-1145, THE TOWING VESSEL CLASS 1, # ABS # SPS-2		
2	AMENDED AS PER OWNER COMMENTS	L.I. JUL-9-2012
1	AMENDED AS PER OWNER COMMENTS	F.R.F. FEB-21-2012
0	ISSUED FOR APPROVAL	ZF SEP-13-2011
REV. NO.	REVISION DESCRIPTION	BY DATE
OWNER: ADARA LIMITED		
BUILDER: POET SHIPBUILDING & ENGINEERING PTE LTD HULL NO.: POET 1513/1514		
PROJECT: 78M PLATFORM SUPPLY/OIL RECOVERY /SAFETY STANBY VESSEL "FOCAL 522"		
APPROVE:	DRG TITLE: GENERAL ARRANGEMENT	JOB NO.: P-1510
CHECKER:		DRG NO.: P-1510-001
DRAWER: ZF		SCALE: 1:8000(A1)
		CLASS: ABS

FOCAL MARINE & OFFSHORE PTE LTD
TEL: 65-21-58705789 FAX: 65-21-50313285 EMAIL: info@focalmarine.com