

POSH GALANTE



2,346 DWT/ Diesel Electric / 64M PSV-DP2 Call sign: 3FCVA

Class Notation LR+A1 Offshore Support Vessel +AMS +DPS-2 "Circle E", SOLAS, USCG Subchapter L, Full Ocean

Principal Particulars

z	Panama
Year Built	2008
Place Built	Bender Shipbuilding & Repair, Co., Inc.
Design Draft	4.90 m
Max Draft	5.8
Gross Tonnage	1,708.0 T
Net Tonnage	529.0 T
Deadweight (Max Draught)	2,346 T @ 5.8 m draft
Displacement	4,818.0 T
IMO No.	9410868
Design	Bender 210FT PSV (8065-8066)

Dimensions

Length Overall	64.00 m
Beam Overall	16.50 m
Depth Moulded	5.80 m

Performance

Max Speed	12.00 kts
Economical Speed	10.00 kts
* Subject to actual weather and operating conditions	

Cargo Deck

Deck Cargo Area	568.0 m ²
Deck Cargo Dimension	41.5 m x 13.7 m
Deck Cargo Capacity	1200.0 T
Deck Strength	5 T/m ²
Reefer Points	4 (2 x 440v , 2 x 220v)

Total Capacities

Fuel Tank	766.44 m ³
Fresh Water *	74.4 m ³
Drill Water *	205.51 m ³
Ballast Water *	487.0 m ³
Mud Tank *	820.0 m ³
Brine Tank *	820.0 m ³
Dry Bulk Tank	200.0 m ³ (in 4 tanks)
* Indicates tanks with shared	

Discharging Rates

Drill Water/Pump	1 x 150 m ³ /hr@60 m head
Fresh Water/Pump	1 x 150 m ³ /hr@60 m head
Fuel/Pump	1 x 150 m ³ /hr@60 m head
Brine/Pump	1 x 80 m ³ /hr@60 m head
Liquid mud/Pump	1 x 150 m ³ /hr@60 m head
Dry Bulk Tank	1 x 50 m ³ /hr@60 m head

Accommodation

1 – Berth Cabins	4
2 – Berth Cabins	5
4 – Berth Cabins	2
Total (POB)	22

Machinery & Equipment

Main Engine	Cummins 2 x 2,447 BHP @ 480V/60Hz
Generators	Cummins 1 x 1,220 BHP @ 480V/60Hz
Emergency Generator	Cummins 1 x 228 BHP @ 480V/60Hz

Thruster & Propulsion

Azimuth Thruster/Propeller	Steerprop 20, 2 x 2,100 BHP, Z drive, 360°Azimuting
Bow Thruster	Bergen 2 x 1,000 BHP CPP @ 1,200 RPM

Deck Crane

Fixed Crane	SWL 1.8 T @ 10.0m radius
-------------	--------------------------

Mooring Equipment

Anchors	2 x AC-14 Type Anchor; 2,460 kg each
Anchor Windlass	1 x 10.0 T each @ 0-9 m/min

Dynamic Positioning System

DP Class	Converteam ADP-2 system + Converteam (IJS)System
References	2 x DGPS + 1 x Cyscan system

Rescue Equipment

Rescue Boat	1 x 6 man/rigid/124 hp
Life rafts	4 x 25 man
Life Buoys	12
Life Jackets	40

CARGO CAPACITY PLAN

Ballast Water (S.G = 1.025)	
Compartment	Volume 100% m ³
BAL FP (C)	33.4
BAL #1 (S)	27.3
BAL #1 (P)	27.3
ANTI-ROLL	312.9
BAL #3 (S)	30.1
BAL #3 (P)	29.7
BAL A.P. (C)	26.6
SUM	487.3

Fresh Water Tanks (S.G. = 1.00)	
Compartment	Volume 100% m ³
F.W. #1 (S)	37.16
F.W. #1 (P)	37.16
SUM	74.32

Rig Fresh Water Tanks (S.G. = 1.00)	
Compartment	Volume 100% m ³
F.W. RGD.B #2 (C)	36.35
F.W. RGD.B #3 (C)	167.11
SUM	203.46

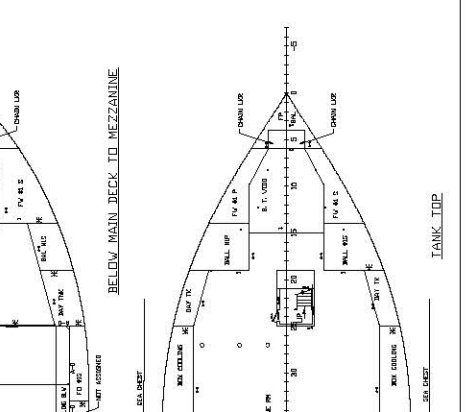
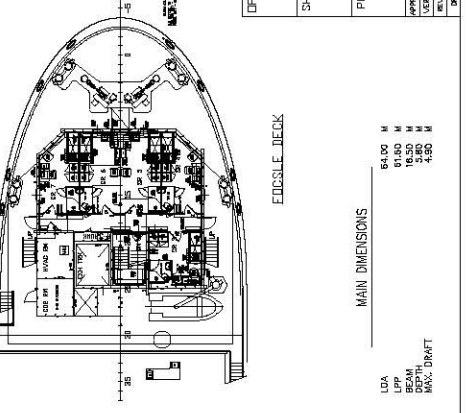
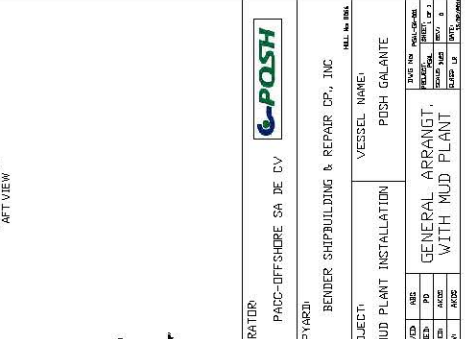
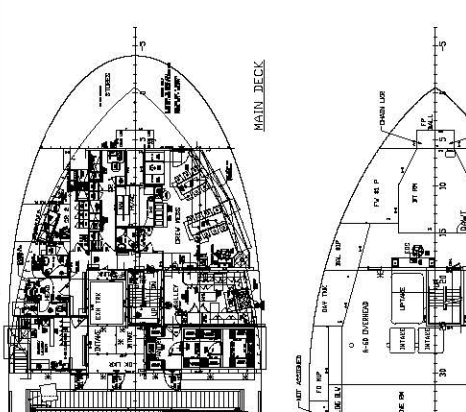
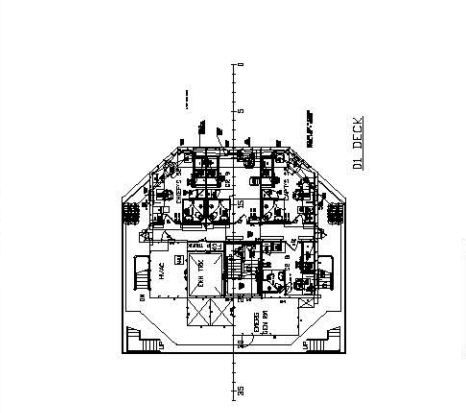
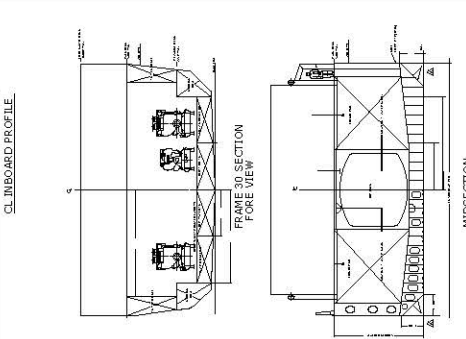
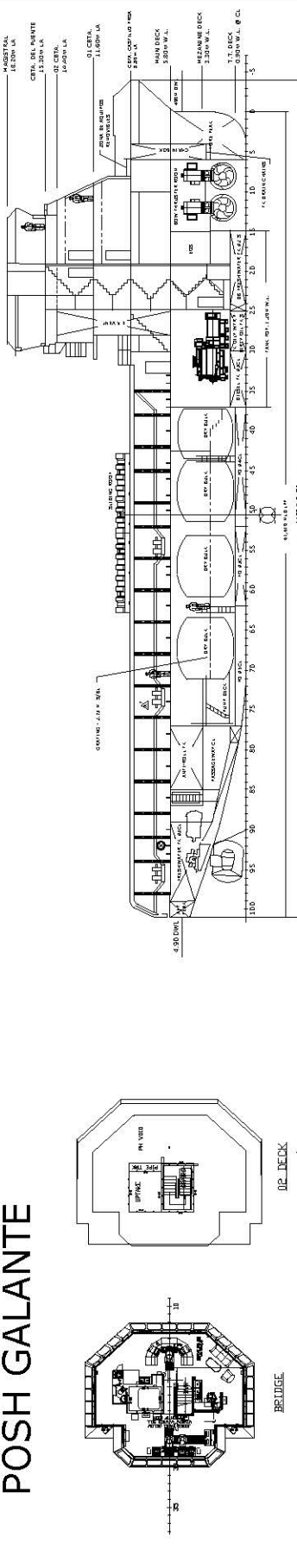
Fuel Oil (S.G. = 0.870)	
Compartment	Volume 100% m ³
F.O. DAY (S)	22.5
F.O. DAY (P)	22.5
EMG. F.O. (S)	1.04
F.O. #1 (S)	11.8
F.O. #1 (P)	11.8
F.O. DB #2 (S)	37.8
F.O. DB #2 (P)	37.8
F.O. #3 (S)	130.3
F.O. #3 (P)	125.1
F.O. #4 (S)	88
F.O. #4 (P)	82.8
F.O. #5 (S)	120
F.O. #5 (P)	120
SUM	811.44

Dry Bulk Tank (S.G. = 1.60)	
Compartment	Volume 100% m ³
DRY BULK #1 (C)	32.1
DRY BULK #2 (C)	56.6
DRY BULK #3 (C)	56.6
DRY BULK #4 (C)	56.6
SUM	201.9

Liquid Mud (S.G = 2.50)	
Compartment	Volume 100% m ³
LIQ MUD #1 (S)	102.5
LIQ MUD #1 (P)	102.5
LIQ MUD #2 (S)	102.5
LIQ MUD #2 (P)	102.5
LIQ MUD #3 (S)	102.5
LIQ MUD #3 (P)	102.5
LIQ MUD #4 (S)	102.5
LIQ MUD #4 (P)	102.5
SUM	820

MISC. TANKS	
Compartment	Volume 100% m ³
DIRTY OIL (S)	10.5
OILY WATER (P)	10.5
L.O. 1 FWD (S)	3.5
L.O. 2 FWD (S)	3.6
L.O. FWD (P)	7.1
L.O. AFT (P)	1.32
SEW HLDG	18.2
SUM	54.72

POSH GALANTE



OPERATOR: PACO-OFFSHORE SA DE DV

SHIPYARD: BENDER SHIPBUILDING & REPAIR CP., INC.

PROJECT: MUD PLANT INSTALLATION

VESSEL NAME: POSH GALANTE

GENERAL ARRANGT. WITH MUD PLANT

NO.	DESCRIPTION	DATE	BY	CHKD.
1	GENERAL ARRANGT. WITH MUD PLANT	15/08/11
2
3
4
5
6
7
8
9
10
11
12
13
14
15
16
17
18
19
20

MAIN DIMENSIONS

LOA	64.00 M
BEAM	16.50 M
DEPTH	5.80 M
BRIG DRAFT	1.80 M

