

## POSH FULMAR



**3,200 DWT / 78m / DP 2 / Diesel Electric / PSV Call sign: 9V7601**

**Class Notation**

DNV +1A1, SF, E0, DK(+), HL(3.0), DynposAUTR, Clean design, LFL\*, BIS, COMF V(3), NAUT OSV(A), Fire Fighter 1, OILREC

**Principal Particulars**

Flag	Singapore
Year Built	2013
Place Built	PaxOcean Engineering, Zhuhai, China
Design Draft	5.10 m
Max Draft	5.90 m
Gross Tonnage	2,644.0 T
Net Tonnage	985.0 T
Deadweight (Max Draft)	3,200.0 T @ 5.90 m draft
Displacement	5,200.0 T
IMO No.	9648623
Design	Rolls-Royce UT 755 CD

**Dimensions**

Length Overall	78.70 m
Beam Overall	16.00 m
Depth Moulded	07.00 m

**Performance**

Max Speed	12.00 kts
Economical Speed	10.00 kts

\* Subject to actual weather and operating conditions

**Cargo Deck**

Deck Cargo Area	670.0 m <sup>2</sup>
Deck Cargo Dimension	50.7 m x 13.2 m
Deck Cargo Capacity	960.0 T
Deck Strength	5.0 T/m <sup>2</sup>
Reefer Points	8 ( 6 x 415v , 2 x 220v)

**Capacities**

Fuel Tank	887.0m <sup>3</sup>
Fresh Water	697.0m <sup>3</sup>
Drill Water *	898.0m <sup>3</sup>
Ballast Water *	898.0m <sup>3</sup>
Mud Tank	624.0 m <sup>3</sup>
Brine Tank	624.0 m <sup>3</sup>
Dry Bulk Tank	251.5 m <sup>3</sup> (in 5 tanks)

\* Indicates tanks with shared capacity

**Discharging Rates**

Drill Water/Pump	1 x 150 m <sup>3</sup> /hr@85 m head
Fresh Water/Pump	1 x 150 m <sup>3</sup> /hr@90 m head
Fuel/Pump	1 x 150 m <sup>3</sup> /hr@100 m head
Brine/Pump	1 x 75 m <sup>3</sup> /hr@55 m head
Liquid mud/Pump	1 x 100 m <sup>3</sup> /hr@60 m head
Dry Bulk Tank	1 x 75 m <sup>3</sup> /hr@50 m head

**Accommodation**

1 – Berth Cabins	8
2 – Berth Cabins	9
Total (POB)	26

**Machinery & Equipment**

Main Generator	Caterpillar 4 x 1,220 BHP, 440V/60Hz
Emergency Generator	Lindenberg 1 x 95 kW, 440V/60Hz

**Thruster & Propulsion**

Azimuth Thruster/Propellers	Rolls-Royce 2 x 1470 kW, US 205 CP with nozzle
Bow Thruster	Rolls-Royce 2 x 700 kW, 440V/60Hz each

**Deck Crane**

Fixed Crane	SWL 5.0 T @ 16.0 m radius
-------------	---------------------------

**Mooring Equipment**

Anchors	2 x SPEK Type Anchor; 2,850 kg each
Anchor Windlass	1 x 8.0 T each @ 0-12 m/min
Tugger Winch	Rolls-Royce 1 x 10.0 T each @ 0-19 m/min
Capstans	2 x 8.0 T each @ 0-16 m/min

**Dynamic Positioning System**

DP Class	DP 2 Dynpos AUTR, Rolls-Royce, Poscon joystick
References	2 x DGPS + 1 Laser Fanbeam

**Fire Fighting and Rescue**

Firefighting System	FiFi 1
FiFi Pump	2 x 1,200 m <sup>3</sup> /hr
FiFi Monitors	1 x 300 m <sup>3</sup> /hr
Spray Booms	2 x 6.0 m/Fixed Nozzle
Dispersant Capacity	12.57 m <sup>3</sup>
Foam Capacity	NIL
Rescue Boat	1 x 15 man/rigid/123 hp
Life rafts	6 x 25 man
Life Buoys	8
Life Jackets	26

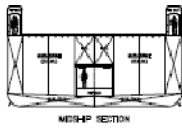
## CARGO CAPACITY PLAN

Tank No.	Volume m <sup>3</sup>	Fuel m <sup>3</sup> SG 0.900	Fresh Water m <sup>3</sup> SG 1.000	Ballast Water m <sup>3</sup> SG 1.025	Mud m <sup>3</sup> SG 3.000	Brine m <sup>3</sup> SG 2.800	ORO m <sup>3</sup> SG 1.000	Drill Water m <sup>3</sup> SG 1.000	Dry Bulk m <sup>3</sup> SG 2.160	Methanol m <sup>3</sup> SG 0.791	Base Oil m <sup>3</sup> SG 0.830
*1	33.0			33.0				33.0			
2	72.3		72.3								
3	72.3		72.3								
*4	74.4			74.4				74.4			
*5	95.8			95.8				95.8			
*7A	60.0			60.0				60.0			
*7B	59			59				59			
*8	85.7			85.7				85.7			
*9	85.7			85.7				85.7			
*10	79.2			79.2				79.2			
*11	79.2			81.2				79.2			
12	54.6		54.6								
13	54.9		54.9								
14	51		51								
15	51.3		51.3								
*16	77.5			77.5				77.5			
*17	77.5			77.5				77.5			
18	26.3		26.3								
*19	62.5		62.5								
*20	170.4		170.4	170.4				170.4			
*22	64.1	64.1								64.1	
*23	71.2	71.2								71.2	
24	211.8			211.8							
25	81.4		81.4								
30	19.6	19.6									
31	19.6	19.6									
33	15.7	15.7									
34	82.1	82.1									
35	82.1	82.1									
36	82.1	82.1									82.1
37	82.1	82.1									82.1
*38	82.1	82.1									82.1
*39	82.1	82.1									82.1
*50	102.1	102.1			102.1	102.1					
*51	102.1	102.1			102.1	102.1					
*52	102.7				102.7	102.7	102.7				
*53	102.7				102.7	102.7	102.7				
*54	102.7				102.7	102.7	102.7				
*55	102.7				102.7	102.7	102.7				
*56	102.7				102.7	102.7	102.7				
*57	102.7				102.7	102.7	102.7				
60	50.3								50.3		
61	50.3								50.3		
62	50.3								50.3		
63	50.3								50.3		
64	50.3								50.3		
*66	90.3			90.3				90.3			
*67	90.3			90.3				90.3			
*68	84.3			84.3				84.3			
*69	84.3			84.3				84.3			
<b>TOTAL</b>		<b>887</b>	<b>697</b>	<b>1540.4</b>	<b>820.4</b>	<b>820.4</b>	<b>616.2</b>	<b>1326.6</b>	<b>251.5</b>	<b>135.3</b>	<b>328.4</b>

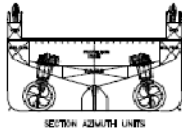
Particulars given herein are believed to be correct but not guaranteed. Owner reserves the rights to amend specifications without notification.



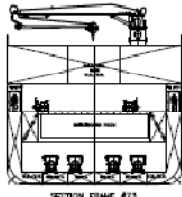
# UT-Design™ UT 755 CD



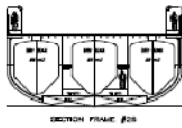
MIDSHIP SECTION



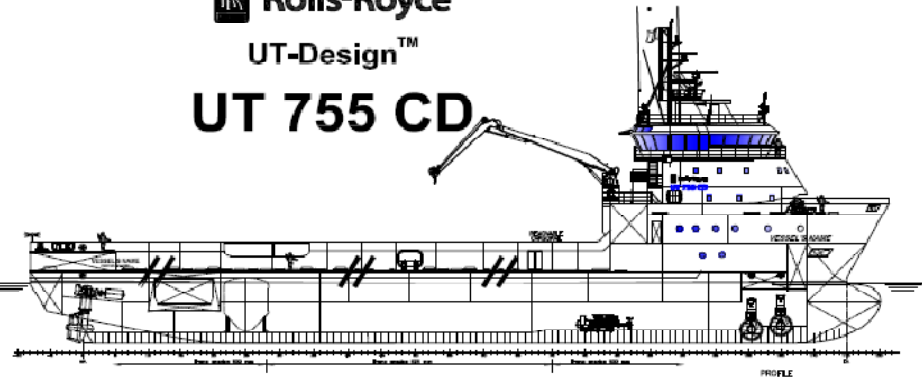
SECTION DECK UNITS



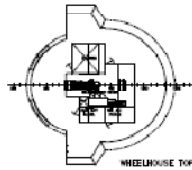
SECTION FRAME #73  
LOOKING FORWARD



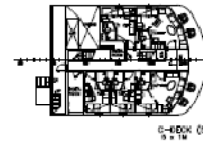
SECTION FRAME #69



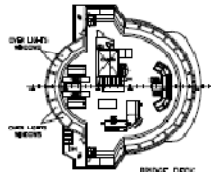
PROFILE



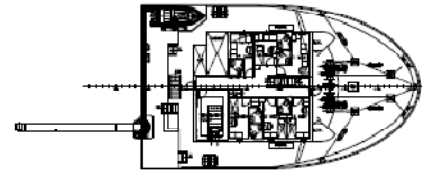
WHEELHOUSE TOP



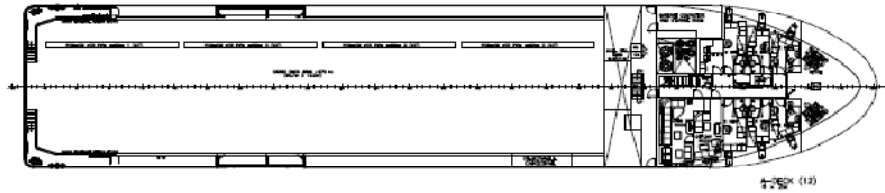
0-DECK (3)  
3:10



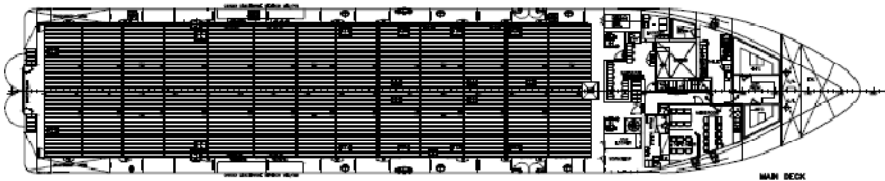
BRIDGE DECK



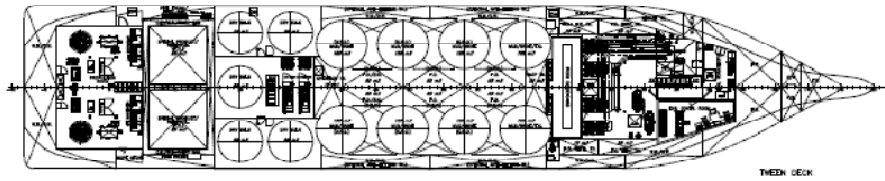
II-DECK (3)  
3:10



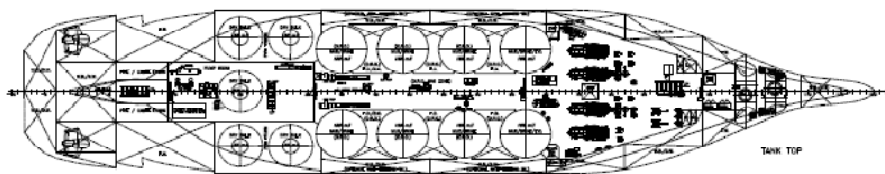
I-DECK (1)



MAIN DECK



MIDD DECK



TANK TOP

**MAIN PARTICULARS**  
 L.O.A. .... APPROX. 78.70 m  
 L.P.P. .... 70.10 m  
 BREADTH MLD. .... 16.00 m  
 DEPTH MAIN DK. .... 7.00 m  
 DESIGN DRAFT ..... 5.10 m  
 MAX DRAFT ..... APPROX. 5.80 m

NO.	REVISION	DATE	BY	CHKD.	APP'D.
1	ISSUED				
2	REVISION				
3	REVISION				
4	REVISION				
5	REVISION				
6	REVISION				
7	REVISION				
8	REVISION				
9	REVISION				

GENERAL ARRANGEMENT

Scale: 1:100

DATE: 10/10/2010

BY: [Signature]

CHKD.: [Signature]

APP'D.: [Signature]