

POSH SHEARWATER



3,200 DWT/ Platform Supply Vessel (PSV)/ DP 2 Call sign: 3EJM7

Class Notation

+100A1 Offshore Supply Ship, Fire-Fighting Ship 1 (3200 m³/hr), Oil Recovery, *IWS, LI, RD (Liquid Mud Tanks, 3,000), LFPL (Methanol, 430C.) Side Tanks from Frame No. 11 to Frame No. 20). WDL (Stlm2 from Aft to Frame No. 79), ECO (TOC) + LMC, UMS, DP (AA), CAC3

Principal Particulars

Flag	Panama
Year Built	2013
Place Built	PaxOcean Engineering, Zhuhai, China
Design Draft	5.10 m
Max Draft	5.90 m
Gross Tonnage	2,644.0 T
Net Tonnage	893.0 T
Deadweight (Max Draft)	3,176.0 T @ 5.90 m draft
Displacement	5,200 T
IMO No.	9618070
Design	Rolls-Royce UT-755 CD

Dimensions

Length Overall	78.70 m
Beam Overall	16.00 m
Depth Moulded	7.00 m

Performance

Max Speed	12.00 kts
Economical Speed	10.00 kts

* Subject to actual weather and operating conditions

Cargo Deck

Deck Cargo Area	670.0 m ²
Deck Cargo Dimension	51.0 m x 13.3 m
Deck Cargo Capacity	1,200 T
Deck Strength	5.5 T/m ²
Reefer Points	8 (6 x 415v , 2 x 220v)

Capacities

Fuel Tank	1,049 m ³
Fresh Water	539.1 m ³
Drill Water *	1,611.6 m ³
Ballast Water *	1,611.6 m ³
Mud Tank *	624.0 m ³
Brine Tank *	624.0 m ³
Dry Bulk Tank	222.3 m ³ (in 4 tanks)

* indicates tanks with shared capacity

Discharging Rates

Drill Water/Pump	1 x 100 m ³ /hr@80 m head
Fresh Water/Pump	1 x 150 m ³ /hr@90 m head
Fuel/Pump	1 x 150 m ³ /hr@90 m head
Brine/Pump	1 x 100 m ³ /hr@90m head
Liquid mud/Pump	1 x 100 m ³ /hr@90m head
Dry Bulk Tank	1 x 75 m ³ /hr@60 m head

Accommodation

1 – Berth Cabins	8
2 – Berth Cabins	9
Total (POB)	26

Machinery & Equipment

Main Generator	Caterpillar 4 x 1,225 BHP, 440V/60Hz
Emergency Generator	John Deere 1 x 130 BHP, 440V/60Hz

Thruster & Propulsion

Azimuth Thruster	Rolls-Royce 2 x 1470 kW, US 205 CP with nozzle
Bow Thruster	Rolls-Royce 2 x 700 kW, 440V/60Hz each

Deck Crane

Fixed Crane	SWL 5.0 T @ 16.0 m radius
-------------	---------------------------

Mooring Equipment

Anchors	2 x SPEK Type Anchor; 2,850 kg each
Anchor Windlass	1 x 8.0 T each @ 0-12 m/min
Tuqquer Winch	2 x 8.0 T each @ 0-19 m/min
Capstans	2 x 8.0 T each @ 0-16 m/min

Dynamic Positioning System

DP Class	DP 2 Dvnpas AUTR, Rolls-Royce, Poscon joystick system
References	2 x DGPS + 1 Laser Fanbeam

Fire Fighting and Rescue

Firefighting System	Fifi 1
Fifi Pump	2 x 1,200 m ³ /hr
Fifi Monitors	1 x 300 m ³ /hr
Spray Booms	2 x 6.0 m/Fixed Nozzle
Dispersant Capacity	12.57m ³
Foam Capacity	NIL
Rescue Boat	1 x 15 man/raid/212hp
Life rafts	6 x 25man
Life Buoys	8
Life Jackets	26

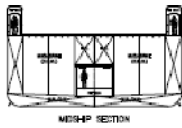
CARGO CAPACITY PLAN

Tank No.	Volume m ³	Fuel m ³ SG 0.900	Fresh Water m ³ SG 1.000	Ballast Water m ³ SG 1.025	Mud m ³ SG 3.000	Brine m ³ SG 2.800	ORO m ³ SG 1.000	Drill Water m ³ SG 1.000	Dry Bulk m ³ SG 2.160	Methanol m ³ SG 0.791	Base Oil m ³ SG 0.830
*1	33.0			33.0				33.0			
2	72.0		72.0								
3	72.3		72.3								
*4	74.4			74.4				74.4			
*5	95.8			95.8				95.8			
*7A	60.0			60.0				60.0			
*7B	59.0			59.0				59.0			
*8	85.7			85.7				85.7			
*9	85.7			85.7				85.7			
*10	79.2			79.2				79.2			
*11	79.2			81.2				79.2			
12	54.6		54.6								
13	54.9		54.9								
14	51.0		51.0								
15	51.3		51.3								
*16	77.5			77.5				77.5			
*17	77.5			77.5				77.5			
18	26.3		26.3								
*19	62.5		62.5								
*20	170.4		170.4	170.4				170.4			
*22	64.1	64.1								64.1	
*23	71.2	71.2								71.2	
24	211.8			211.8							
25	81.4		81.4								
30	19.6	19.6									
31	19.6	19.6									
33	15.7	15.7									
34	82.1	82.1									
35	82.1	82.1									
36	82.1	82.1									82.1
37	82.1	82.1									82.1
*38	82.1	82.1									82.1
*39	82.1	82.1									82.1
*50	102.1	102.1			102.1	102.1					
*51	102.1	102.1			102.1	102.1					
*52	102.7				102.7	102.7	102.7				
*53	102.7				102.7	102.7	102.7				
*54	102.7				102.7	102.7	102.7				
*55	102.7				102.7	102.7	102.7				
*56	102.7				102.7	102.7	102.7				
*57	102.7				102.7	102.7	102.7				
60	50.3									50.3	
61	50.3									50.3	
62	50.3									50.3	
63	50.3									50.3	
64	50.3									50.3	
*66	90.3			90.3				90.3			
*67	90.3			90.3				90.3			
*68	84.3			84.3				84.3			
*69	84.3			84.3				84.3			
TOTAL	3819.4	887.0	696.7	1480.4	820.4	820.4	616.2	1326.6	251.5	135.3	328.4

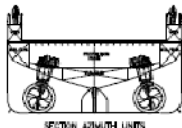
Particulars given herein are believed to be correct but not guaranteed. Owners reserve the rights to amend specifications without notification.



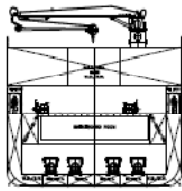
UT-Design™ UT 755 CD



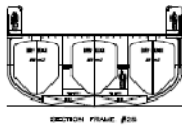
MIDSHIP SECTION



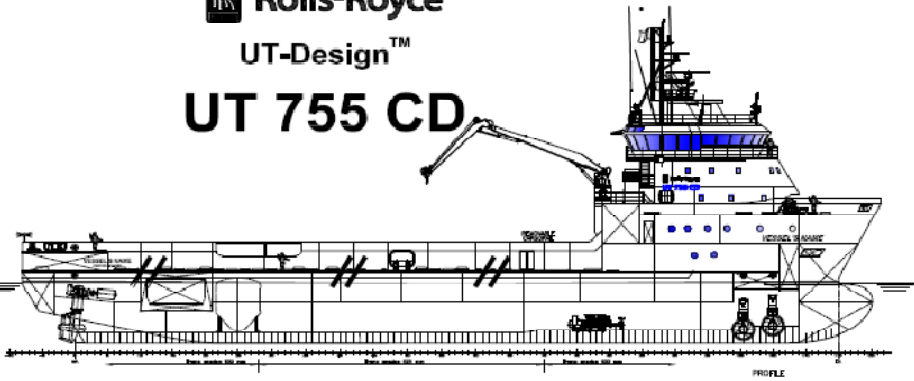
SECTION ADMITTANCE UNITS



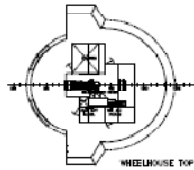
SECTION FRAME #73
LOOKING FORWARD



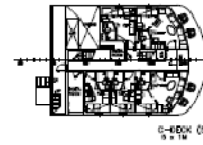
SECTION FRAME #69



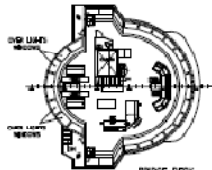
PROFILE



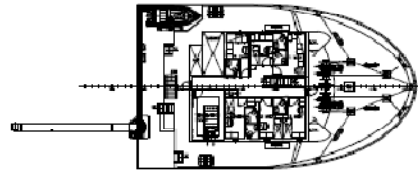
WHEELHOUSE TOP



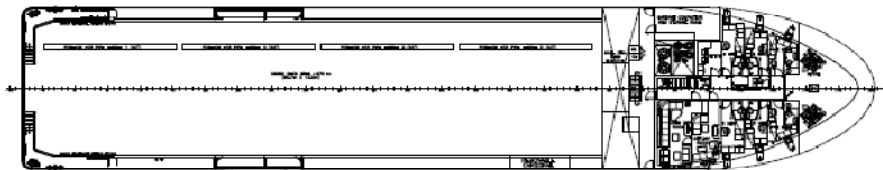
0-DECK (9)
3:2:10



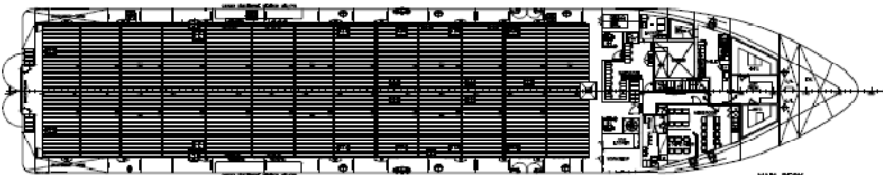
BRIDGE DECK



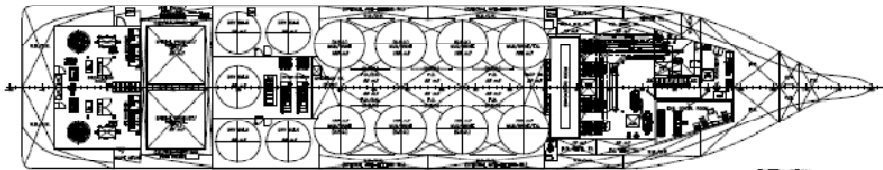
8-DECK (8)
3:2:10



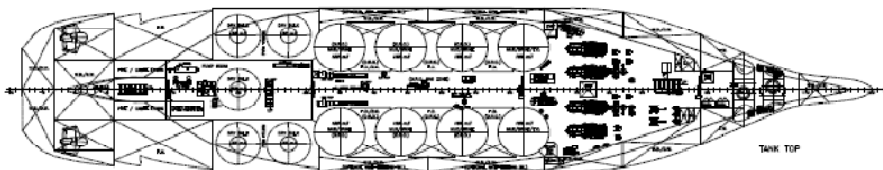
7-DECK (7)



MAIN DECK



6-DECK (6)



TANK TOP

MAIN PARTICULARS

L.O.A. APPROX. 78.70 m
 L.P.P. 70.10 m
 BREADTH MLD. 16.00 m
 DEPTH MAIN DK. 7.00 m
 DESIGN DRAFT 5.10 m
 MAX DRAFT APPROX. 5.80 m

1	DESIGN	1	1
2	APPROVED	1	1
3	REVISION	1	1
4	DATE	1	1
5	BY	1	1
6	DATE	1	1
7	BY	1	1
8	DATE	1	1
9	BY	1	1
10	DATE	1	1

GENERAL ARRANGEMENT

Scale: 1:1000

100% 100% 100% 100%