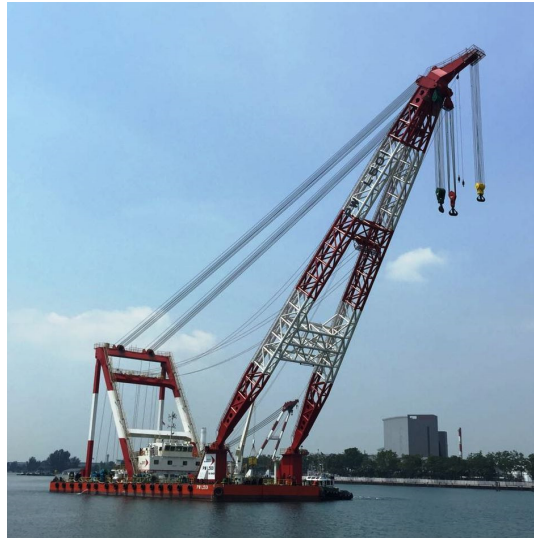


PW L501



Floating Sheerleg 500T Lift Capacity

Principal Particulars:

Classification	: ABS A1 Barge, Home trade limits
Flag	: Singapore
Port of Registry	: Singapore
Year Built	: 2013
Length Overall	: 60 m
Beam Overall	: 25 m
Depth Moulded	: 4.50 m
Max Draught	: 3 m

Capacities:

Gross Tonnage	: 1911 tons
Net Tonnage	: 573 tons
Fuel Tank	: 150 Metric tons
Fresh Water	: 200 Metric tons
Living Quarter	: 14 persons

Anchoring & Mooring Equipment:

Messenger	: 2 set
Capacity	: 10 Metric tons
Wire Size / Length	: 24mm / 200m
Stern Anchor	: 3 sets
Capacity	: 20 Metric tons
Anchor	: 4.050 tons Anchor
Wire Size / Length	: 28mm / 500m
Forward Anchor	: 3 set
Capacity	: 20 metric tons
Anchor	: 4.050 tons stockless
Wire Size / Length	: 28mm / 500m
Mooring	: 2 sets
Pulling Capacity	: 10 metric tons
Wire Size / Length	: 26mm / 300m
Working Line	: 2 sets with capstan
Pulling Capacity	: 10 metric tons
Wire Size / Length	: 24mm / 200m

Sheerlegs:

Boom Length	: 79 meter
Max Lifting Capacity	: 500 metric tons
Main Hook	: 2 x 250 metric tons at Boom Angle 65°
Auxiliary Hook	: 1 x 200 metric tons at Boom Angle 65°
Lifting Height of Main Hook	: 62.0 m at Boom Angle 65°
Lifting Height of Aux Hook	: 67.0 m at Boom Angle 65°

Main Hoisting Winches Port	: 2 Wire Drums
Line Pull	: 25 Metric tons
Wire Size / Length	: 34mm / 1300m

Main Hoisting Winches Stbd	: 2 Wire Drums
Line Pull	: 25 Metric tons
Wire Size / Length	: 34mm / 1300m

Auxiliary Hoisting winches	: Single Wire Drums
Line Pull	: 22 Metric tons
Wire Size / Length	: 32mm / 1300m

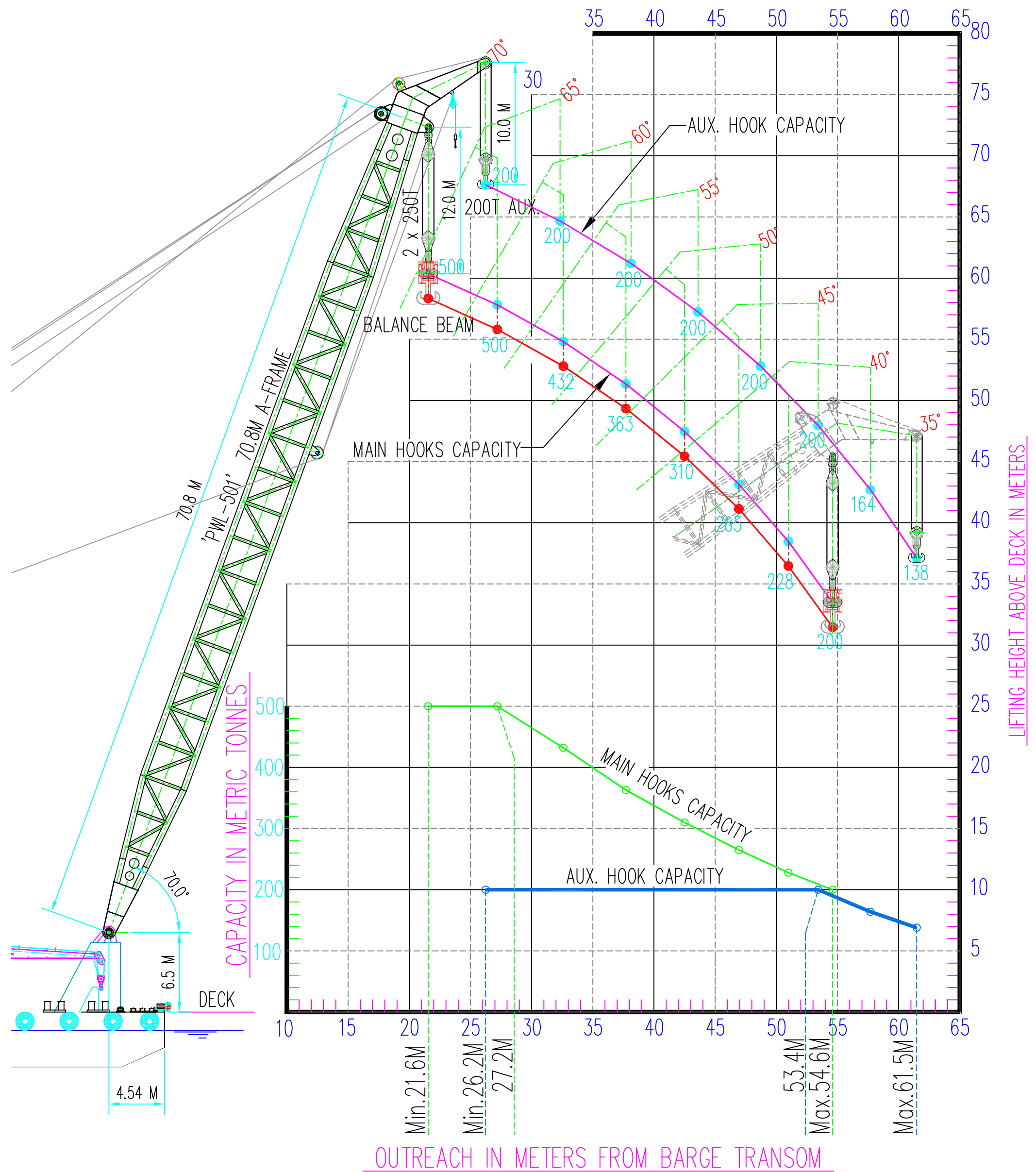
Topping Winch	: 2 Nos. 2 Wire Drums
Line Pull	: 35 Metric tons
Brake Capacity	:
Wire Size / Length	: 40mm / 2 x 1500m

Auxiliary Equipment

Main Generator No.1	Model	: Caterpillar, AC 400V 3ph,50Hz, 0.8pf, 450KW, 812A, 1500rpm
Main Generator No.2	Model	: Caterpillar, AC 400V 3ph,50Hz, 0.8pf, 450KW, 812A, 1500rpm
Main Generator No.3	Model	: Caterpillar, AC 400V 3ph,50Hz, 0.8pf, 450KW, 812A, 1500rpm
Harbour Generator	Model	: Caterpillar, AC 400V 3ph,50Hz, 0.8pf, 69KW,124A, 1500rpm

Other

1 x 10 tons 14m Full Slew Hydraulic Deck Crane
2 x 330KW, 1800rpm, 1750N.m Engine Driven Thruster



CAPACITY DIAGRAM 'PW L-501'
SCALE 1:300

'PWL-501' Lifting Capacity Table

Boom Angle	2 x Main Hooks			1 x Main Hook	Aux. Hook		
	Capacity (MT)	Outreach (m)	Hook Height (m)	Capacity (MT)	Capacity (MT)	Outreach (m)	Hook Height (m)
70.0	500.0	21.6	60.3	250.0	200.0	26.2	67.6
69.5	500.0	22.1	60.1	250.0	200.0	26.9	67.4
69.0	500.0	22.7	59.9	250.0	200.0	27.5	67.1
68.5	500.0	23.3	59.6	250.0	200.0	28.1	66.8
68.0	500.0	23.8	59.4	250.0	200.0	28.7	66.5
67.5	500.0	24.4	59.1	250.0	200.0	29.3	66.2
67.0	500.0	25.0	58.9	250.0	200.0	29.9	65.9
66.5	500.0	25.5	58.6	250.0	200.0	30.5	65.6
66.0	500.0	26.1	58.4	250.0	200.0	31.1	65.3
65.5	500.0	26.6	58.1	250.0	200.0	31.7	65.0
65.0	500.0	27.2	57.8	250.0	200.0	32.3	64.7
64.5	493.1	27.7	57.5	250.0	200.0	32.9	64.3
64.0	486.2	28.3	57.3	250.0	200.0	33.5	64.0
63.5	479.4	28.8	57.0	250.0	200.0	34.1	63.7
63.0	472.6	29.4	56.7	250.0	200.0	34.7	63.3
62.5	465.8	29.9	56.4	250.0	200.0	35.3	63.0
62.0	459.1	30.5	56.1	250.0	200.0	35.8	62.6
61.5	452.4	31.0	55.8	250.0	200.0	36.4	62.3
61.0	445.7	31.5	55.5	250.0	200.0	37.0	61.9
60.5	439.1	32.1	55.1	250.0	200.0	37.6	61.6
60.0	432.5	32.6	54.8	250.0	200.0	38.1	61.2
59.5	425.4	33.1	54.5	250.0	200.0	38.7	60.8
59.0	418.3	33.6	54.2	250.0	200.0	39.2	60.4
58.5	411.3	34.2	53.8	250.0	200.0	39.8	60.1
58.0	404.3	34.7	53.5	250.0	200.0	40.4	59.7
57.5	397.4	35.2	53.1	250.0	200.0	40.9	59.3
57.0	390.5	35.7	52.8	250.0	200.0	41.5	58.9
56.5	383.6	36.2	52.4	250.0	200.0	42.0	58.5
56.0	376.8	36.7	52.1	250.0	200.0	42.5	58.1
55.5	370.0	37.2	51.7	250.0	200.0	43.1	57.7
55.0	363.3	37.7	51.3	250.0	200.0	43.6	57.2
54.5	357.8	38.2	51.0	250.0	200.0	44.1	56.8
54.0	352.4	38.7	50.6	250.0	200.0	44.7	56.4
53.5	346.9	39.2	50.2	250.0	200.0	45.2	56.0
53.0	341.5	39.7	49.8	250.0	200.0	45.7	55.5
52.5	336.2	40.1	49.5	250.0	200.0	46.2	55.1
52.0	330.9	40.6	49.1	250.0	200.0	46.7	54.6
51.5	325.6	41.1	48.7	250.0	200.0	47.2	54.2
51.0	320.4	41.6	48.3	250.0	200.0	47.7	53.7
50.5	315.2	42.0	47.9	250.0	200.0	48.2	53.3
50.0	310.0	42.5	47.5	250.0	200.0	48.7	52.8
49.5	305.4	43.0	47.0	250.0	200.0	49.2	52.3
49.0	300.8	43.4	46.6	250.0	200.0	49.7	51.9
48.5	296.2	43.9	46.2	250.0	200.0	50.2	51.4
48.0	291.7	44.3	45.8	250.0	200.0	50.6	50.9
47.5	287.2	44.8	45.3	250.0	200.0	51.1	50.4
47.0	282.8	45.2	44.9	250.0	200.0	51.6	49.9
46.5	278.4	45.6	44.5	250.0	200.0	52.1	49.5
46.0	274.0	46.1	44.0	250.0	200.0	52.5	49.0
45.5	269.7	46.5	43.6	250.0	200.0	53.0	48.5
45.0	265.4	46.9	43.1	250.0	200.0	53.4	48.0
44.5	261.6	47.4	42.7	250.0	196.2	53.9	47.4
44.0	257.8	47.8	42.2	250.0	192.5	54.3	46.9
43.5	254.0	48.2	41.8	250.0	188.8	54.7	46.4
43.0	250.3	48.6	41.3	250.0	185.1	55.2	45.9
42.5	246.6	49.0	40.9	246.6	181.5	55.6	45.4
42.0	243.0	49.4	40.4	243.0	177.9	56.0	44.8
41.5	239.4	49.8	39.9	239.4	174.3	56.5	44.3
41.0	235.8	50.2	39.4	235.8	170.8	56.9	43.8
40.5	232.3	50.6	39.0	232.3	167.3	57.3	43.2
40.0	228.8	51.0	38.5	228.8	163.9	57.7	42.7
39.5	225.7	51.4	38.0	225.7	160.5	58.1	42.2
39.0	222.7	51.7	37.5	222.8	157.2	58.5	41.6
38.5	219.8	52.1	37.0	219.8	153.8	58.9	41.1
38.0	216.8	52.5	36.5	216.9	150.6	59.3	40.5
37.5	213.9	52.8	36.0	214.0	147.3	59.6	39.9
37.0	211.1	53.2	35.5	211.1	144.2	60.0	39.4
36.5	208.3	53.6	35.0	208.3	141.0	60.4	38.8
36.0	205.5	53.9	34.5	205.5	137.9	60.8	38.3
35.5	202.7	54.3	34.0	202.7	134.8	61.1	37.7
35.0	200.0	54.6	33.5	200.0	138.5	61.5	37.1