

PW L1501



Ocean Going Floating Sheerleg 1,500T Lift Capacity

Principal Particulars:

Classification	: IS
Flag	: Kiribati
Port of Registry	: Tarawa
Year Built	: 1978
Length Overall	: 80.0 m
Beam Overall	: 36.0 m
Depth Moulded	: 6.00 m
Max Draught	: 4.50 m

Capacities:

Gross Tonnage	: 5,709 tons
Net Tonnage	: 1,712 tons
Fuel Tank	: 237 tons
Fresh Water	: 346 tons
Foam Capacity	: 8.8 m ³
Quarters	: 45 persons

Anchoring & Mooring Equipment:

Positioning Winches	: 4 Kawasaki
Line Pull	: 20/8 metric tons x 23.5/32.8 m/min
Brake Capacity	: 26 metric tons
Wire Size / Length	: 50 mm Dia / 600m
Anchor	: 4 x 10.6 metric tons / Stockless

Auxiliary winches	: 6 Kawasaki
Line Pull	: 15/7 metric tons x 31.2/40.7 m/min
Brake Capacity	: 19.5 metric tons
Wire Size / Length	: 50 mm Dia / 600m
Anchor	: 6 x 9.9 metric tons / Stockless

Mooring Winch	: 1 Kawasaki
Pulling Capacity	: 20 metric tons x 20 m/min
Bow Storm Anchor	: 19.5 metric tons
Anchor Chain	: U2 64 mm Dia 12 Shots @ 27.5M = 330 M

Sheerlegs:

Boom Length	: 90 m
Max Lifting Capacity	: 1,500 metric tons
Main Hook	: 2 x 750 metric tons at Boom Angle 65°
Auxiliary Hook	: 1 x 200 metric tons at Boom Angle 35°
Whip	: 5 x 12 metric tons
Lifting Height of Main Hook	: 66.5 m at Boom Angle 65°

Main Hoisting Winches	: 2 Double Drum
Line Pull	: 50.5 / 17.8 metric tons x 13.9 / 27.8 m/min
Brake Capacity	: 143 metric tons
Wire Size / Length	: 4 x 60 mm Dia / 1,280 m

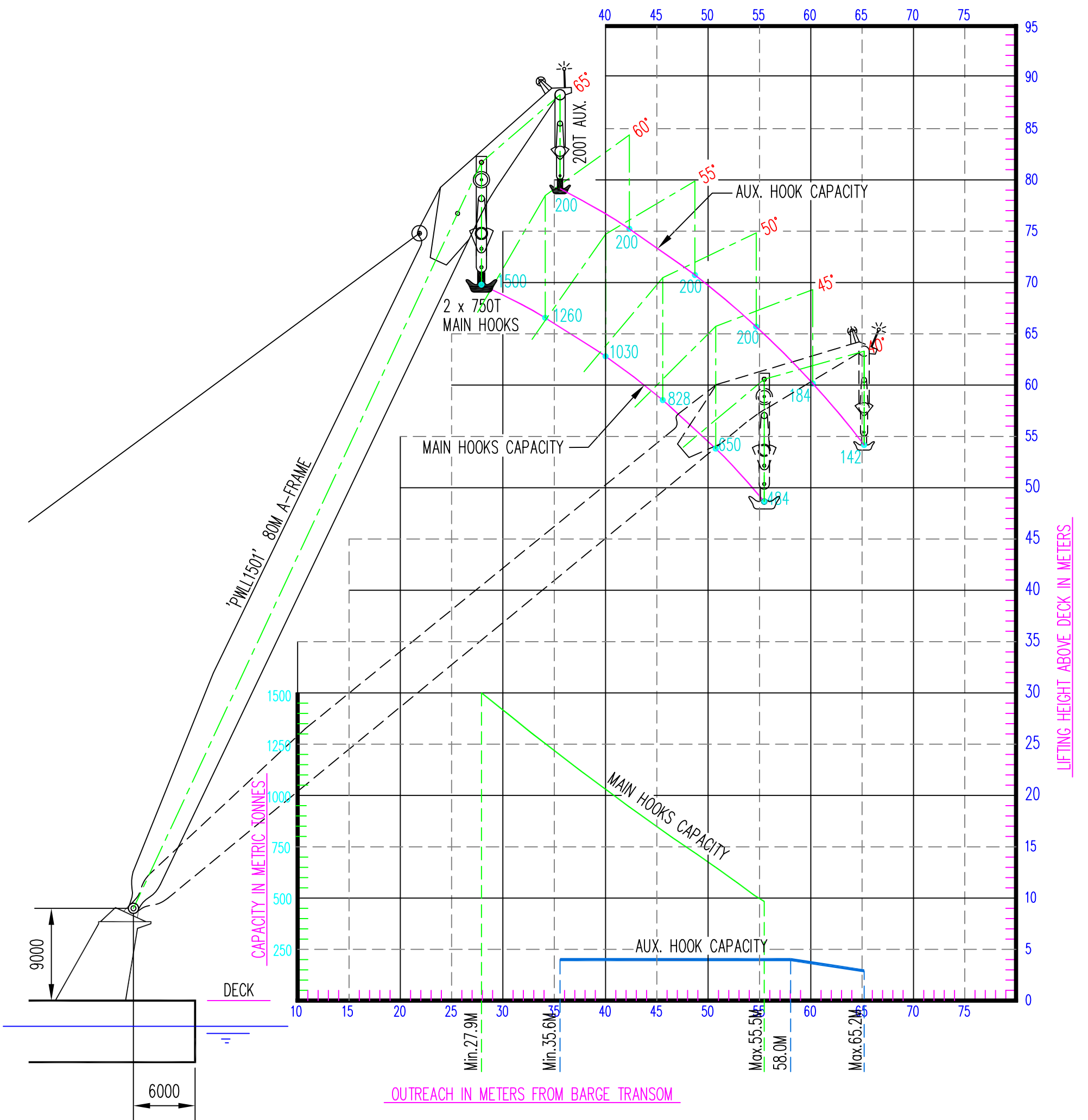
Auxiliary Hoisting winches	: 1 Double Drum
Line Pull	: 20/8 metric tons x 18.2 / 31.9 m/min
Brake Capacity	: 47.3 metric tons
Wire Size / Length	: 2 x 40 mm Dia / 1,000 m

Topping Winch	: 1 Double Drum
Line Pull	: 58.7 metric tons x 15 m/min
Brake Capacity	: 152.6 metric tons
Wire Size / Length	: 2 x 70 mm Dia 1,920 m

Guy Derrick (Cargo) Winches	: 4 Kawasaki
Line Pull	: 5 metric tons x 20 m/min
Wire Size / Length	: 4 x 22 mm Dia 60 m

Auxiliary Equipment

Generator	
Main	: 1 x 136 Kw (AC 225V, 3PH, 60Hz)
Emergency	: 1 x 104 Kw (AC 225V, 3PH, 60Hz)
Emergency	: 1 x 16 Kw (AC 225V, 3PH, 60Hz)



CAPACITY DIAGRAM 'PW L-1501'
SCALE 1:400

'PWL-1501' Lifting Capacity Table

Boom Angle	2 x Main Hooks			1 x Main Hook	Aux. Hook		
	Capacity (MT)	Outreach (m)	Hook Height (m)	Capacity (MT)	Capacity (MT)	Outreach (m)	Hook Height (m)
65.0	1500.0	27.9	69.8	750.0	200.0	35.6	79.2
64.5	1475.5	28.5	69.5	750.0	200.0	36.3	78.8
64.0	1451.1	29.2	69.2	750.0	200.0	36.9	78.4
63.5	1426.9	29.8	68.9	750.0	200.0	37.6	78.0
63.0	1402.7	30.4	68.6	750.0	200.0	38.3	77.7
62.5	1378.6	31.0	68.2	750.0	200.0	39.0	77.3
62.0	1354.7	31.7	67.9	750.0	200.0	39.7	76.9
61.5	1330.8	32.3	67.6	750.0	200.0	40.3	76.5
61.0	1307.1	32.9	67.3	750.0	200.0	41.0	76.1
60.5	1283.5	33.5	66.9	750.0	200.0	41.7	75.7
60.0	1260.0	34.1	66.6	750.0	200.0	42.3	75.2
59.5	1236.4	34.7	66.2	750.0	200.0	43.0	74.8
59.0	1213.0	35.3	65.8	750.0	200.0	43.6	74.4
58.5	1189.7	35.9	65.5	750.0	200.0	44.3	73.9
58.0	1166.5	36.5	65.1	750.0	200.0	44.9	73.5
57.5	1143.4	37.1	64.7	750.0	200.0	45.6	73.1
57.0	1120.5	37.7	64.4	750.0	200.0	46.2	72.6
56.5	1097.6	38.3	64.0	750.0	200.0	46.8	72.1
56.0	1075.0	38.9	63.6	750.0	200.0	47.5	71.7
55.5	1052.4	39.4	63.2	750.0	200.0	48.1	71.2
55.0	1030.0	40.0	62.8	750.0	200.0	48.7	70.7
54.5	1009.2	40.6	62.4	750.0	200.0	49.3	70.3
54.0	988.5	41.2	62.0	750.0	200.0	49.9	69.8
53.5	968.0	41.7	61.6	750.0	200.0	50.5	69.3
53.0	947.6	42.3	61.2	750.0	200.0	51.1	68.8
52.5	927.3	42.8	60.7	750.0	200.0	51.7	68.3
52.0	907.2	43.4	60.3	750.0	200.0	52.3	67.8
51.5	887.2	43.9	59.9	750.0	200.0	52.9	67.3
51.0	867.3	44.5	59.4	750.0	200.0	53.5	66.7
50.5	847.6	45.0	59.0	750.0	200.0	54.1	66.2
50.0	828.0	45.6	58.5	750.0	200.0	54.7	65.7
49.5	809.6	46.1	58.1	750.0	200.0	55.3	65.2
49.0	791.3	46.6	57.6	750.0	200.0	55.8	64.6
48.5	773.1	47.2	57.2	750.0	200.0	56.4	64.1
48.0	755.1	47.7	56.7	750.0	200.0	56.9	63.5
47.5	737.2	48.2	56.2	737.2	200.0	57.5	63.0
47.0	719.5	48.7	55.8	719.5	200.0	58.0	62.4
46.5	701.9	49.2	55.3	701.9	195.8	58.6	61.9
46.0	684.5	49.7	54.8	684.5	191.7	59.1	61.3
45.5	667.2	50.2	54.3	667.2	187.6	59.7	60.7
45.0	650.0	50.7	53.8	650.0	183.6	60.2	60.2
44.5	632.7	51.2	53.3	632.7	179.6	60.7	59.6
44.0	615.5	51.7	52.8	615.5	175.6	61.2	59.0
43.5	598.5	52.2	52.3	598.5	171.7	61.7	58.4
43.0	581.7	52.7	51.8	581.7	167.8	62.3	57.8
42.5	565.0	53.2	51.3	565.0	163.9	62.8	57.2
42.0	548.5	53.6	50.8	548.5	160.1	63.3	56.6
41.5	532.1	54.1	50.2	532.1	156.4	63.7	56.0
41.0	515.9	54.6	49.7	515.9	152.6	64.2	55.4
40.5	499.9	55.0	49.2	499.9	148.9	64.7	54.8
40.0	484.0	55.5	48.6	484.0	145.3	65.2	54.2