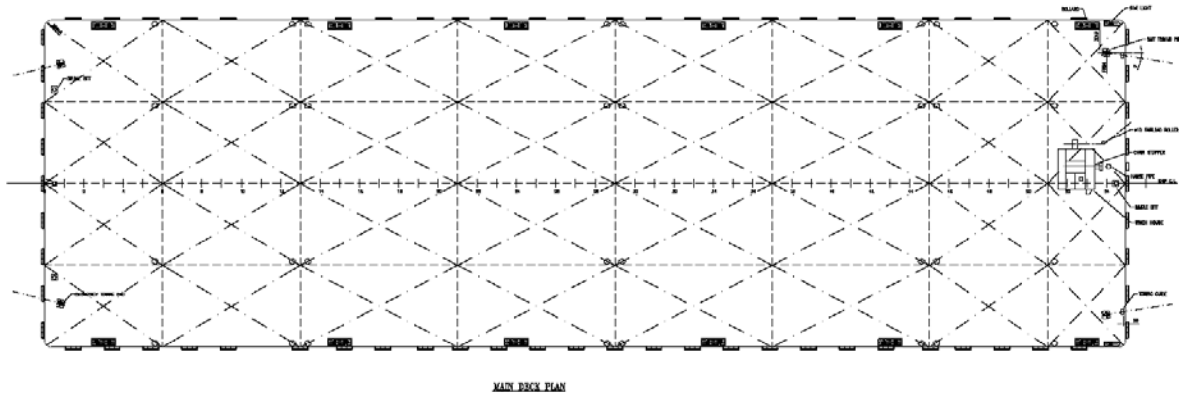
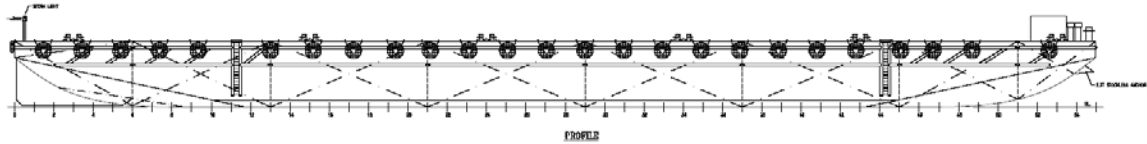


## Maritime Glory / Maritime Pride



### 330 X 100 X 20 ft / 11,500 (TONS) DWT / DECK/ TANK BARGES

Name of Vessel	<b>Maritime Glory, Maritime Pride</b>
Year Built / Registry	2007 / Singapore
Principal Dimensions	330 x 100 x 20 ft (100.58 x 30.48 x 6.1 m)
Classification	ABS + A1 Deck/ Tank Barge
Draft Loaded	4.749 m
NRT/ GRT	1,471/ 4,905
Deadweight	Approx 11,500 t
Deck Loading	15 t /m2
Hull Plating Thickness	Deck plating 20 mm, bottom plating 14 mm, side shell plating 16 mm
Bulkheads	3 longitudinal b/h plating thickness 12 mm 7 transverse b/h plating thickness 12 mm
Tanks	32 tanks ballastable through manholes on deck
Outfitting	1 x 2280 kg anchor with hand winch 6 sets double bitt bollards each Port and Starboard 2 sets towing brackets at bow and stern all fitted with chafing chains 58 heavy duty tyre fenders 32 manholes on deck one for each tank with recess type in cargo area