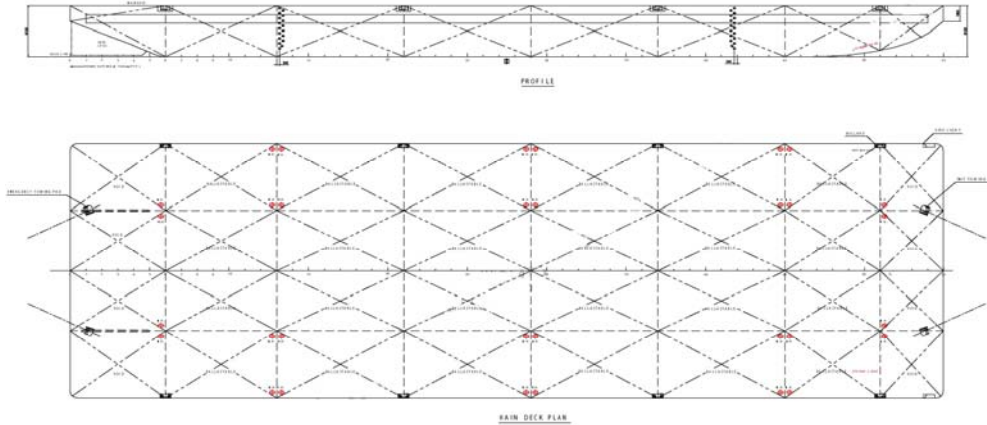



## Maritime Courage



### **330 X 100 X 20 ft / 11,000 (TONS) DWT / DECK/ BALLAST TANK BARGE**

|                        |  |
|------------------------|--|
| Name of Vessel         | <b>Maritime Courage</b>  |
| Year Built / Registry  | 2011 / Singapore   |
| Principal Dimensions   | 330 x 100 x 20 ft (100.58 x 30.48 x 6.10m)   |
| Classification         | ABS  A1 Deck/ Tank Barge  |
| Draft                  | 4.514 m  |
| GRT / NRT              | 4,951 t / 1,486 t  |
| Deadweight             | Approx 11,000 t  |
| Deck Loading           | 20 t /m2   |
| Hull Plating Thickness | Deck plating 20 mm, bottom plating 14 mm, side shell plating 14 mm   |
| Bulkheads              | 3 longitudinal b/h plating thickness 10 mm<br>7 transverse b/h plating thickness 10 mm   |
| Tanks                  | 32 tanks ballastable through manholes on deck  |
| Outfitting             | 1 x diesel engine driven steel winch with 1 x 240 ft galvanized wire rope,<br>1 x 2100 kg stockless anchor, 3 x navigational light stand, 2 x skegs,<br>8 x mooring bollards, 2 x Smit type towing pads,<br>Suitable no. of tyre fenders tied to eye pads on deck and aluminium anodes |
| Painting               | Internal and External hull are blasted and coated with 2 x Coaltar Epoxy paints.<br>Additional coating of 1 x tropical anti-fouling has been added to the bottom plating.<br>Deck plating is coated with 1 x Coaltar Epoxy paint.  |