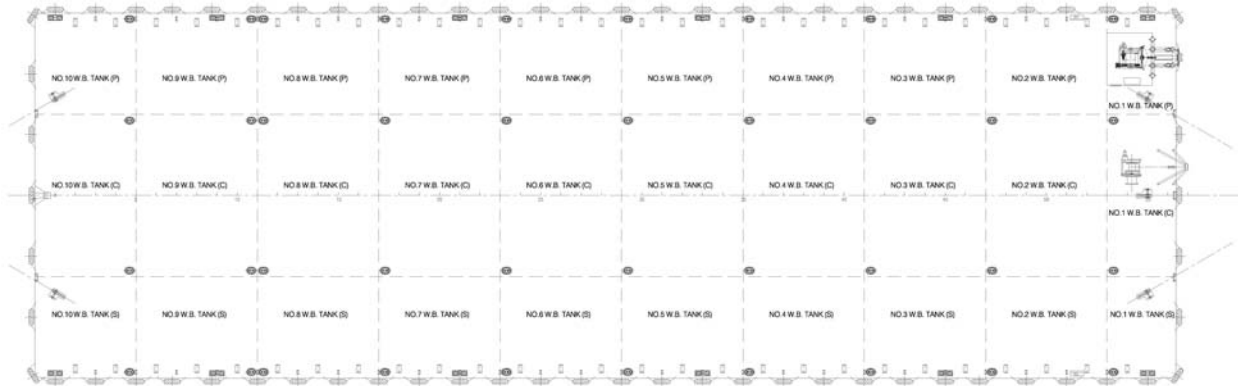


Maritime Amber / Maritime Diamond



282 X 90 X 18 ft / 7,500 (TONS) DWT / DECK / TANK BARGES

Name of Vessel	Maritime Amber, Maritime Diamond
Year Built / Registry	2015 / Singapore
Principal Dimensions	282 x 90 x 18 ft (85.95 x 27.43 x 5.49 m)
Classification	ABS + A1 +Deck Cargo and Ballast Tank Barge
Draft	14.17' (4.32m)
Deadweight	7,500 t (GRT 3410, NRT 1023)
Deck Loading	25 t/m ²
Hull Plating Thickness	Deck plating 20 mm, bottom plating 14 mm, side shell plating 14 mm
Bulkheads	2 longitudinal b/h plating thickness 12 mm 9 transverse b/h plating thickness 12 mm
Tanks	30 tanks ballastable through manholes on deck
Outfitting	Tow brackets 3 sets each fitted with chafing chains at bow and 2 sets at stern. 1 x 2200 kg anchor with diesel driven winch, 12 sets double bitt bollards. 30 manholes on deck one for each tank with recess type in cargo area. Vertical ladder 30 sets. 69 heavy duty tyre fenders dia 1400 mm, thickness 300 mm. Pigeon hole type personnel boarding ladder fitted at forward and aft port & starboard
Cargo stanchion	27 each Port and Starboard 1200 mm high 3048 mm apart from frame 2 to frame 54. Each made of welded combination beam with web 30 mm thick 450 mm high at top 600 mm high at bottom and flange 30 mm thick 300 mm wide all round. 54 padeyes each Port and Starboard fitted for cargo lashing.
Painting	Exterior and interior blasted to SA2.5 coated with International Marine Paints system. Tanks coated with tar Epoxy 2 x 125um.