

POSH HERMOSA



10,800 BHP / 120.88 TBP / DP2 / AHTS **Call Sign: 3FBG2**

Class Notation

BV: I+ HULL + MACH Tug; Fire Fighting Ship 2; Unrestricted Navigation; DYNAPOS AM/AT R

Principal Particulars

Flag	Panama
Year Built	2008
Place Built	Guanhai Shipbuilding, P. R. China
Design Draft	5.40 m
Max Summer Draft	6.00 m
Gross Tonnage	2,532.0 T
Net Tonnage	759.0 T
Deadweight (Max Draft)	2,432.0 T @ 6.00 m draft
Displacement	4,862.0 T
IMO No.	9489883
Design	Conan Wu & Associates 70 m. A.H/OSV

Dimensions

Length Overall	70.70 m
Beam Overall	16.00 m
Depth Moulded	7.20 m

Performance

Max Speed	12.00 kts
Economical Speed	10.00 kts

* Subject to actual weather and operating conditions

Cargo Deck

Deck Cargo Area	469.9 m ²
Deck Cargo Dimension	37.0 m x 12.7 m
Deck Cargo Capacity	800.0 T
Deck Strength	5.5 T/m ²
Reefer Points	10 (6 x 440v, 2 x 220v)

Capacities

Fuel Tank	969.1 m ³
Fresh Water *	680 m ³
Drill Water *	598.8 m ³ (shared with ballast water)
Ballast Water *	598.8 m ³ (shared with drill water)
Mud Tank *	524.6 m ³ (shared with brine)
Brine Tank *	524.6 m ³ (shared with mud)
Dry Bulk Tank	270.4 m ³ (in 4 tanks)

* Indicates tanks with shared capacity

Discharging Rates

Drill Water/Pump	1 x 150 m ³ /hr@90 m head
Fresh Water/Pump	2 x 150 m ³ /hr@90 m head
Fuel/Pump	2 x 150 m ³ /hr@90 m head
Brine/Pump	1 x 150 m ³ /hr@90 m head
Liquid mud/Pump	1 x 150 m ³ /hr@90 m head
Dry Bulk Tank	2 x 25.6 m ³ /min@70 m head

Accommodation

1 – Berth Cabins	4
2 – Berth Cabins	10
4 – Berth Cabins	4
Total (POB)	40

Main Engines & Generators

Main Engines	Bergen 2 x 4,002 kW each
Shaft Generators	Bergen 2 x 1,730 kW each
Diesel Generators	Caterpillar 2 x 590 kW @ 3 x 440 V 60 Hz
Emergency Generators	Caterpillar 1 x 99 kW

Thrusters & Propulsion

Bow Thruster	Rolls-Royce 1 x Tunnel Thruster @ 735 kW (11.0 T) Rolls-Royce 1 x FPP Retractable (13.5 T) Thruster
Stern Thruster	Rolls-Royce 1 x Tunnel Thruster @ 735 kW (11.0 T)
Propellers	MAN 2 x CP Propellers in fixed nozzles
Rudders	MAN 2 x independent high lift flat type

Deck Crane

Fixed Crane	SWL 6.2 T @ 5.0 m radius SWL 5.0 T @ 15.0 m radius
-------------	---

Anchor Handling/Tow Equipment

Tow/Anchor Handling Winch	Rolls-Royce 1 x Double Drum Waterfall, Low Pressure
Stall Pull Capacity	300.0 T
Brake Holding Capacity	450.0 T
Tow Drum Capacity	2,000 m x 76 mm dia. wire
Anchor Handling Capacity	2,000 m x 76 mm dia. wire
Secondary Winch Capacity	2,000 m x 76 mm dia. wire
Storage Reel Capacity	1 x 2,000 m x 76 mm dia wire
Tugger Winch	Rolls-Royce 2 x 17.0 T each
Capstan	2 x 10.0 T each
Shark Jaws	2 x Karmoy (SWL 300.0 T)
Tow Pins	2 x Karmoy (SWL 160.0 T)
Stern Roller	5.0 m x 2.5 m dia (SWL 350.0 T)
Gypsies	1 x 76.0 mm + 1 x 90.0 mm
Chain Locker	2 x 74.2 m ³

Tow/Anchor Handling Wires

Main Tow Wire	1,330.0 m x 76.0 mm dia wire
Spare Tow Wire	1,490.0 m x 76.0 mm dia wire
Anchor Handling Wire	525.0 m x 76.0 mm dia wire

Mooring Equipment

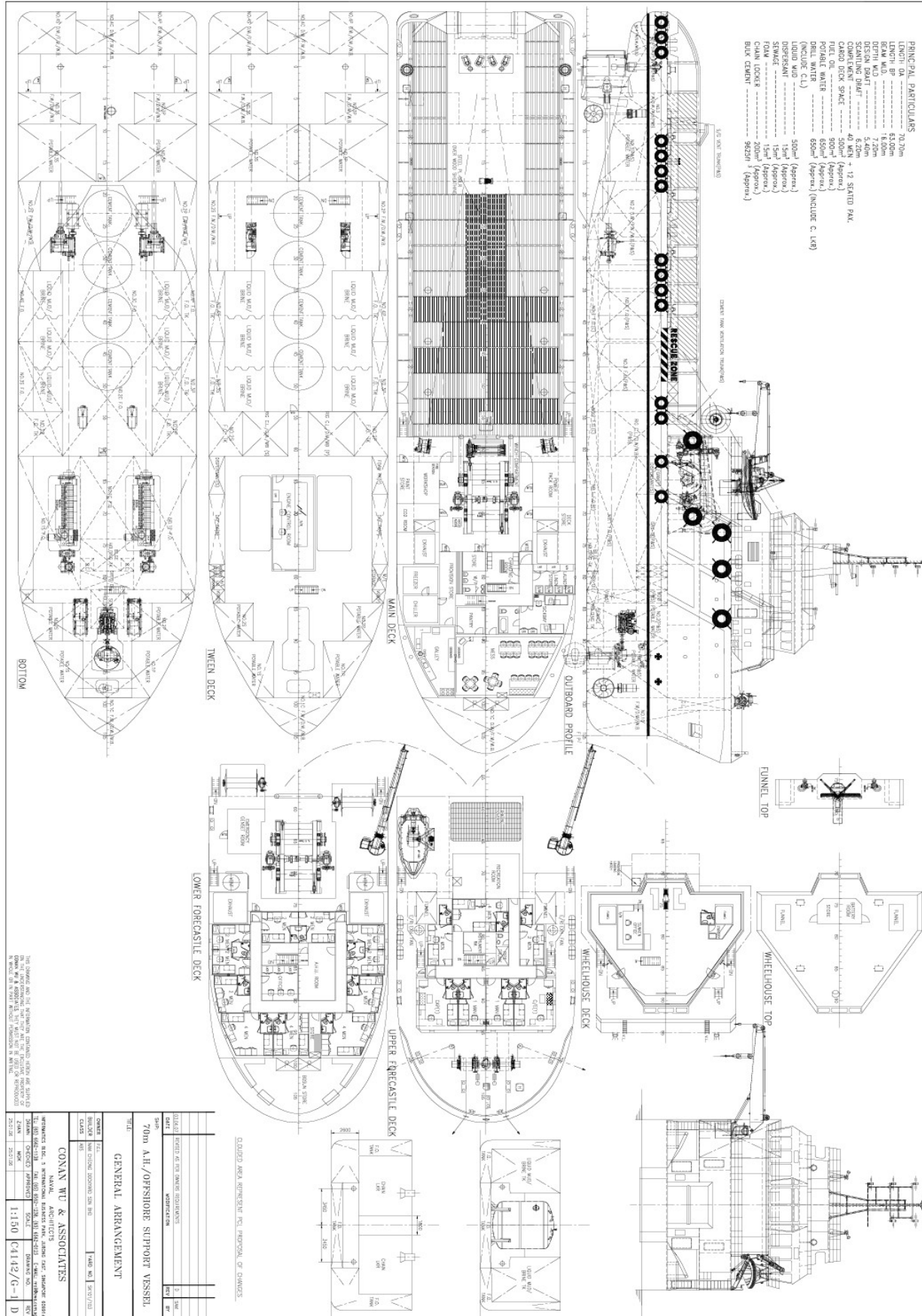
Anchor	2 x AC14; 1,920 kg each
Anchor Chain	2 x 412.5 m x 46.0 mm dia
Anchor Windlass	14.0 T @ 13.0 m/min

Dynamic Positioning System

DP Class	DP 2, Converteam ADP-2 system
References	2 x DGPS + 1 x Cyscan
VRU	2

Fire Fighting and Rescue

Firefighting System	FiFi 2
FiFi Pump	2 x 3,700 m ³ /hr
FiFi Monitors	4 x 1,800 m ³ /hr
Spray Booms	2 x 6.0 m, Fixed Nozzle
Dispersant Capacity	8 m ³
Foam Capacity	8 m ³
Rescue Boat	1 x 10 man/rigid/160 hp
Life Rafts	6 x 25 man + 2 x 20 man
Life Buoys	10
Life Jackets	105
Fixed H2S Detection System	Yes



PRINCIPAL PARTICULARS

LENGTH DA	70.20m
LENGTH BP	68.00m
BEAM MD	16.00m
DEPTH MD	7.20m
SCANTLING DRAFT	5.20m
COMPLEMENT	40 MEN + 12 STATED PAK.
CARGO DECK SPACE	500m ² (Aspxa)
POTABLE WATER	550m ³ (Aspxa)
DELL WATER	650m ³ (Aspxa) (INCLUDE C. L&B)
(INCLUDE C.L.)	
LIQUID WLD	500m ³ (Aspxa)
SPACE	1st (Aspxa)
FOAM	1st (Aspxa)
CHAIN LOCKER	200m ³ (Aspxa)
BUCK CEMENT	9025t (Aspxa)

GENERAL ARRANGEMENT

SHIP	7000 A.H. OFFSHORE SUPPORT VESSEL
DESIGNER	CONNAN WU & ASSOCIATES
DATE	1:150 C/14/2/G-1-D
SCALE	
PROJECT NO.	
DRAWING NO.	
DATE	
BY	
CHECKED BY	
APPROVED BY	

THIS DRAWING AND THE INFORMATION CONTAINED THEREIN ARE THE PROPERTY OF CONNAN WU & ASSOCIATES. IT IS TO BE USED ONLY FOR THE PROJECT AND VESSEL SPECIFICALLY IDENTIFIED HEREIN. ANY REUSE OR MODIFICATION OF THIS DRAWING WITHOUT THE WRITTEN PERMISSION OF CONNAN WU & ASSOCIATES IS STRICTLY PROHIBITED.

LOWER FORECASTLE DECK

DECK AREA REPRESENTING THE PREVIOUS OR CHANGES

UPPER FORECASTLE DECK

WHEELHOUSE DECK

FUNNEL TOP

WHEELHOUSE TOP

OUTBOARD PROFILE

MAIN DECK

TWEEN DECK

BOTTOM