

POSH CONQUEST



16,000 BHP / 200 TBP / DP2 / AHTS **Call Sign: 3ELC2**

Class Notation ABS +A1, Towing Vessel, AH, Fire Fighting Vessel Class 1, Ice Class D0, Offshore Support Vessel, (E), +AMS, +ACCU, +DPS-2

Principal Particulars

Flag	Panama
Year Built	2010
Place Built	Yuexin Shipbuilding Co. Ltd., China
Design Draft	5.50 m
Max Draft	6.82 m
Gross Tonnage	2,736.0 T
Net Tonnage	821.0 T
Deadweight (Max Draft)	2,629.0 T @ 6.82 m draft
Displacement	5,726.0 T
IMO No.	9451654
Design	HAVYARD 842

Dimensions

Length Overall	74.50 m
Beam Overall	17.20 m
Depth Moulded	8.00 m

Performance

Max Speed	12.00 kts
Economical Speed	10.00 kts

* Subject to actual weather and operating conditions

Cargo Deck

Deck Cargo Area	504.0 m ²
Deck Cargo Dimension	36.0 m x 14.0 m
Deck Cargo Capacity	1,000.0 T
Deck Strength	10.0 T/m ²
Reefer Points	4 (2 x 440v, 2 x 220v)

Capacities

Fuel Tank	1,146.0 m ³
Fresh Water *	709.0 m ³
Drill Water *	1330.0 m ³
Ballast Water *	1330.0 m ³
Mud Tank *	540.0 m ³
Brine Tank *	515.0 m ³
Dry Bulk Tank	220.0 m ³ (in 4 tanks)

* Indicates tanks with shared capacity

Discharging Rates

Drill Water/Pump	1 x 150 m ³ /hr@90 m head
Fresh Water/Pump	2 x 150 m ³ /hr@90 m head
Fuel/Pump	2 x 150 m ³ /hr@90 m head
Brine/Pump	1 x 75 m ³ /hr@90 m head
Liquid mud/Pump	2 x 75 m ³ /hr@90 m head
Dry Bulk Tank	1 x 50 m ³ /hr@20 m head

Accommodation

1 – Berth Cabins	6
2 – Berth Cabins	8
4 – Berth Cabins	2
6 – Berth Cabins	2
Total (POB)	42

Main Engines & Generators

Main Engines	MAN 2 x 8,000 BHP each
Shaft Generators	Cummins 2 x 2,000 kW each
Diesel Generators	Caterpillar 2 x 550 kW @ 3 x 440 V 60 Hz each
Emergency Generators	Volvo Penta 1 x 90 kW each

Thrusters & Propulsion

Bow Thruster	Rolls-Royce 1 x Tunnel Thruster @ 880 kW (15.0 T)/1,180 BHP
	Rolls-Royce 1 x Azimuth Thruster @ 880 kW (15.0 T)/1,180 BHP
Stern Thruster	Rolls-Royce 1 x Tunnel Thruster @ 880 kW (15.0 T)/1,180 BHP
Propellers	MAN 2 x CP Propellers in fixed nozzles
Rudders	MAN 2 x independent high lift flat type

Deck Crane

Fixed Crane	SWL 3.5 T @ 12.0 m radius
Movable Crane	SWL 4.5 T @ 13.0 m radius

Anchor Handling/Tow Equipment

Tow/Anchor Handling Winch	Oilstates 1 x double drum waterfall, low pressure
Stall Pull Capacity	402.0 T
Brake Holding Capacity	680.0 T
Tow Drum Capacity	5,200.0 m x 77.0 mm dia wire
Anchor Handling Capacity	5,200.0 m x 77.0 mm dia wire
Secondary Winch Capacity	1 fixed drum with 2 dividing flanges
Storage Reel Capacity	1,500.0 m x 77.0 mm dia wire
Tugger Winch	MacGregor 2 x 15.0 T each
Capstan	2 x 10.0 T each
Shark Jaws	2 x Triplex H-500 (SWL 500.0 T)
Tow Pins	2 x Triplex H-200 (SWL 600.0 T horizontal)
Stern Roller	6.0 m x 3.0 m dia (SWL 500.0 T)
Gypsies	2 x 76.0 mm (install) + 2 x 83.0 mm
Chain Locker	4 x 94.0 m ³

Tow/Anchor Handling Wires

Main Tow Wire	1,255.0 m x 76.0 mm dia wire
Spare Tow Wire	1,500.0 m x 76.0 mm dia wire
Anchor Handling Wire	2,000.0 m x 83.0 mm dia wire

Mooring Equipment

Anchor	2 x SPEK Type Anchor; 2,692 kg each
Anchor Chain	467.5 m x 38.0 mm dia
Anchor Windlass	7.80 T @ 12.0 m/min

Dynamic Positioning

DP Class	DP 2, Convertteam ADP21 - Independent Joystick
References	2 x DGPS + 1 x Cyscan

Fire Fighting and Rescue

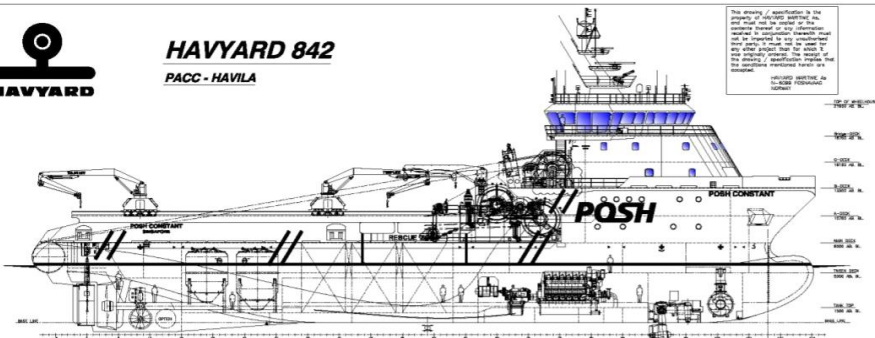
Firefighting System	FiFi 1
FiFi Pump	2 x 1,650 m ³ /hr
FiFi Monitors	2 x 1,200 m ³ /hr
Spray Booms	NIL
Dispersant	NIL
Rescue Boat	1 x 6 man/rigid/110 hp
Life Raft	6 x 25 man
Life Buoys	8
Life Jackets	50



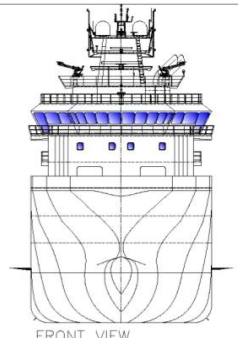
HAYWARD 842

PACC - HAVILA

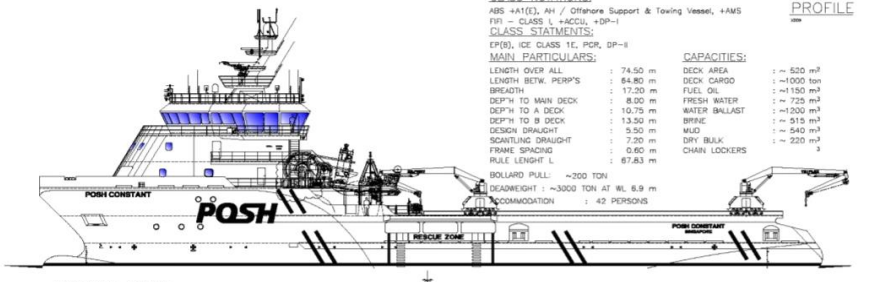
This drawing is applicable to the design of the vessel. It is not to be used for construction without the approval of the design office. The design office is not responsible for the accuracy of the information provided in this drawing.



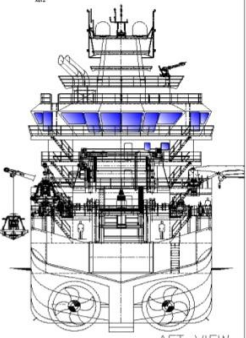
PROFILE



FRONT VIEW



PROFILE PORT



AFT VIEW

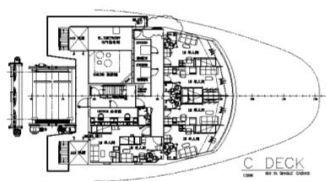
CLASS NOTATIONS:
 ABS-HAVILA, AH / Offshore Support & Towing Vessel, +AMS

CLASS STATEMENTS:
 DP(B), ICE CLASS 1E, PCR, DP-II

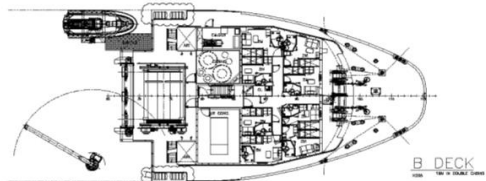
MAIN PARTICULARS:

LENGTH OVER ALL	: 74.50 m	CAPACITIES:	DECK AREA	: ~ 520 m ²
LENGTH BETW. PERP'S	: 64.80 m		DECK CARGO	: ~1000 ton
BREADTH	: 17.20 m		FUEL OIL	: ~1150 m ³
DEPTH TO MAIN DECK	: 8.00 m		FRESH WATER	: ~ 725 m ³
DEPTH TO A DECK	: 10.75 m		WATER BALLAST	: ~1200 m ³
DEPTH TO B DECK	: 13.50 m		BIRKE	: ~ 215 m ³
DESIGN DRAUGHT	: 5.50 m		MUD	: ~ 540 m ³
SCANTLING DRAUGHT	: 7.20 m		DRY BULK	: ~ 220 m ³
FRAME SPACING	: 0.80 m		CHAIN LOCKERS	: 3
RULE LENGTH L	: 67.83 m			

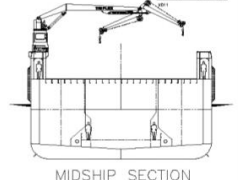
BOLLARD PULL: ~200 TON
 DEADWEIGHT: ~3000 TON @ 8.9 m
 ACCOMMODATION: 42 PERSONS



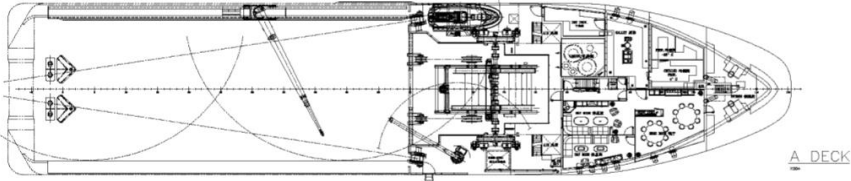
C DECK



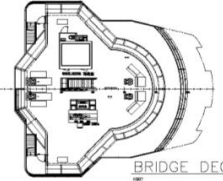
B DECK



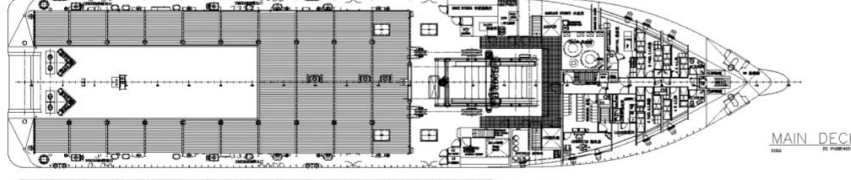
MIDSHIP SECTION



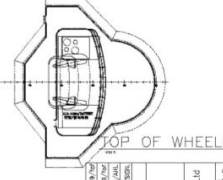
A DECK



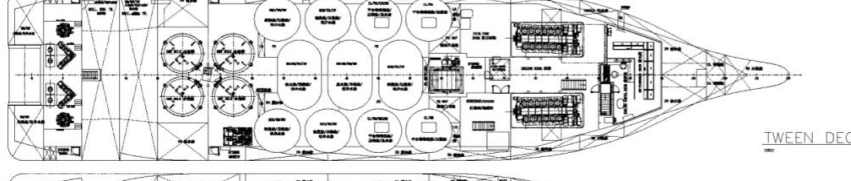
BRIDGE DECK



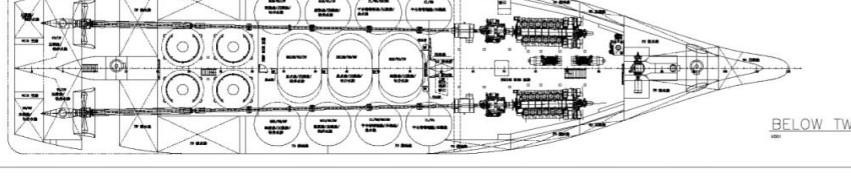
MAIN DECK



TOP OF WHEELHOUSE



TWEEN DECK



BELOW TWEEN DECK

DATE	21.04.2014	SCALE	1:200
PROJECT	UPDATES: 01.07.2014	CUSTOMER	PACC Offshore Pte Ltd
DESIGNER	03.08.2014	DATE	19.12.2014
CHECKER	03.08.2014	FILE NAME	0817-101-001
APPROVED	03.08.2014	PROJECT	74.5 x 17.2 M AHTS
DATE	03.08.2014	SCALE	1:200
PROJECT	03.08.2014	CUSTOMER	PACC Offshore Pte Ltd
DESIGNER	03.08.2014	DATE	19.12.2014
CHECKER	03.08.2014	FILE NAME	0817-101-001
APPROVED	03.08.2014	PROJECT	74.5 x 17.2 M AHTS

HAYWARD MARITIME AS
 Naval Architecture & Marine Engineering
 704-4770108 11000 Dock #4770108 11001
 704-4770108 11000 Dock #4770108 11001
 www.hayward.com

