

POSH DAUNTLESS


7,000 BHP / 90 TBP / DP2 / AHTS Call Sign: T2HH5
Class Notation ABS +A1, Towing Vessel, Fire Fighting Vessel Class 2, Offshore Support Vessel AH, Oil Recovery Capability Class 2, (E), +AMS, +DPS-2

Principal Particulars

Flag	Tuvalu
Year Built	2013
Place Built	PRM Offshore Heavy Industries Pte Ltd
Design Draft	6.25 m
Max Summer Draft	6.25 m
Gross Tonnage	3,208.0 T
Net Tonnage	962.0 T
Deadweight (Max Draft)	3,100 T @ 6.25 m
Displacement	5,914 T
IMO No.	9503079
Design	81m Anchor Handling / Supply Vessel

Dimensions

Length Overall	81.00 m
Beam Overall	16.80 m
Depth Moulded	7.50 m

Performance

Max Speed	12.00 kts
Economical Speed	10.00 kts

* Subject to actual weather and operating conditions

Cargo Deck

Deck Cargo Area	650 m ²
Deck Cargo Dimension	45.0 m x 14.0 m
Deck Cargo Capacity	1,200 T
Deck Strength	5.0 T/m ²
Reefer Point	6 x 440V

Capacities

Fuel Tank	590.0 m ³
Cargo Fuel Oil Tank*	830.0 m ³ (shared with base oil)
Fresh Water	370.0 m ³
Drill Water *	1,015 m ³ (shared with oil recovery)
Base Oil*	376.0 m ³ (shared with cargo fuel oil)
Mud Tank*	605.0 m ³ (shared with brine)
Brine Tank*	605.0 m ³ (shared with mud)
Dry Bulk Tank	339.6 m ³ (in 6 tanks)
Oil Recovery*	1,515 m ³ (shared with drill water)

* Indicates tanks with shared capacity

Discharging Rates

Drill Water/Pump	2 x 150 m ³ /hr @ 80 m head
Fresh Water/Pump	2 x 100 m ³ /hr @ 80 m head
Fuel/Pump	2 x 150 m ³ /hr @ 80 m head
Brine/Pump	2 x 150 m ³ /hr @ 80 m head
Liquid Mud/Pump	2 x 100 m ³ /hr @ 80 m head
Dry Bulk Tank	339.6 m ³ (in 6 tanks)

Accommodation

1 – Berth Cabins	2
2 – Berth Cabins	4
4 – Berth Cabins	14
Total (POB)	66

Main Engines & Generators

Main Engine	Yanmar 8EY26, 2 x 2,560 kW each
Generator	Caterpillar 3412, 6 x 590kW each + Caterpillar C4.4, 1 x 92kW

Thrusters & Propulsion

Bow Thruster	Kawasaki KT-88B3, 2 x 550 kW (2 x 9.0T)
Propeller	Kawasaki KST-220 ZC/B Rexpeller Azimuth Thruster in kort nozzle

Deck Crane

Fixed Crane	SWL 3.0T @ 8 m
-------------	----------------

Anchor Handling/Tow Equipment

Tow/Anchor Handling Winch	Rolls Royce Brattvaag SL150W-2T double drum waterfall type
Stall Pull Capacity	160.0 T
Brake Holding Capacity	225.0 T
Tow Drum Capacity	1,200.0 m x 52.0 mm dia wire
Anchor Handling Capacity	1,200.0 m x 52.0 mm dia wire
Storage Reel Capacity	3 x 1,800.0 m x 52.0 mm dia wire
Tugger Winch	2 x 10.0 T each
Capstan	2 x 5.0 T each
Shark Jaws	1 x Triplex H-200, SWL 200.0 T
Tow Pins	1 x Triplex S-200, SWL 200.0 T
Stern Roller	5.0 m x 2.5 m dia, SWL 300.0 T

Tow/Anchor Handling Wires

Main Tow Wire	1,000.0 m x 52.0 mm dia wire
Spare Tow Wire	1,000.0 m x 52.0 mm dia wire
Anchor Handling Wire	1,000.0 m x 52.0 mm dia wire

Mooring Equipment

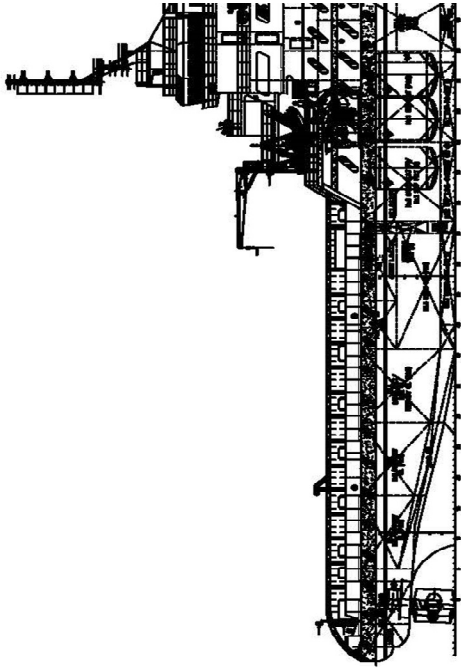
Anchor	2 x 2,500 kg HHP Anchor
Anchor Chain	2 x 17 shackles x 42.0 mm dia
Anchor Windlass	13.0 T @ 0-12 m/min

Dynamic Positioning System

DP Class	DP 2 L3 NMS6000
References	2 x DGPS + 1 x Cyscan
VRU	2

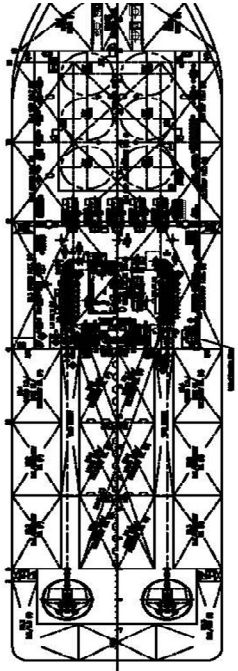
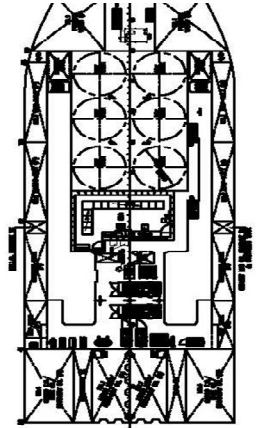
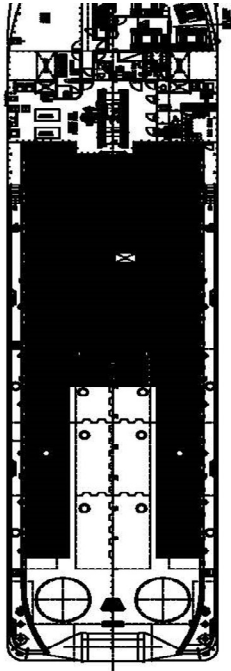
Fire Fighting and Rescue

Firefighting System	FiFi 2
FiFi Pump	2 x 1,800 m ³ /hr + 1 x 3,600 m ³ /hr
FiFi Monitor	4 x 1,800 m ³ /hr
Spray Boom	2 x 6.0 m
Dispersant Capacity	29.0 m ³
Foam Capacity	29.0 m ³
Rescue Boat	1 x 10-man rigid hull waterjet FRC, 218 hp, 20 kts
Life Raft	8 x 25-man
Life Buoy	12
Life Jacket	90
Fixed H2S Detection System	Yes



11,00m
 16,50m
 18,80m
 7,50m
 5,50m
 6,35m
 18 (18E)
 : 12 (2D)

- 355x3
- 615x3
- 304x3
- 304x3
- 304x3
- 304x3
- 304x3
- 304x3
- 304x3
- 304x3



1	2	3	4	5	6	7	8	9	10	11	12	13	14	15	16	17	18	19	20	21	22	23	24	25	26	27	28	29	30	31	32	33	34	35	36	37	38	39	40	41	42	43	44	45	46	47	48	49	50	51	52	53	54	55	56	57	58	59	60	61	62	63	64	65	66	67	68	69	70	71	72	73	74	75	76	77	78	79	80	81	82	83	84	85	86	87	88	89	90	91	92	93	94	95	96	97	98	99	100
---	---	---	---	---	---	---	---	---	----	----	----	----	----	----	----	----	----	----	----	----	----	----	----	----	----	----	----	----	----	----	----	----	----	----	----	----	----	----	----	----	----	----	----	----	----	----	----	----	----	----	----	----	----	----	----	----	----	----	----	----	----	----	----	----	----	----	----	----	----	----	----	----	----	----	----	----	----	----	----	----	----	----	----	----	----	----	----	----	----	----	----	----	----	----	----	----	----	----	-----

PLY VESSEL
 FT
 L. 180.000
 POWER PER 100
 20/C-14-14
 18.000.000
 18.000.000
 18.000.000