

POSH RAPID



8,000 BHP / 105 TBP / DP2 / AHTS Call Sign: 9V8662

Principal Particulars:

Flag	: Singapore
Year Built	: 2011
Place Built	: Paxocean Engineering Zhuhai Co., China
Length Overall	: 71.50 m
Length B.P.	: 61.20 m
Beam Overall	: 16.60 m
Depth Moulded	: 7.20 m
Design Draft	: 4.50 m
Scantling Draft	: 5.90 m
IMO No.	: 9587922
Official No.	: 396075

Classification:

ABS +A1, Towing Vessel, Fire Fighting Vessel Class 1, Offshore Support Vessel, (E), +AMS +ACCU + DPS-2, ES2020

Capacities:

Gross Tonnage	: 2588 tons
Net Tonnage	: 766 tons
Deadweight	: 1057 tons@4.5m draft
	: 2457 tons@5.9m draft
Fuel Tank	: 763 m ³
Potable Water	: 541 m ³
Drill Water	: 1524 m ³
Mud Tank	: 448 m ³
Brine	: 312 m ³
Foam	: 10 m ³
Dispersant	: 13 m ³
Deck Cargo Area	: 450 m ² (approx. 35m x 12.8m)
Deck Cargo	: 900 tons
Cargo Deck Load	: 10T/m ² for area abt 160 m ²
Reefer Points	: 4 (2x440v, 2x220v)

Speed/Fuel:

Max Speed	: 14 kts
Quality of Fuel	: MGO

Discharging Rates:

Drill Water/Pump	: 1 x 150 m ³ /hr@75m head
Fresh Water/Pump	: 1 x 150 m ³ /hr@75m head
Fuel/Pump	: 1 x 150m ³ /hr@70m head
Brine/Pump	: 1 x 100 m ³ /hr@75m head
Liquid mud/Pump	: 1 x 100 m ³ /hr@75m head
Loading Computer	: Bridge control
Flow Meter	: 1 for FO with printer output

Bulk Plant:

249.2 m³ in 4 tanks (
Working pressure 6 bar; Refrigeration Air Dryer units

Accommodation:

Officer/Crew	: 17
Berth Total	: 40 (1manx4, 2menx4, 4menx7)
Cabins Total	: 15
Hospital	: 1
Air conditional throughout	

Machinery & Equipment:

Main Engines	: 2 x MAN B&W 8L27/38, total output 2 x 3,970BHP @ 800RPM
Generators	: 2 x 1200kW Shaft generators Leroy Somer @440V 3Ph 60Hz
	: 2 x 370kW diesel alternators Cat3408C @440V 3Ph 60Hz
	: 1 x 122kW emergency diesel alternator Volvo Penta @440V 3Ph 60Hz.
Propellers	: 2 x 3.4M CP propellers in fixed nozzles, 2 independent high lift type rudders
Bow Thruster	: 2 x 450kW CP rated 7.1T Tunnel thruster
Stern Thruster	: 1 x 450kW CP rated 7.1T Tunnel thruster
Deck Crane	: 5T Knuckle Boom @ 18m radius (mounted on stbd side aft of accom)

Tow/Anchor-handling Equipment:

Tow/AH Winch	: 1 x double drum waterfall, low pressure; Stall Pull 200T Brake holding 300T Brake holding capacity @400 tons; Rig Chain size 76mm dia
Wire Drum	: 2 x 1500m each @ 64mm dia wire
Storage Drum	: 1 x 5T @ 0-30m/min 1500m 64mm sw rope
Tugger Winch	: 2 x 10T each @ up to 16m/min
Shark Jaw	: 1 x Triplex H200, SWL 200 tons
Tow Pin	: 1 x Triplex S115, SWL 115 tons
Capstans	: 2 x 5T each @ 0-15m/min
Stern Roller	: 1 x 300 tons SWL, 6m x 2m dia
Grapnel Hook	: 1 x 110 tons
J Hook	: 1 x 110 tons
Wildcats	: 2 units
Chain Lockers	: 2 x 80m ³

Towing / AH Wires:

Main Tow Wire	: 1500m x 56mm dia
AH Wire	: 350m x 64mm dia
Spare tow Wire	: 1500m x 56mm dia
Pennant Wire	: 64mmx100m & 64mmx60m with both end aluminum mechanical spliced thimble

Mooring Equipment:

Windlass	: 10T @ 9m/min for chain cables
Anchors	: 2 x AC-14 Stockless anchors each 2140kg
Cables	: 350m x 38mm dia

DP/Joystick Control:

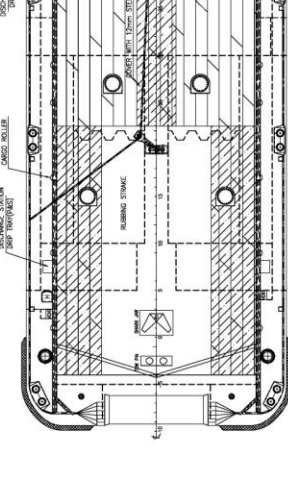
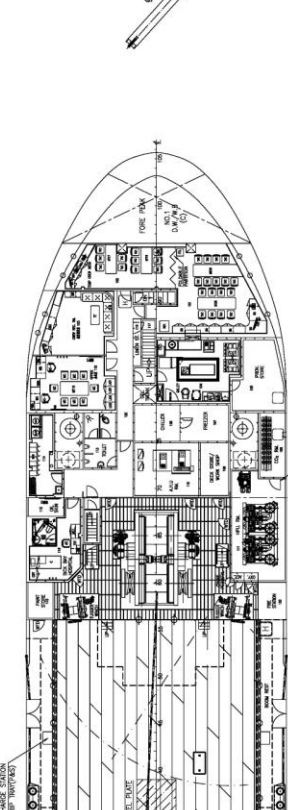
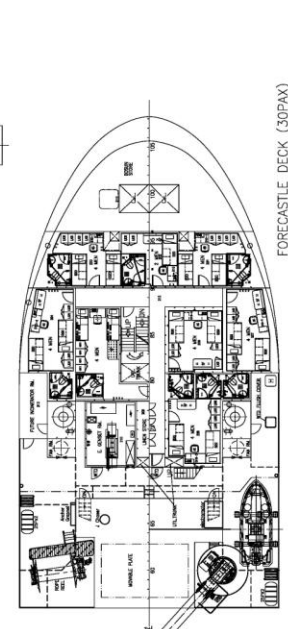
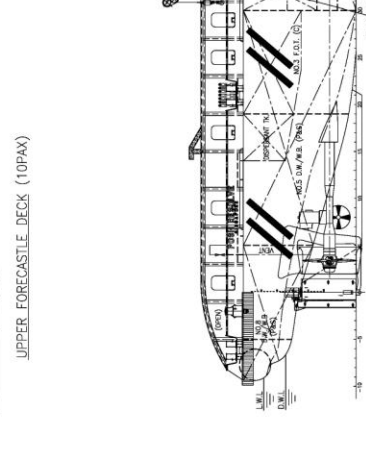
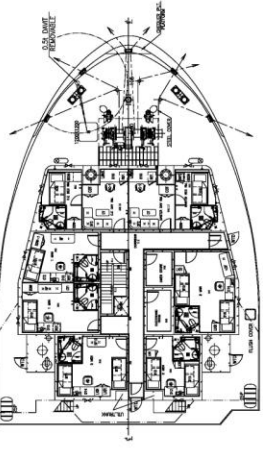
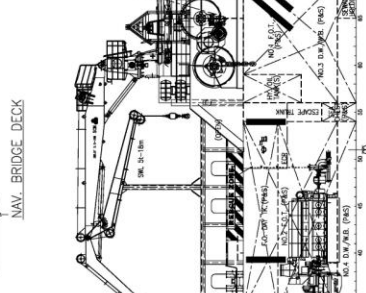
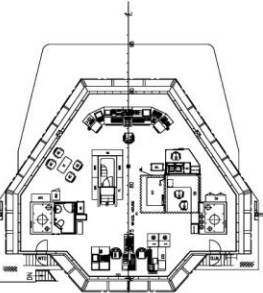
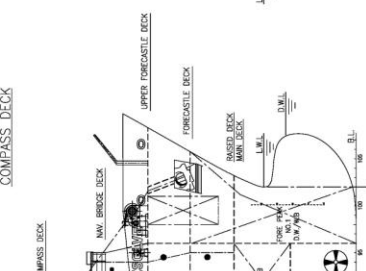
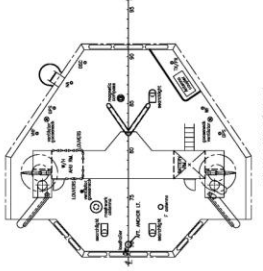
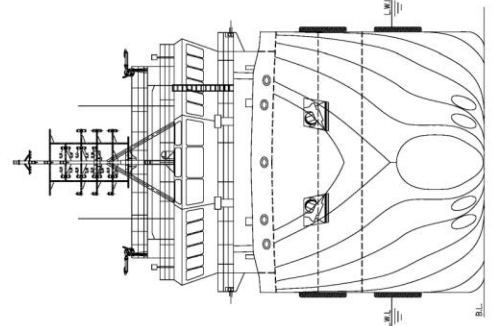
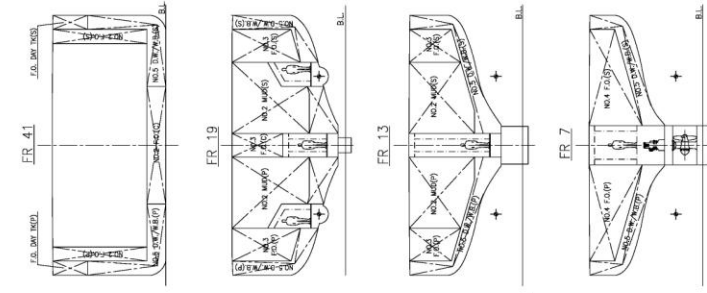
Converteam Independent Joystick (IJS) ADP-2 system

Fifi 1 System/Oil Pollution Control:

2 x 1650m ³ /hr @ 140m head; Class FiFi I, Dispersant	
Foam Tank	: 10.65 m ³
Dispersant Boom	: 2 x 6m max. turning radius located on port and starboard

Navigation & Communication Equipment:

HF/FM/Telex	: Furuno FS-2570
VHF fixed	: 2 x Furuno FM-8800S
VHF portable	: McMurdo R2
Inmarsat C	: Furuno FELCOM 15 SSAS
Navtex	: Furuno NX-700B
Autopilot	: SIMRAD AP-50
Radar ARPA	: Furuno FAR 21x7 / FR1510-3
Surface plotting	: Yes
DGPS	: Furuno GP-150
Gyro	: SIMRAD GC 80
Echo Sounder	: Furuno FE 700
AIS Transponder	: Furuno FA 150
Speed Log	: Furuno DS-80
GMDSS Radio	: 3 pcs, McMurdo R2
Magnetic Compass	: SAURA Keiki Seisakusho



PRINCIPAL PARTICULARS

LENGTH OA	71.50m
LENGTH BP	61.20m
BEAM MLD.	16.60m
DEPTH MLD.	7.20m
DRAFT DESIGNED	4.50m
DRAFT SCANTLING	5.90m
COMPLEMENT	40 MEN
CARGO DK. LOADING	107/M ² FR-5~23 57/M ² FR23~56

CLASS: ABS #1 © OFFSHORE SUPPORT VESSEL,
TOWING VESSEL, FIRE FIGHTING CLASS 1
#AMS #ACU #DPS-2, ES2020

PaxOcean
PACIFIC OFFSHORE SERVICES HOLDINGS PTE LTD
PaxOcean Engineering Zhuhai Co. Ltd
珠海太平洋船務有限公司

DESIGN NO.: 1711
CLASS NO.: 1711
DATE: 11.12.2013
DRAWN BY: LIAO SHAO
CHECKED BY: LIAO SHAO
DATE: 11.12.2013

PROJECT: 71.15K OFFSHORE SUPPORT VESSEL
71.15K 離岸支援船

DATE: 2013.12.13