

POSH TERASEA OFFSHORE PTE LTD

No. 1 Kim Seng Promenade #06-01
Great World City, Singapore 237994
Tel +65 6839 6500 / Fax +65 6264 4190
marketing@poshterasea.com.sg



TERASEA OSPREY



16,300 BHP / 200 TBP AHT / DP1 / Ocean Towing / Salvage Tug Call Sign: 9V9967

Principal Particulars

Flag	: Singapore
Year Built	: In service FEB 2014
Place Built	: JMU, Japan
Length Overall	: 75.30 m
Length B.P.	: 65.00 m
Beam Overall	: 18.00 m
Depth Moulded	: 8.00 m
Design Draft	: 6.00 m
IMO No.	: 9658264
Official No.	: 397800

Classification

ABS + A1 Towing Vessel, AH/Offshore Support Vessel, Fire Fighting Vessel Class 1, +AMS, Oil Recovery Capability 1, DP1

Capacities

Gross Tonnage	: 3513 tons
Net Tonnage	: 1053 tons
Deadweight	: 3369 tons
Heavy Fuel Oil	: 2200 m ³
Diesel Fuel Oil	: 300 m ³
Potable Water	: 300 m ³
Lube Oil	: 40 m ³
Foam Capacity	: 20 m ³
Dispersant	: 18 m ³
Max Speed	: 15 knots
Endurance	: 45 days towing at sea
Deck Loads	: From frame -3 to 16: 10 tons/m ² : From frame 16 to 49: 5 tons/m ²
Deck Space	: 450 m ²

Accommodation

One Man Cabin	: 14 x 1 berth cabin
Two Men Cabin	: 5 x 2 berths cabin
Total Complement	: 26 men

Machinery & Equipment

Main Engines	: 2x Wartsila 12V32 Total output 16,300BHP
Generators	: Main generators: 2 x 400kW, 420 V, 50Hz; Shaft generators 2 x 1200 kW, 420V, 50Hz; Emergency generator: 60kW, 420V, 50Hz
Steering gear	: 2 x independent, electro-hydraulic rotary type
Propellers	: 2 x Controllable Pitch Propellers, 4 blade in nozzles
Rudders	: 2 x high lift flap
Bollard Pull	: 200 tons
Bow Thruster	: Electric motor driven tunnel type, 12 tons
Stern Thruster	: Electric motor driven tunnel type, 10 tons
Deck Crane	: Electro-hydraulic, knuckle type, 5 tons@ 16m radius
Ballast water treatment system:	Ultra violet with filter type, treatment capacity 60mm ³ /hr

Tow/Anchor handling Equipment

Tow/AH Winch	: 1 x Fukushima, DDW-350H-4M, double drum waterfall type, brake holding capacity @450 tons (1st layer)
Towing wire drum/AH capacity:	76 mm x 1900m, both drums with spooling device
Spare wire reels	: 2 x 76mm x 1900 m @10 tons (1st layer)
Tugger Winch	: 2 x Electro-hydraulic, each 20 tons @15m/min
Windlass	: 1 x Fukushima, Electro-hydraulic, 2 x cable lifters, 2 x warping ends, 2 x mooring drums. 15 tons x 9m/min
Shark Jaw	: 1 x Karm fork, 450 tons SWL
Towing Pin	: 1 pair x Karmoy winch, 200 tons SWL
Capstans	: 2 x Electro-hydraulic each 15 tons @15m/min
Stern Roller	: 1 x 450 tons SWL, 5m x dia 3m

DP System / Joystick Control

CONVERTEAM Independent Joystick (IJS) ADP-1 system

Life Saving Equipment

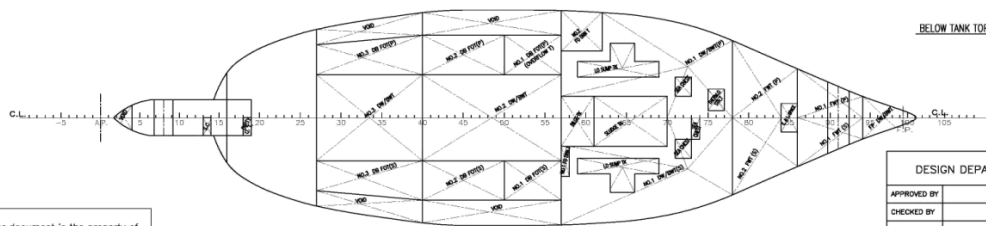
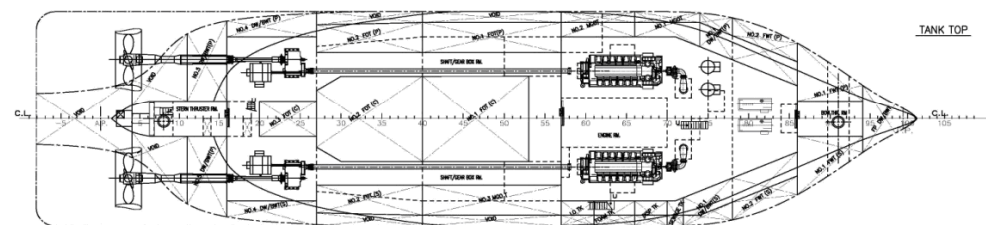
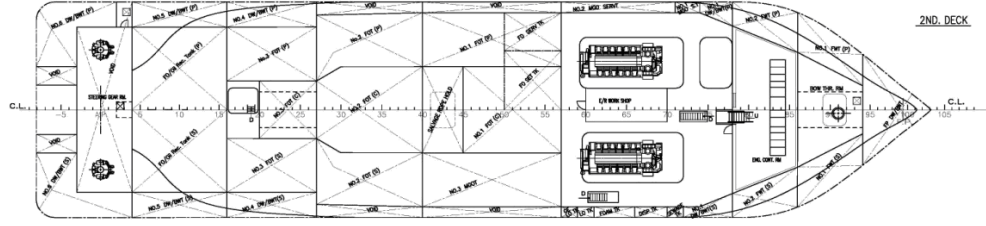
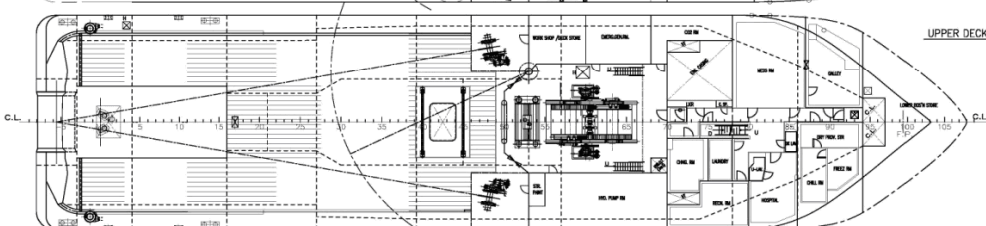
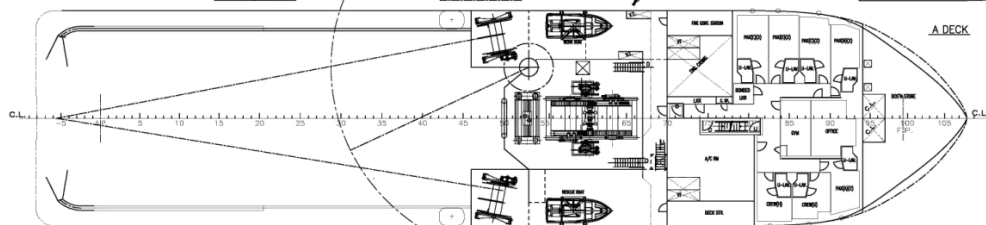
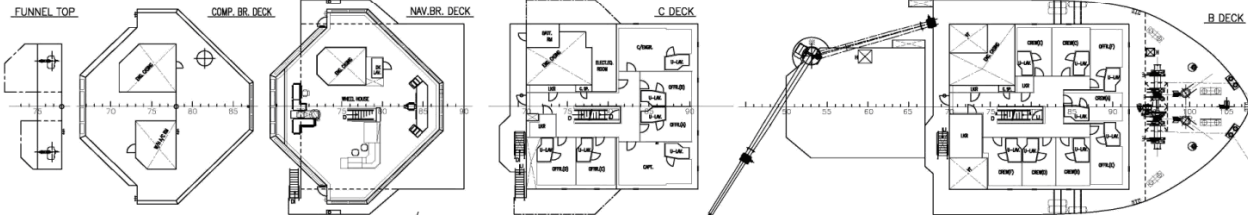
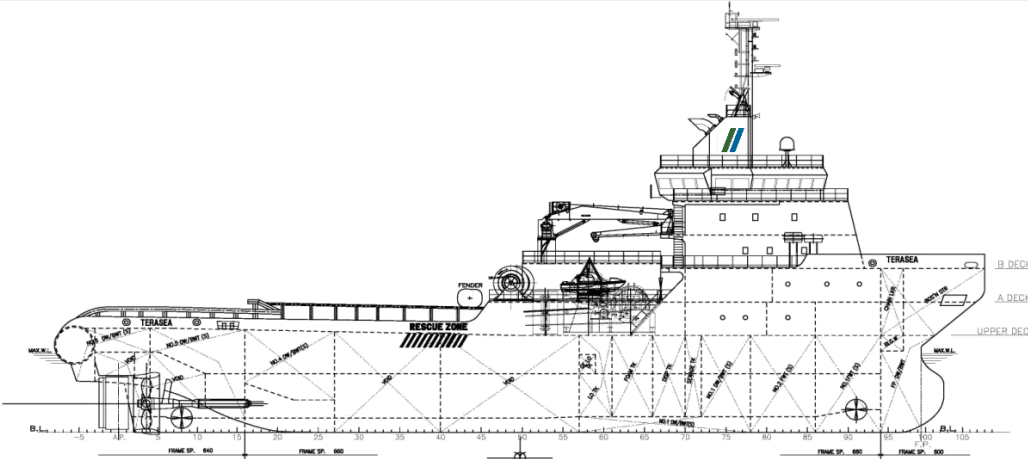
Rescue Boat	: 6 person capacity on single point hanging davit type
Work Boat	: 6 person capacity with launch davit
Life rafts	: 6 x 16 person capacity

FiFi 1 System


Fire Pumps	: Two seawater centrifugal pumps, each capacity of 1760m ³ /hr @ pump speed of 1800RPM
Water/Foam Monitor	: Two dual foam/water monitor each capacity of 1200 m ³ /hr at 11.5 bars
Air/Foam Liquid Tank	: 24m ³
Spray Boom	: 2 x 6m aluminum boom with nozzle
Oil Dispersant Tank	: 18m ³

PRINCIPAL PARTICULARS

LENGTH(O.A) APPROX. 75.3m
 LENGTH(B.P) 65.00m
 BREADTH(MLD) 18.00m
 DEPTH(MLD) 8.10m
 DESIGNED DRAFT(MLD) 6.00m
 MAX. SUMMER DRAFT(MLD) 6.60m



This drawing or document is the property of Universal Shipbuilding Corp. and must in no case wholly or partially be copied, shown or given to a third party without the expressed consent of Universal Shipbuilding Corp.

DESIGN DEPARTMENT	HULL No. SNO.0074/75	16,300 BHP OCEAN TOWING/SALVAGE TUG
APPROVED BY	GENERAL ARRANGEMENT  POSH TERASESA	
CHECKED BY		
DESIGNED BY		
DRAWN BY		
DATE OF DRAWING		
SCALE 1/200	Universal Shipbuilding Corporation	DWG. NO. 4011100 REV. 0