

POSH TERASEA OFFSHORE PTE LTD

No. 1 Kim Seng Promenade #06-01
Great World City, Singapore 237994
Tel +65 6839 6500 / Fax +65 6264 4190
marketing@poshterasea.com.sg



SALVISCOUNT



13,500 BHP/ 162 TBP AHT/ Ocean Towing/ Salvage Tug **Call Sign : 9V6419**

Principal Particulars

Flag	: Singapore
Year Built	: 2004
Place Built	: Singapore
Length Overall	: 75.00 m
Length B.P.	: 66.60 m
Beam Overall	: 18.00 m
Depth Moulded	: 8.00 m
Design Draft	: 6.00 m
IMO No.	: 9276676
Official No.	: 390205

Classification

LRS + 100A1 Tug, Fire Fighting Ship 1 (2,400m³/hr) with Water Spray, SCM + LMC

Capacities

Gross Tonnage	: 3342 tons
Net Tonnage	: 1002 tons
Deadweight	: 3230 tons
Heavy Fuel Oil	: 2397 m ³
Diesel Fuel Oil	: 418 m ³
Potable Water	: 200 m ³
Lube Oil	: 46 m ³
Foam Capacity	: 11 m ³
Dispersant	: 11 m ³
Speed	: 15 knots
Endurance	: 40 days towing at sea
Deck Loads	: 5 tons / m ²
Deck Space	: 341m ²

Accommodation

One Man Cabin	: 6
Two Men Cabin	: 3
Four Men Cabin	: 6
Total Complement	: 36 men

Machinery & Equipment

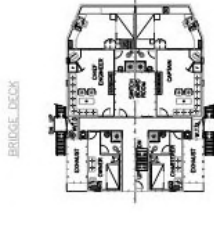
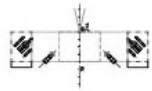
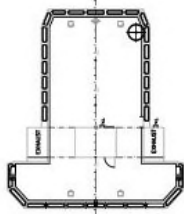
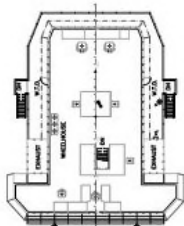
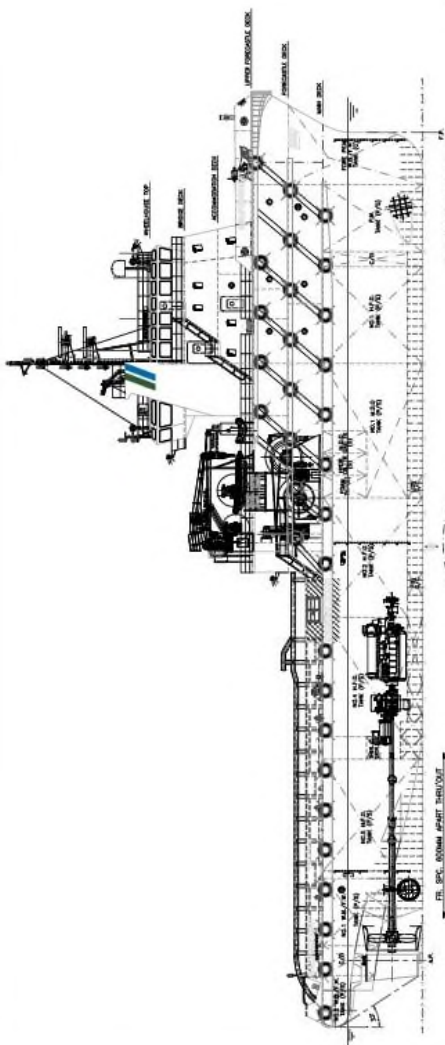
Main Engines	: 4 x Wartsila VASA 6R32LNE Total output 13,500BHP @750RPM
Generators	: 2 x 1200kW Shaft generators @415V 3Ph 50Hz : 2 x 350kW @1800RPM @415V 3Ph 50Hz : 1 x 105kW @1800RPM.
Propellers	: Twin screw Controllable Pitch (Lips)
Bollard Pull	: 162 tons
Bow Thruster	: 1 x Lips 12 tons
Stern Thruster	: 1 x Lips 10 tons
Deck Crane	: 2 x Electro-hydraulic 360° slewing each 8 tons SWL @ 7m

Tow/Anchor handling Equipment

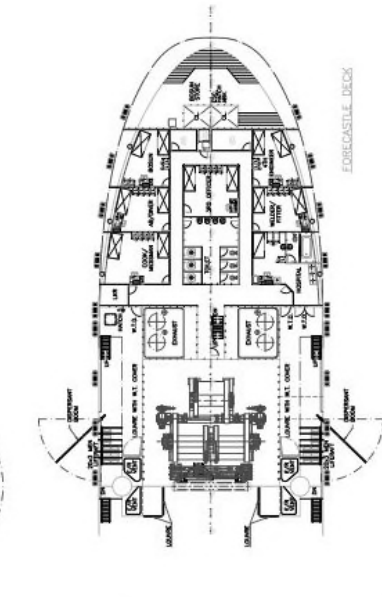
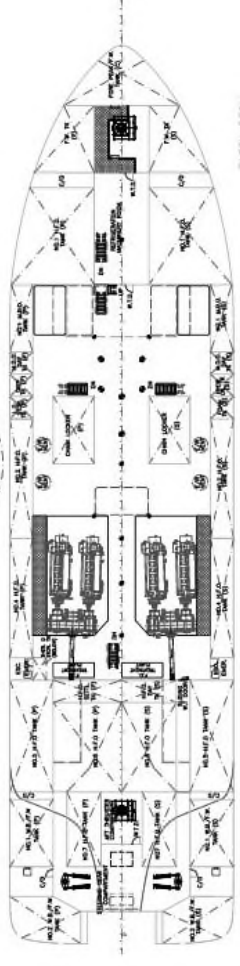
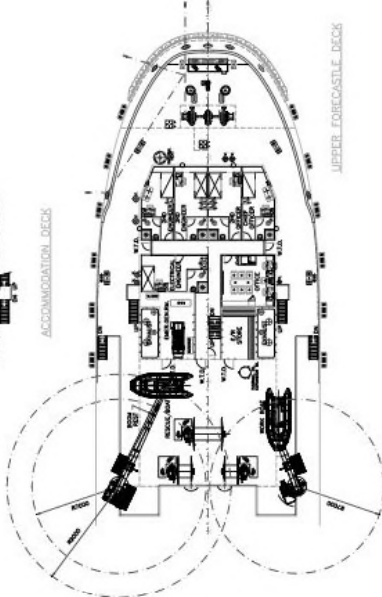
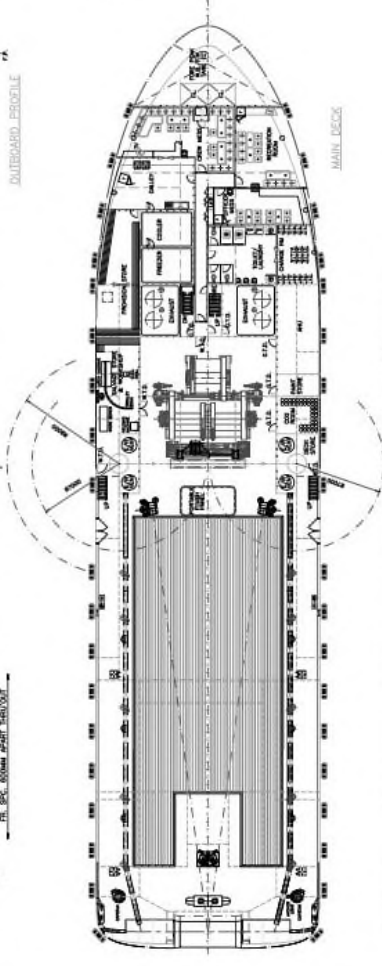
Tow/AH Winch	: Brattvaag Hydraulic Triple Drum, Waterfall Type. Brake holding capacity @400 tons. 2 x declutchable A/H drum for dia 76mm, 1500m wire. 1 x declutchable towing drum for dia 76mm, 1500m wire. Two non declutchable hardwelded cable lifters for 84mm chain fitted outside of the anchor handling drum
Tugger Winch	: 2 x Electro-hydraulic, each 10 tons @15m/min
Shark Jaw	: 1 x Triplex H350, 300 tons SWL
Guide Pin	: 1 x Triplex S200, 200 tons SWL
Capstans	: 2 x Electro-hydraulic each 8 tons @0-18m/min.
Stern Roller	: 1 x 300 tons SWL, 5.5m x dia 3m
Chain Lockers	: 2 @5400mm x 3300mm x 8000mm. Capacity 142.56 m ³

FiFi 1 System

Fire Pumps	: Two seawater centrifugal pumps, each capacity of 1500m ³ /hr @ pump speed of 1800RPM
Fire Monitor	: Two dual foam/water monitor each capacity of 1200 m ³ /hr at 11.5 bars



PRINCIPAL DIMENSIONS
 LENGTH O.A. (MLD - HULL) 75.00M
 LENGTH PERPENDICULAR 66.60M
 BREADTH MLD 18.00M
 DEPTH MLD 8.00M
 DESIGN DRAFT 6.00M
 SPEED 14 KNOTS
 BOLLARD PULL 4X3350 BHP
 MAIN ENGINE POWER @ 750 RPM
 COMPLEMENT 36 MEN
 H.F.O. (CST 180) ABT. 2350 M³
 FRESH WATER ABT. 200 M³
 M.D.O. ABT. 400 M³
 FOAM ABT. 10 M³
 DISPERSANT ABT. 10 M³



ITEM	DESCRIPTION	REV.	DATE
7	RE-DESIGN FITTED	U1	22/10/09
6	UNLIMITED AS PER VARIOUS COMMENTS	MOV	08/10/09
5	AMENDED AS PER DESIGN PROGRESS	COO	08/09/09
4	ORIGINAL TERN DECK DECK	SA	17/01/08
3	UNLIMITED AS PER DESIGN PROGRESS	SA	22/08/02
2	UNLIMITED AS PER DESIGN PROGRESS	SA	15/08/02
1	UNLIMITED AS PER DESIGN PROGRESS	SA	24/07/02

PROJECT: 75M SALVAGE TOWING TUG
 TITLE: GENERAL ARRANGEMENT
 DATE: 20/01/02
 SCALE: 1:100
 DRAWN BY: HC HW
 PROJECT NO.: 2336
 CHECKED BY:
 DRAWING NO.: 035/01
 REV. /

OWNER:
 DESIGNER:
 CONTRACT NO.:
 PROJECT NO.:
 DRAWING NO.:
 REV. /

THIS DOCUMENT AND THE APPROPRIATE CONTENTS IS UNCLASSIFIED AND IS NOT FOR RELEASE TO THE PUBLIC. IT IS THE PROPERTY OF THE UNITED STATES GOVERNMENT AND IS LOANED TO YOUR AGENCY. IT IS TO BE RETURNED TO THE OFFICE OF ORIGIN UPON REQUEST.