

POSH TERASEA OFFSHORE PTE LTD

No. 1 Kim Seng Promenade #06-01
Great World City, Singapore 237994
Tel +65 6839 6500 / Fax +65 6264 4190
marketing@poshtersea.com.sg



SALVIGILANT



12,000 BHP/ 150 TBP AHT/ Ocean Towing/ Salvage Tug Call Sign: S6HA7

Principal Particulars

Flag	: Singapore
Year Built	: 2007
Place Built	: Japan
Length Overall	: 68 m
Length B.P.	: 60 m
Breadth Moulded	: 16.4 m
Depth Moulded	: 7.2 m
Design Draft	: 5.2 m
IMO No.	: 9351842
Official No.	: 392061

Classification

ABS + A1 (E) + AMS, "TOWING VESSEL"

Capacities

Gross Tonnage	: 2658 tons
Nett Tonnage	: 797 tons
Deadweight at 6.00 m	: 2804 tons
Heavy Fuel	: 2050 cbm
Diesel Oil	: 200 cbm
Water ballast Tank	: 1000 cbm
Fresh Water	: 185 cbm
Foam	: 13 cbm
Oil Dispersant	: 13 cbm
Free Deck Space	: 350 sqm
Speed at design draft	: 15 knots
Bollard Pull	: 150 tons

Accommodation

One Man Cabin	: 6
Two Men Cabin	: 5
Four Men Cabin	: 5
Total Complement	: 36 men

Machinery & Deck Equipment

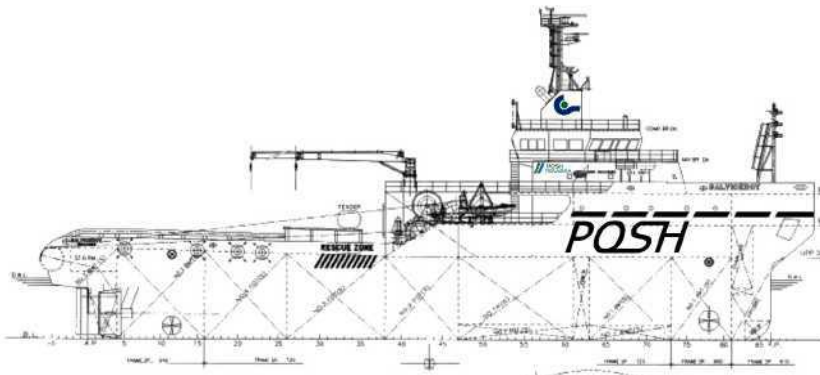
Main Engines	: Wartsila 9L32, 2x4,500 kW @ 750 Rpm
Propellers	: CPP in Nozzles (Lips)
Generators	: 2 x Diesel Main Generator 330 kw each 415v 3 Phase 50 hz 2 x Shaft Generator 1200 kw each 415v 3 Phase 50 hz 1 x Emergency Generator 60 kw 415v 3 Phase 50 hz
Bow Thruster	: 800 kW @ 12 tons thrust
Stern Thruster	: 588 kW @ 9.2 tons thrust
Deck Crane	: 1x hydraulic telescopic crane, 2tons x 14m

Towing/Anchor Handling

Towing Winch	: Hydraulic Waterfall Double Drum Type Brake Holding Capacity @ 400 tons
Towing Wires	: 2x 1500 m x 76 mm Dia towing wires
Recovery Winch/tugger	: 2 x 20 ton electro-hydraulic winches with drum of 400m x 38mm dia
Storage reel	: 1 off 1500 m x 76 mm dia
Shark Jaw	: SWL 350 tons, hydraulic retractable type
Towing pin	: SWL 200 tons, hydraulic retractable type
Capstan	: 2 x 10 tons electro-hydraulic type
Sternroller	: SWL 350 tons 2.5 m x 2000 mm dia
Anchor Windlass	: 2 x rope drums @ 10 ton x 9 m/min

FiFi ½ System

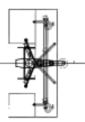
External Fire-fighting	: FiFi ½, 2 x dual foam/water monitor @600cum/hr each.
------------------------	---



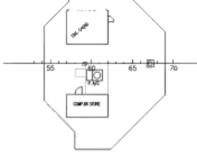
PRINCIPAL PARTICULARS

LENGTH(O.A) APPROX. 58.0m
 LENGTH(B.P) 60.00m
 BREADTH(M.L.D) 14.40m
 DEPTH(M.L.D) 7.20m
 DRAFT (DESIGN) (M.L.D) 5.20m
 DRAUGHT (SCALE) (M.L.D) 6.00m
 CLASS ABS TOWING VESSEL

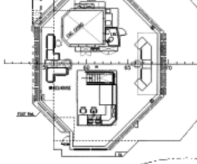
FIR. MONITOR STAGE



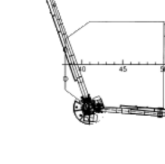
COMP. BR. DECK



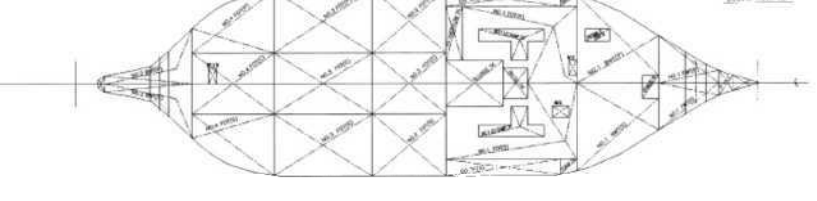
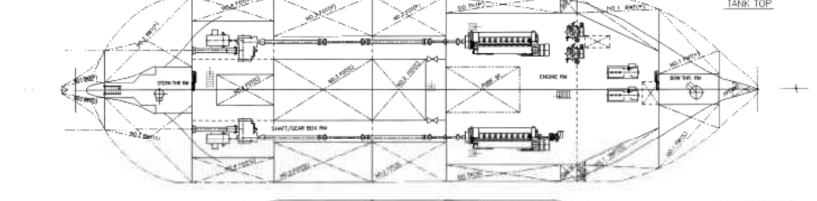
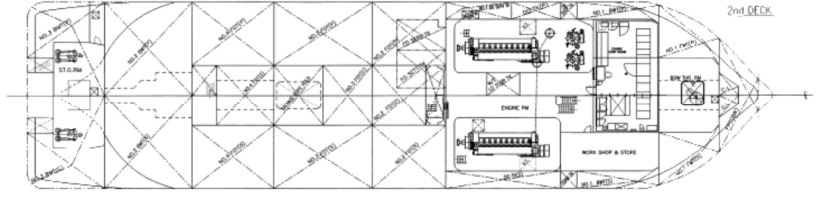
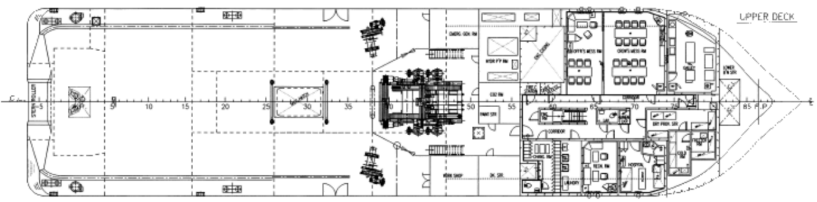
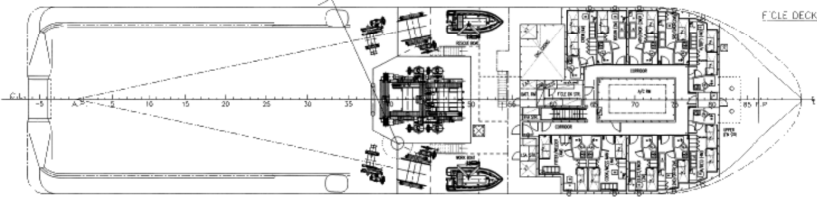
NAV BR. DECK



WINCH SHELTER TOP



BRIDGE DECK



THIS DOCUMENT AND ITS CONTENTS SHALL NOT BE MADE AVAILABLE TO ANY THIRD PARTY WITHOUT WRITTEN PERMISSION FROM POSH TERASEKA PMA LTD

PROJECT NO.	0274
CLIENT	POSH TERASEKA PMA LTD
DESIGN NO.	
DATE	
SCALE	AS SHOWN
PROJECT NO.	0274
CLIENT	POSH TERASEKA PMA LTD
DESIGN NO.	
DATE	
SCALE	AS SHOWN